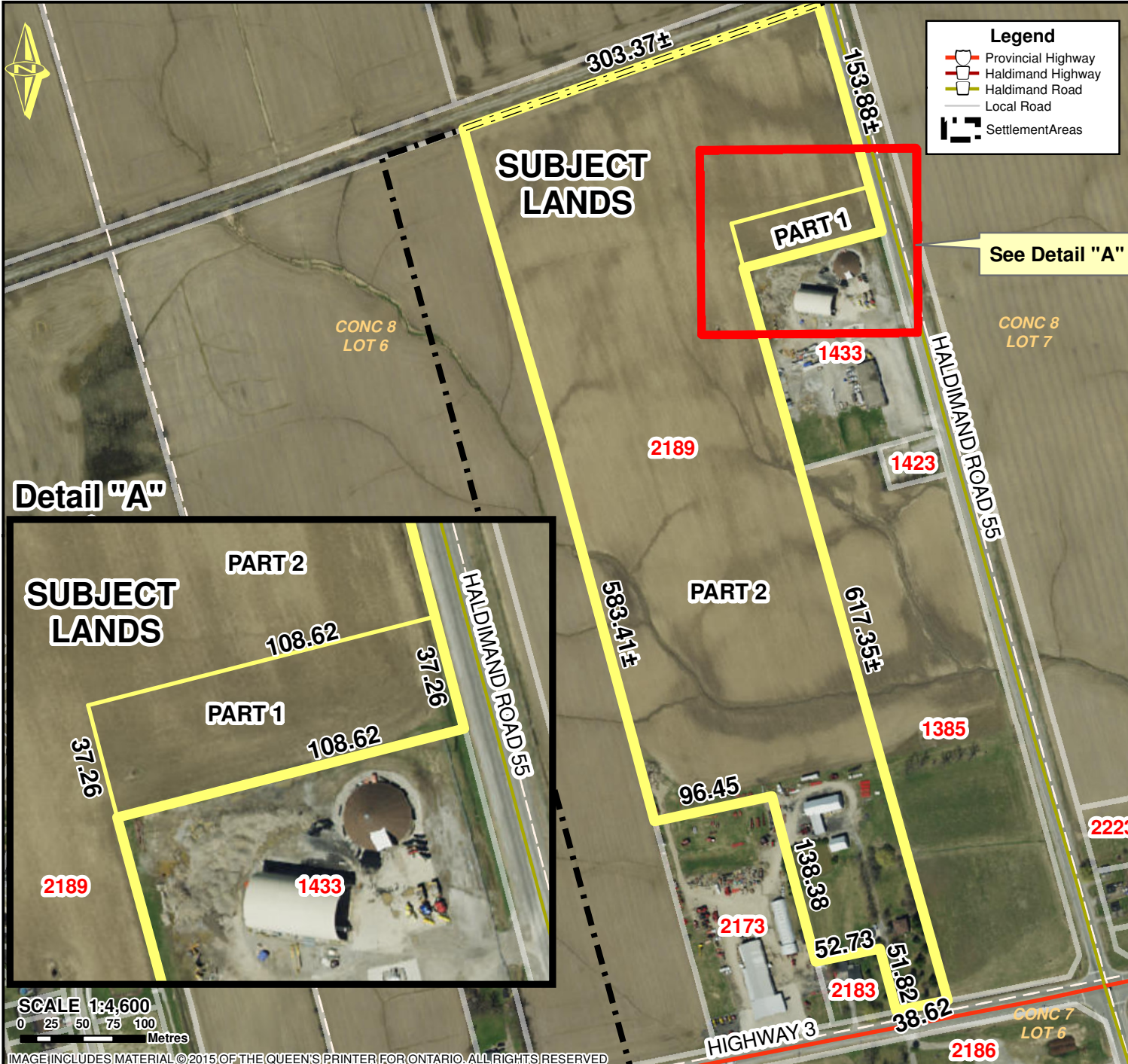


# Location Map FILE # PLZ-HA-2018-040 APPLICANT: Williamson

PED-PD-20-2018, Attachment 1



**Legend**

- Provincial Highway
- Haldimand Highway
- Haldimand Road
- Local Road
- Settlement Areas

Detail "A"



SCALE 1:4,600  
0 25 50 75 100 Metres

IMAGE INCLUDES MATERIAL ©2015 OF THE QUEEN'S PRINTER FOR ONTARIO. ALL RIGHTS RESERVED

**Location:**  
2189 HIGHWAY 3  
GEOGRAPHIC TOWNSHIP OF  
WALPOLE, WARD 1

**Legal Description:**  
WAL CON 8 PT LOT 6

**Property Assessment Number:**  
2810 332 005 01200 0000

**Size:**  
38.02 Acres

**Zoning:**  
A (Agriculture)

HALDIMAND COUNTY, ITS EMPLOYEES, OFFICERS AND AGENTS ARE NOT RESPONSIBLE FOR ANY ERRORS, OMISSIONS OR INACCURACIES WHETHER DUE TO THEIR OWN NEGLIGENCE OR OTHERWISE. DO NOT USE FOR OPERATING MAP OR DESIGN PURPOSES. ALL INFORMATION TO BE VERIFIED.

