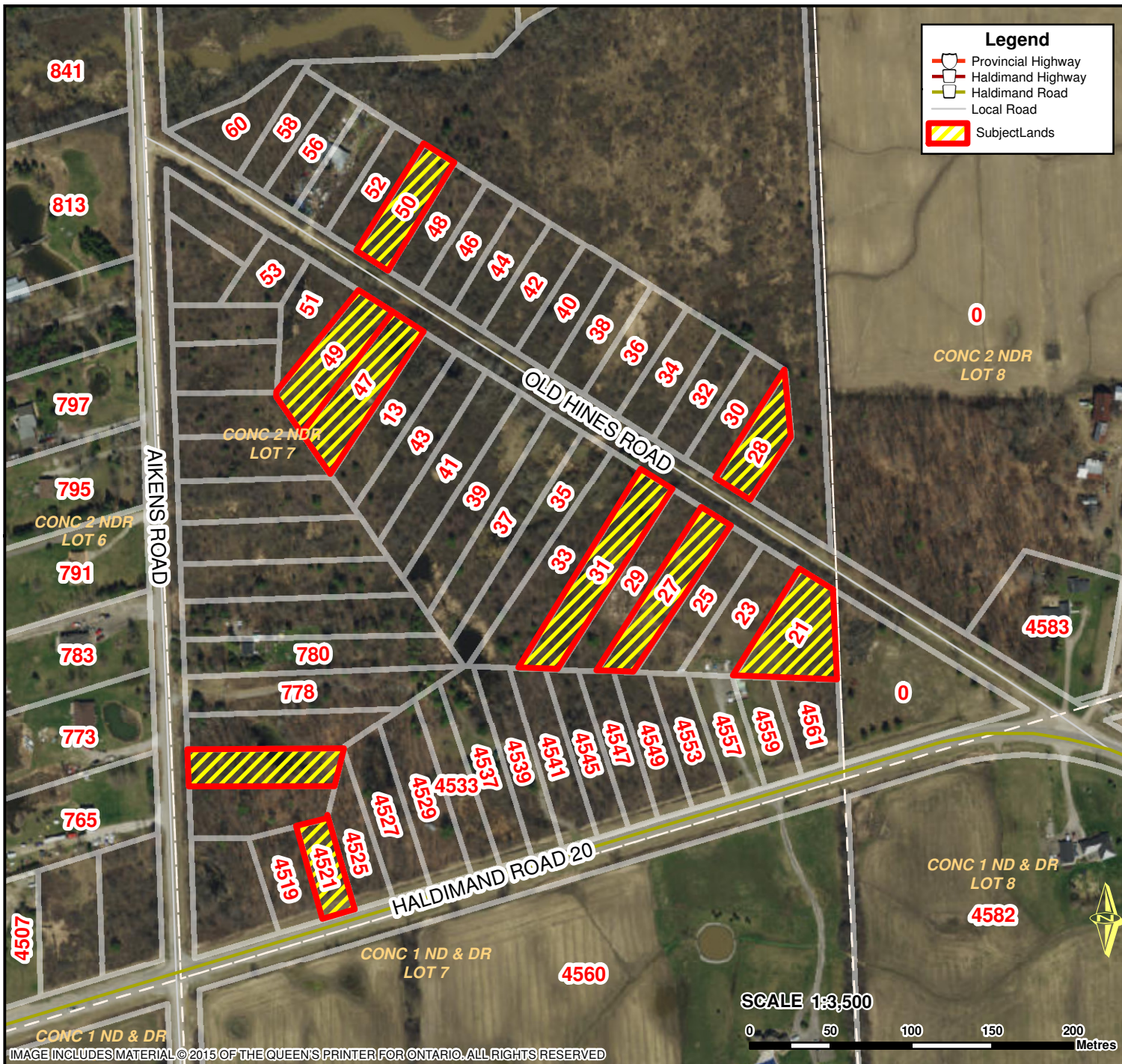


Aikens Road, Old Hines Road and Haldimand Road 20 Area, Dunn



Location Details:

- 21 OLD HINES RD, DUNN, 0,65 ACRES
DUN CON 2 NDR PT LOT 7 RP18R9 PT 20
ROLL # 2810 021 002 11900 0000
- 27 OLD HINES RD, DUNN, 0,68 ACRES
DUN CON 2 NDR PT LOT 7 RP18R9 PT 23
ROLL # 2810 021 002 11600 0000
- 28 OLD HINES RD, DUNN, 0,38ACRES
DUN CON 2 NDR PT LOT 7 RP18R9 PT 18
ROLL # 2810 021 002 13600 0000
- 31 OLD HINES RD, DUNN, 0,86 ACRES
DUN CON 2 NDR PT LOT 7 RP18R9 PT 25
ROLL # 2810 021 002 11400 0000
- 47 OLD HINES RD, DUNN, 0,58 ACRES
DUN CON 2 NDR PT LOT 7 RP18R9 PT 33
ROLL # 2810 021 002 10600 0000
- 49 OLD HINES RD, DUNN, 0,58 ACRES
DUN CON 2 NDR PT LOT 7 RP18R9 PT 34
ROLL # 2810 021 002 10500 0000
- 50 OLD HINES RD, DUNN, 0,43 ACRES
DUN CON 2 NDR PT LOT 7 RP18R9 PT 7
ROLL # 2810 021 002 12500 0000
- 4521 HALDIMAND RD 20, DUNN, 0,35 ACRES
DUN CON 2 NDR PT LOT 7 RP18R9 PT 54
ROLL # 2810 021 002 07300 0000
- 0 AIKENS RD, DUNN, 0,53 ACRES
DUN CON 2 NDR PT LOT 7 RP18R9 PT 50
ROLL # 2810 021 002 08900 0000

Zoning:

A 37.3 (Agriculture)

HALDIMAND COUNTY, ITS EMPLOYEES, OFFICERS AND AGENTS ARE NOT RESPONSIBLE FOR ANY ERRORS, OMISSIONS OR INACCURACIES WHETHER DUE TO THEIR OWN NEGLIGENCE OR OTHERWISE. DO NOT USE FOR OPERATING MAP OR DESIGN PURPOSES. ALL INFORMATION TO BE VERIFIED.

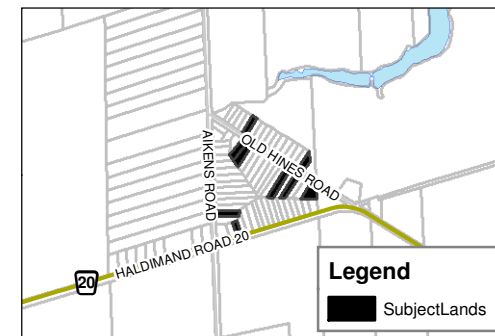


IMAGE INCLUDES MATERIAL © 2015 OF THE QUEEN'S PRINTER FOR ONTARIO. ALL RIGHTS RESERVED