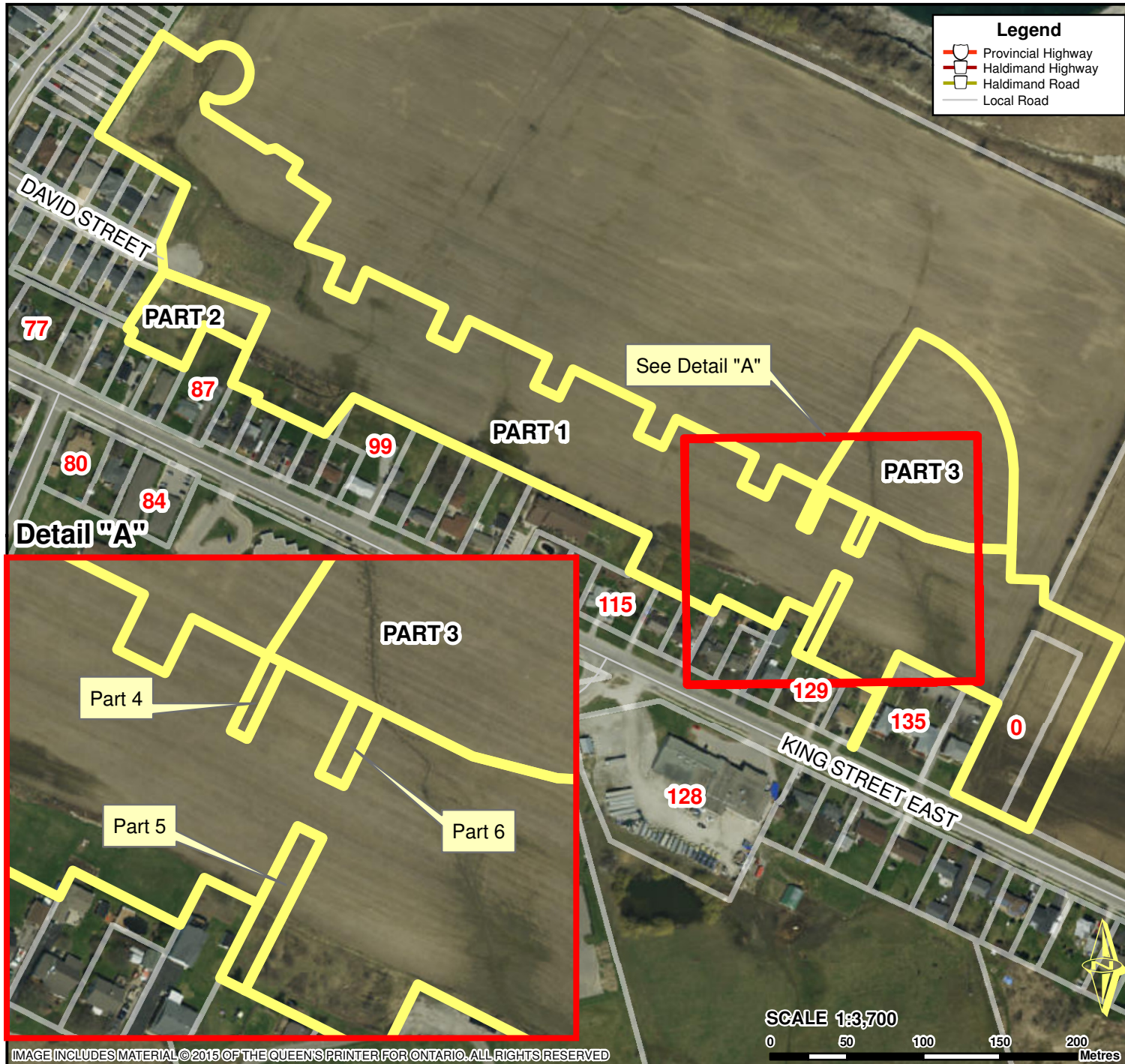


Location Map FILE # PLZ-HA-2017-128 APPLICANT: Garden Communities (Hagersville) Inc.

PED-PD-19-2018, Attachment 1



Location:

**ATHENS STREET
URBAN AREA OF HAGERSVILLE**

Legal Description:

**ONEIDA RANGE EAST PLANK ROAD
PT LOT 30 RCP 73 PT LOT 26
RP 18R5944 PARTS 3 AND 4, PT PART 1
Property Assessment Number:
2810 153 002 00500 0000**

Size:

Approx 20.05 Acres

Zoning:

**D (Development), OS (Open Space),
R1-H (Urban Residential Type 1 - Holding)
R1-B (Urban Residential TypeB)
R2 ((Urban Residential Type 2)**

HALDIMAND COUNTY, ITS EMPLOYEES, OFFICERS AND AGENTS ARE NOT RESPONSIBLE FOR ANY ERRORS, OMISSIONS OR INACCURACIES WHETHER DUE TO THEIR OWN NEGLIGENCE OR OTHERWISE. DO NOT USE FOR OPERATING MAP OR DESIGN PURPOSES. ALL INFORMATION TO BE VERIFIED.

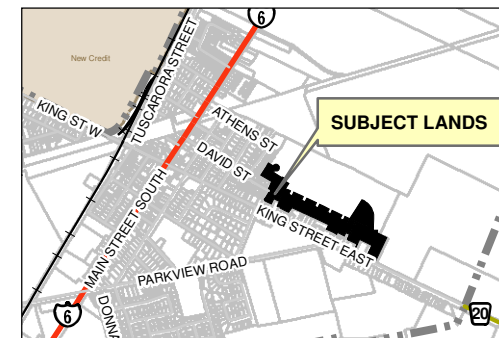


IMAGE INCLUDES MATERIAL ©2015 OF THE QUEEN'S PRINTER FOR ONTARIO. ALL RIGHTS RESERVED

PREPARED BY HALDIMAND COUNTY PLANNING & ECONOMIC DEVELOPMENT DEPARTMENT,
GIS & GRAPHICS SECTION. Apr 2018

T:\Planning and Economic Development\PD\GIS\Applications\2017\PL28\PL28T2017\129-PLZHA2017128\RevisedPLZHA2017128\PLZHA2017128LocMapRevised.mxd