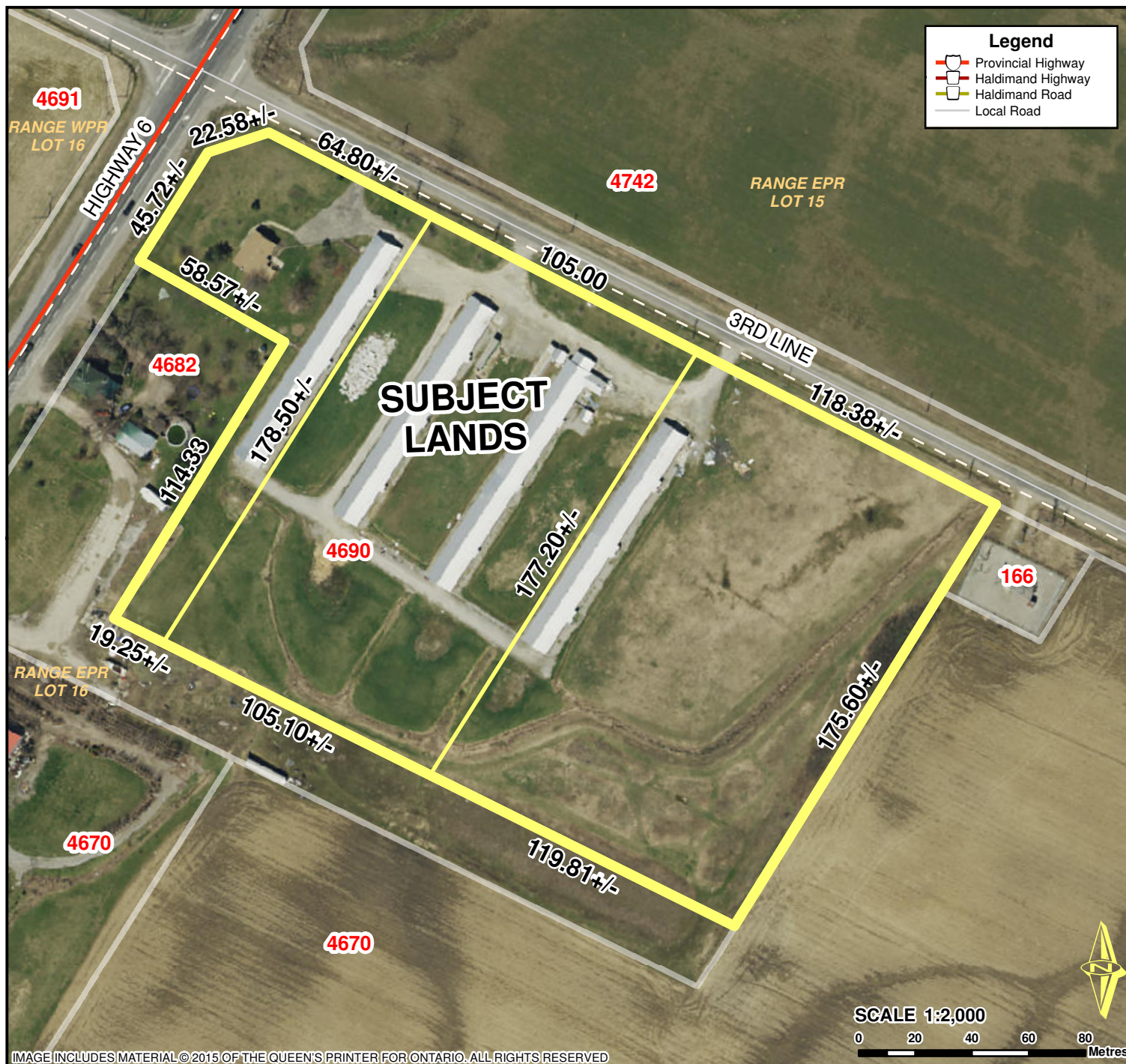


Location Map FILE # PLOP-HA-2017-137 & PLZ-HA-2017-138

APPLICANT: Putt & Zen Construction Inc.

PED-PD-13-2018, Attachment 1



Location:

**4690 HIGHWAY 6
GEOGRAPHIC TOWNSHIP OF ONEIDA**

Legal Description:

OND RANGE EPR PT LOT 16

Property Assessment Number:

2810 153 002 04600 0000

Size:

11 Acres

Zoning:

A (Agriculture)

HALDIMAND COUNTY, ITS EMPLOYEES, OFFICERS AND AGENTS ARE NOT RESPONSIBLE FOR ANY ERRORS, OMISSIONS OR INACCURACIES WHETHER DUE TO THEIR OWN NEGLIGENCE OR OTHERWISE. DO NOT USE FOR OPERATING MAP OR DESIGN PURPOSES. ALL INFORMATION TO BE VERIFIED.

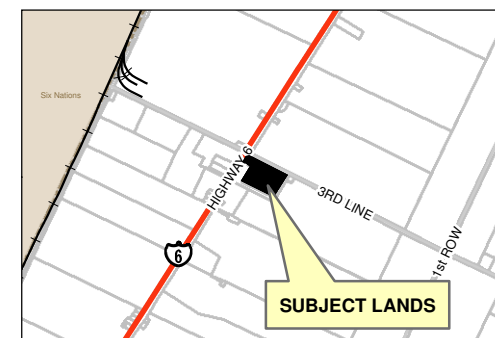


IMAGE INCLUDES MATERIAL © 2015 OF THE QUEEN'S PRINTER FOR ONTARIO. ALL RIGHTS RESERVED

PREPARED BY HALDIMAND COUNTY PLANNING & ECONOMIC DEVELOPMENT DEPARTMENT,
GIS & GRAPHICS SECTION. Oct 2017

T:\Planning and Economic Development\PD\GIS\Applications\2017\PLOP\LOPHA2017137-PLZHA2017138\LOPHA2017137-PLZHA2017138LocMap.mxd