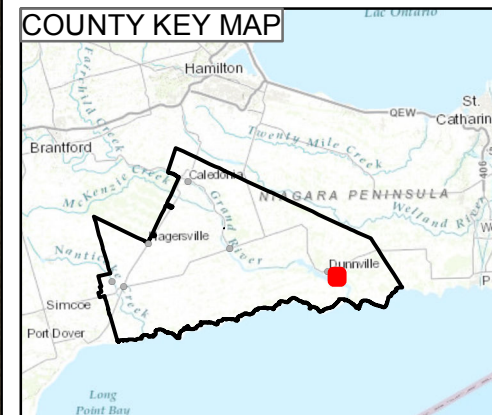
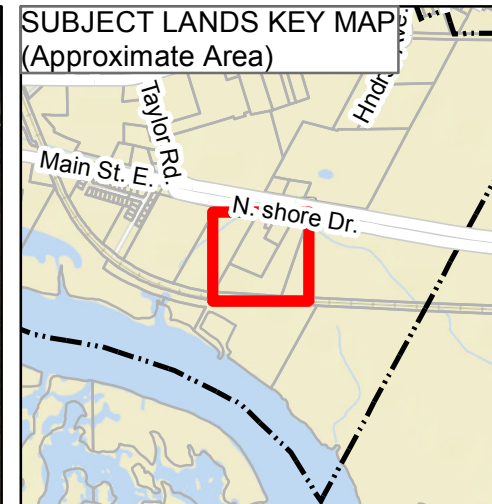


HALDIMAND COUNTY LOCATION MAP

PED-EDT-02-2018, Attachment 1



Service Layer Credits: Sources: Esri, HERE, DeLorme, Intermap, increment P Corp., GEBCO, USGS, FAO, NPS, NRCAN, GeoBase, IGN, Kadaster NL, Ordnance Survey, Esri Japan, METI, Esri China (Hong Kong), swisstopo,

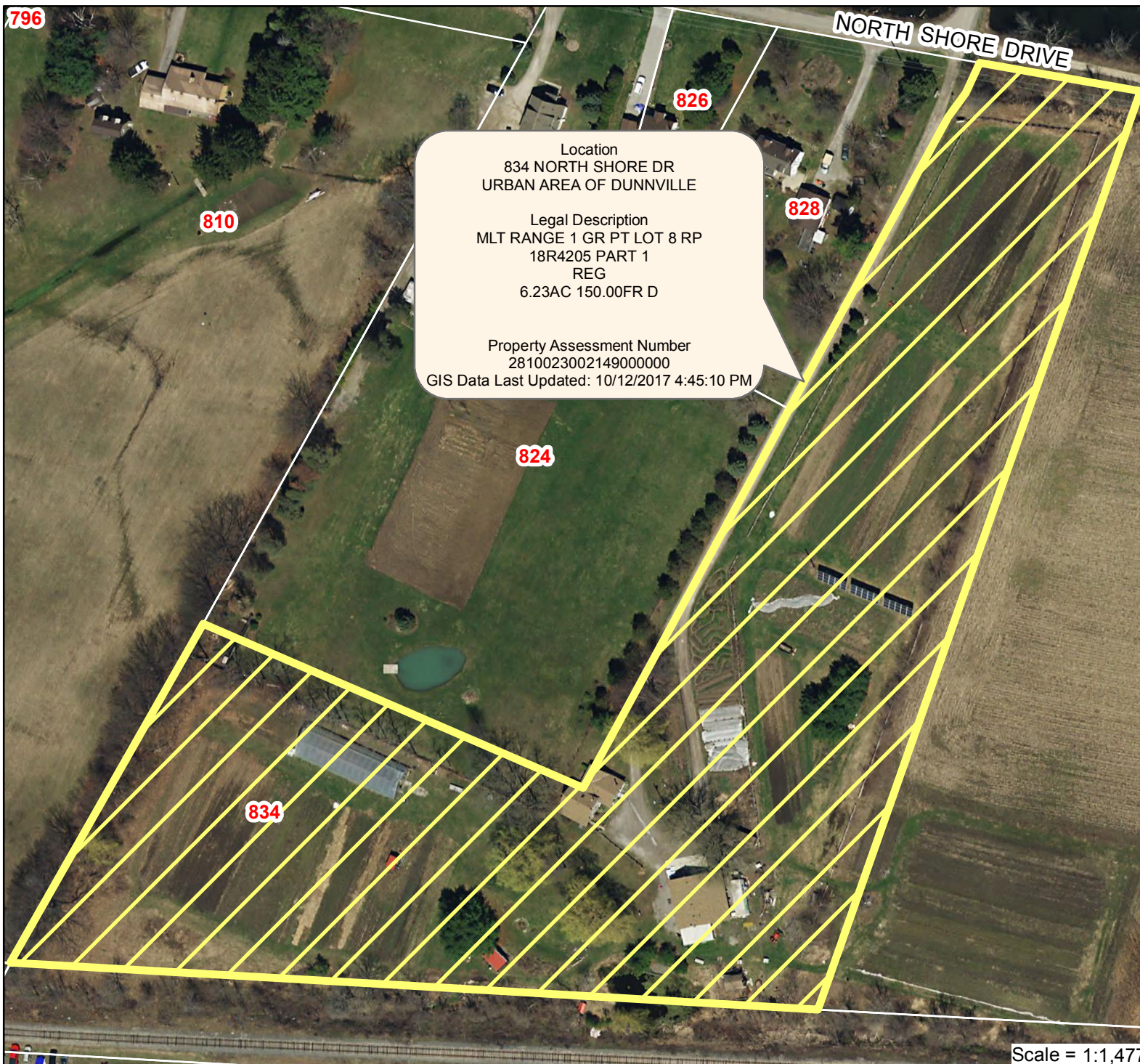


LEGAL DESCRIPTION FRONTAGE AND DEPTH ARE MEASURED IN FEET.

HALDIMAND COUNTY, ITS EMPLOYEES, OFFICERS AND AGENTS ARE NOT RESPONSIBLE FOR ANY ERRORS, OMISSIONS OR INACCURACIES WHETHER DUE TO THEIR OWN NEGLIGENCE OR OTHERWISE. DO NOT USE FOR OPERATING MAP OR DESIGN PURPOSES.

ALL INFORMATION TO BE VERIFIED.
IMAGE INCLUDES MATERIAL © 2015 OF
THE QUEEN'S PRINTER FOR ONTARIO. ALL RIGHTS RESERVED

Printed On: 2/23/2018 3:19:31 PM



Location
834 NORTH SHORE DR
URBAN AREA OF DUNNVILLE

Legal Description
MLT RANGE 1 GR PT LOT 8 RP
18R4205 PART 1
REG
6.23AC 150.00FR D

Property Assessment Number
2810023002149000000
GIS Data Last Updated: 10/12/2017 4:45:10 PM

Scale = 1:1,477