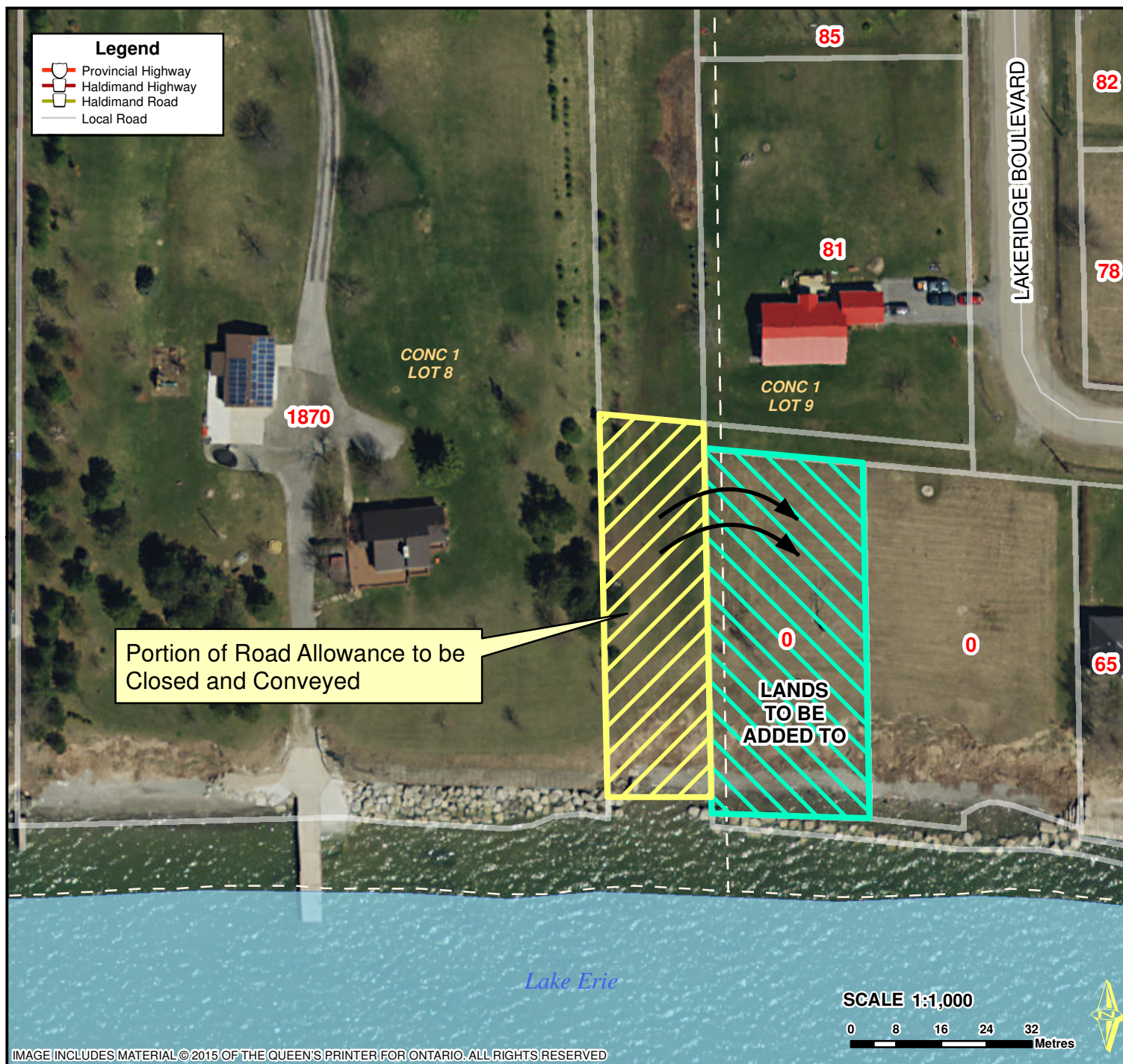


Road Closure and Conveyance of Road Allowance in Lowbanks



Location:

ROAD ALLOWANCE BETWEEN LOTS 8 & 9, CONCESSION 1 GEOGRAPHIC TOWNSHIP OF SHERBROOKE

HALDIMAND COUNTY, ITS EMPLOYEES, OFFICERS AND AGENTS ARE NOT RESPONSIBLE FOR ANY ERRORS, OMISSIONS OR INACCURACIES WHETHER DUE TO THEIR OWN NEGLIGENCE OR OTHERWISE. DO NOT USE FOR OPERATING MAP OR DESIGN PURPOSES. ALL INFORMATION TO BE VERIFIED.

