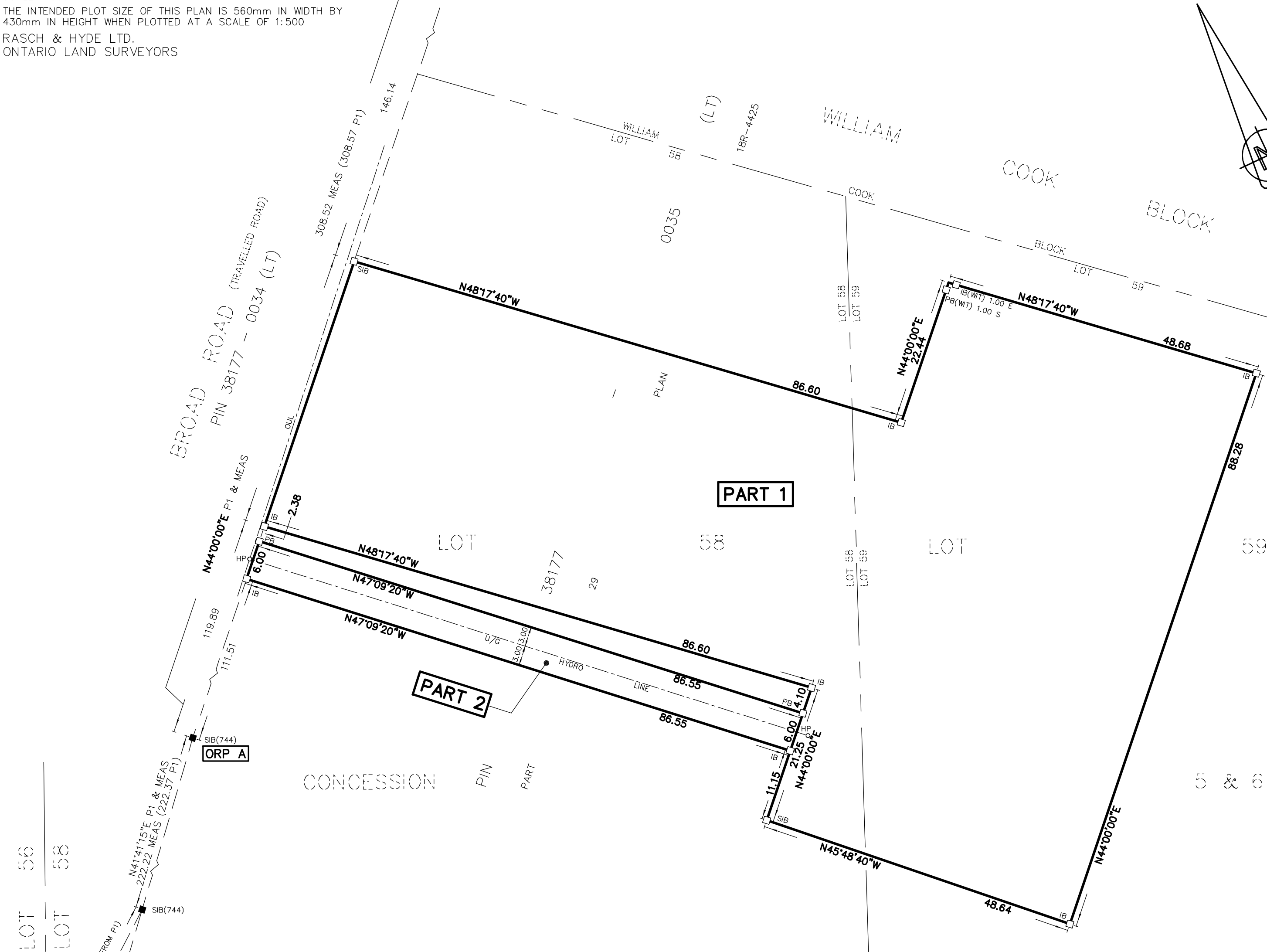


PLAN OF SURVEY OF
PART OF LOTS 58 AND 59
CONCESSION 5 & 6
GEOGRAPHIC TOWNSHIP OF ONEIDA
HALDIMAND COUNTY

0 10 20 30 40 50m
SCALE 1:500
THE INTENDED PLOT SIZE OF THIS PLAN IS 560mm IN WIDTH BY 430mm IN HEIGHT WHEN PLOTTED AT A SCALE OF 1:500
RASCH & HYDE LTD.
ONTARIO LAND SURVEYORS

SCHEDULE				
PART	LOT	CONCESSION	PIN	AREA
1	PART OF LOTS 58 AND 59	CONCESSION 5 & 6	PART OF 38177-0035 (LT)	0.7919 Ha.
2	PART OF LOT 58			519.2 s.m.

0 10 20 30 40 50m
SCALE 1:500
THE INTENDED PLOT SIZE OF THIS PLAN IS 560mm IN WIDTH BY 430mm IN HEIGHT WHEN PLOTTED AT A SCALE OF 1:500
RASCH & HYDE LTD.
ONTARIO LAND SURVEYORS



METRIC NOTE

DISTANCES and COORDINATES SHOWN ON THIS PLAN ARE IN METRES AND CAN BE CONVERTED TO FEET BY DIVIDING BY 0.3048

LEGEND

- DENOTES SURVEY MONUMENT PLANTED
- DENOTES SURVEY MONUMENT FOUND
- SIB DENOTES STANDARD IRON BAR (25mmX25mmX120cm)
- SSIB DENOTES SHORT STANDARD IRON BAR (25mmX25mmX60cm)
- IB DENOTES IRON BAR (15mmX15mmX60cm)
- IBØ DENOTES ROUND IRON BAR (20mm DIA X 60cm)
- CC DENOTES CUT CROSS
- CM DENOTES CONCRETE MONUMENT
- PB DENOTES PLASTIC BAR
- WIT DENOTES WITNESS
- OU DENOTES ORIGIN UNKNOWN
- PIN DENOTES PROPERTY IDENTIFIER NUMBER
- ORP DENOTES OBSERVED REFERENCE POINT
- (744) DENOTES MATTHEWS & CAMERON O.L.S.
- (1416) DENOTES WEST & RUUSKA O.L.S.
- P1 DENOTES PLAN 18R-4425
- HP DENOTES HYDRO/UTILITY POLE
- OUL DENOTES OVERHEAD HYDRO/UTILITY POLE LINE
- N=NORTH, S=SOUTH, E=EAST, W=WEST

SURVEYOR'S CERTIFICATE

- I CERTIFY THAT :
- THIS SURVEY AND PLAN ARE CORRECT AND IN ACCORDANCE WITH THE SURVEYS ACT, THE SURVEYORS ACT AND THE LAND TITLES ACT AND THE REGULATIONS MADE UNDER THEM.
 - THIS SURVEY WAS COMPLETED ON THE 8th DAY OF JULY 2025.

JULY 14, 2025
DATE
HAROLD D. HYDE
ONTARIO LAND SURVEYOR

THIS PLAN OF SURVEY RELATES TO A.O.L.S. PLAN SUBMISSION FORM V-104813

RASCH + HYDE LTD.
Ontario Land Surveyors

P.O. Box 6, 1333 Highway #3 East, Unit B
DUNNVILLE, ONT, N1A 2X1
DUNNVILLE: 905-774-7188 FORT ERIE: 905-871-9757
(FAX 905-774-4000)

HAROLD D. HYDE O.L.S.

SCALE 1 : 500 SURVEY : 24-290 DRWN BY : T. Matheson

INTEGRATION DATA

POINT ID	NORTHING	EASTING
ORP A SIB(744)	4761002.03	589267.07
ORP B SIB(1416)	4761223.89	589481.32

ALL COORDINATES ARE IN METRES AND ARE UTM-ZONE 17, (NAD 83-CSRS: CBNV6 (Epoch 2010.0)) (CENTRAL MERIDIAN 81° WEST LONGITUDE).

COORDINATE VALUES ARE TO AN URBAN ACCURACY IN ACCORDANCE WITH SECTION 14 (2) OF O. REG 216/10.

CAUTION

COORDINATES CANNOT, IN THEMSELVES, BE USED TO RE-ESTABLISH CORNERS OR BOUNDARIES SHOWN ON THIS PLAN.

DISTANCES ARE ADJUSTED GROUND DISTANCES AND CAN BE CONVERTED TO GRID DISTANCES BY MULTIPLYING BY THE AVERAGE COMBINED SCALE FACTOR (CSF = 0.99968293)

BEARING NOTE

BEARINGS HEREON ARE GRID, UTM ZONE 17, (NAD 83-CSRS : CBNV6 (Epoch 2010.0)) DERIVED FROM OBSERVED REFERENCE POINTS (ORPs) USING THE CAN-NET VRS NETWORK AND ARE REFERRED TO THE CENTRAL MERIDIAN OF UTM ZONE 17 (81° WEST LONGITUDE)

ROTATION NOTE

FOR COMPARISON PURPOSES, THE ASTRONOMIC BEARINGS SHOWN ON P1 HAVE BEEN ROTATED 00°44'45" COUNTER-CLOCKWISE.