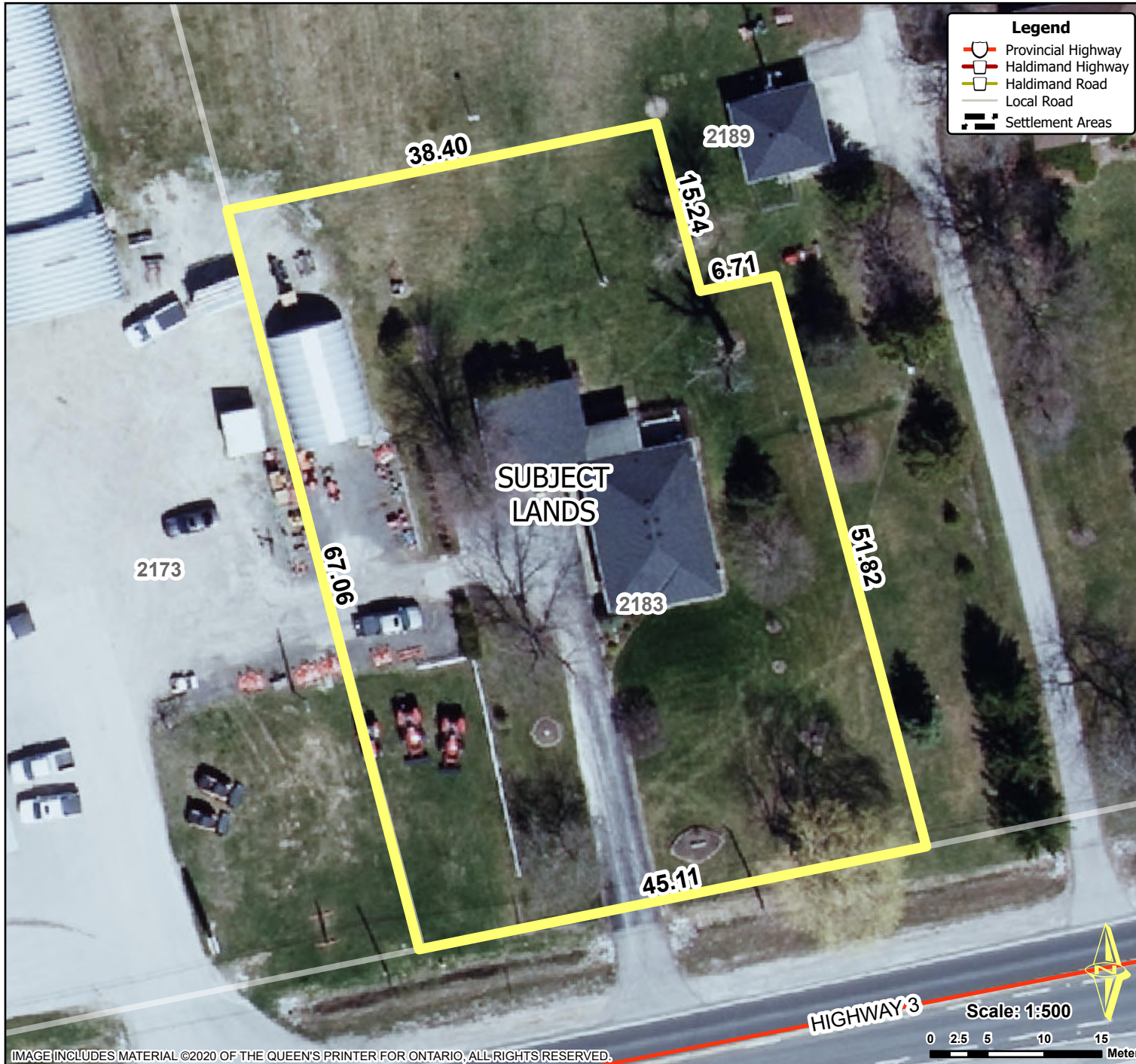


# Location Map FILE #PLRU-2025-085 APPLICANT: Williamson

PDD-15-2025, Attachment 1



## Location:

**2183 HIGHWAY 3  
GEOGRAPHIC TOWNSHIP OF WALPOLE  
WARD 1**

## Legal Description:

**WALPOLE CON 8 PT LOT 6 RP  
18R8239 PARTS 1 AND 3**

## Property Assessment Number:

**2810 332 005 01100 0000**

## Size:

**0.29 Hectares (0.72 Acres)**

## Zoning:

**A (Agriculture)**

HALDIMAND COUNTY, ITS EMPLOYEES, OFFICERS AND AGENTS ARE NOT RESPONSIBLE FOR ANY ERRORS, OMISSIONS OR INACCURACIES WHETHER DUE TO THEIR OWN NEGLIGENCE OR OTHERWISE. DO NOT USE FOR OPERATING MAP OR DESIGN PURPOSES. ALL INFORMATION TO BE VERIFIED.

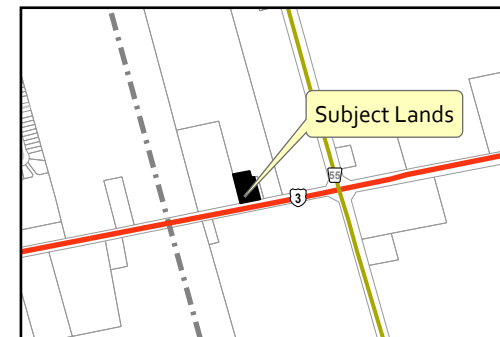


IMAGE INCLUDES MATERIAL ©2020 OF THE QUEEN'S PRINTER FOR ONTARIO, ALL RIGHTS RESERVED.