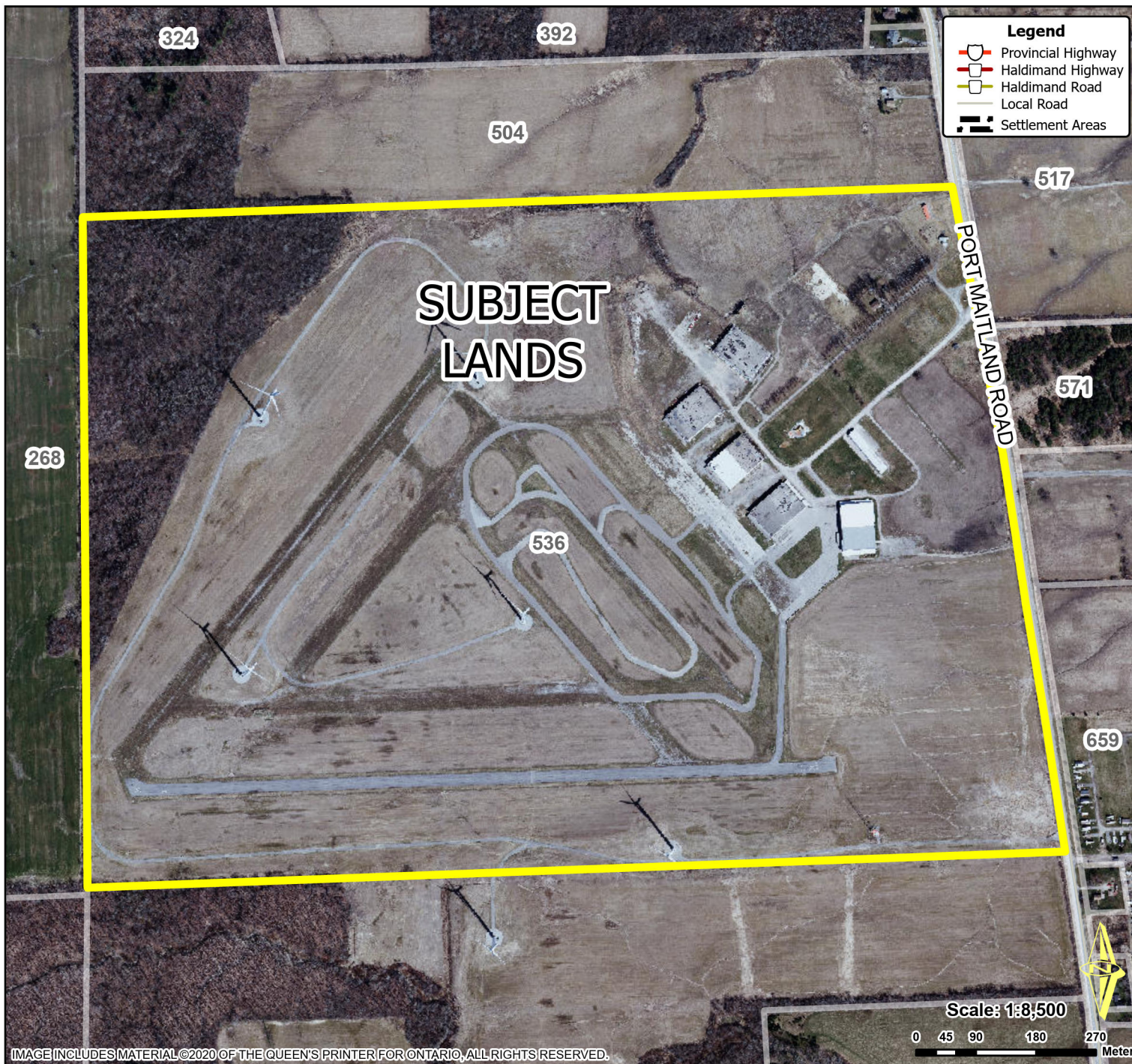


Location Map FILE #PLRU-2025-052 APPLICANT: 1736032 Ontario Inc.

PDD-11-2025, Attachment 1



Location:

536 PORT MAITLAND ROAD
GEOGRAPHIC TOWNSHIP OF DUNN
WARD 5

Legal Description:

DUN TCT SHEEHAN PT LOTS 3-7 RP
18R2000 PART OF PART 1

Property Assessment Number:

2810 021 003 21200 0000

Size:

139.57 Hectares (344.9 Acres)

Zoning:

A(H) (Agricultural - Holding),
ML(H) (Light Industrial - Holding),
MNR (Unevaluated Lands),
GRCA (Wetland),
GRCA (Regulated Lands),

HALDIMAND COUNTY, ITS EMPLOYEES, OFFICERS AND AGENTS ARE NOT RESPONSIBLE FOR ANY ERRORS, OMISSIONS OR INACCURACIES WHETHER DUE TO THEIR OWN NEGLIGENCE OR OTHERWISE. DO NOT USE FOR OPERATING MAP OR DESIGN PURPOSES. ALL INFORMATION TO BE VERIFIED.

