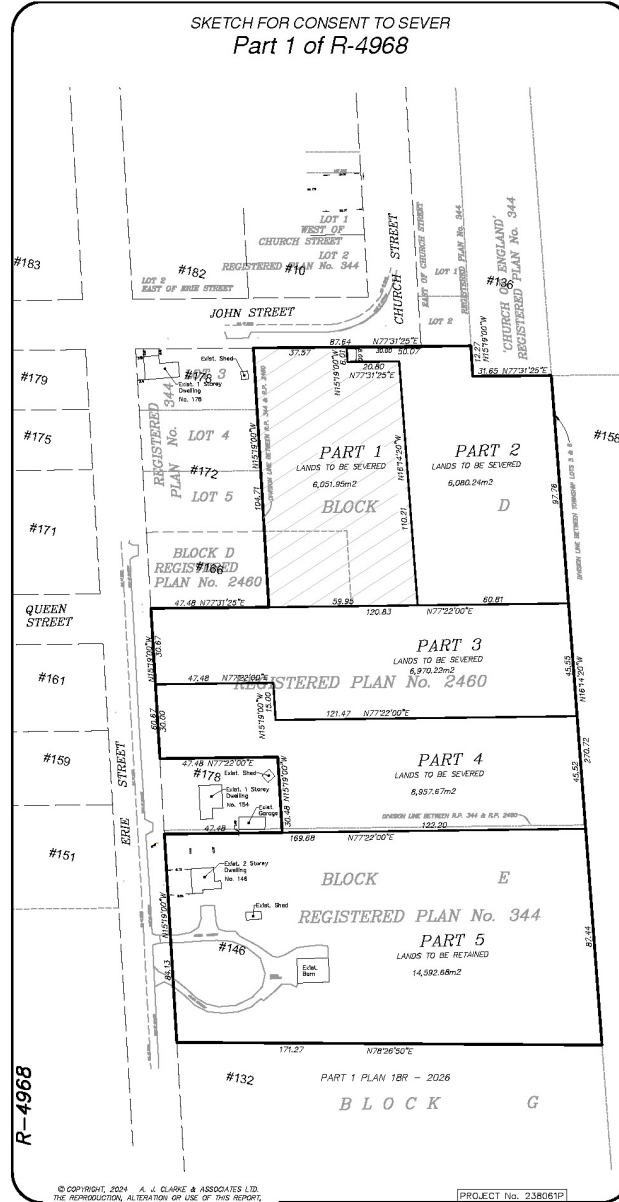
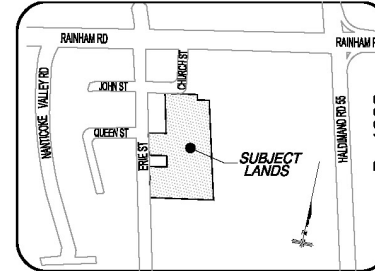


Owner's Sketch 3 of 3 FILE #PLZ-HA-2024-186 APPLICANT: Jamieson & Monahan



© COPYRIGHT, 2024 A. J. CLARKE & ASSOCIATES LTD.
 THE REPRODUCTION, ALTERATION OR USE OF THIS REPORT,
 IN WHOLE OR IN PART, WITHOUT THE EXPRESS PERMISSION OF
 A. J. CLARKE & ASSOCIATES LTD. IS STRICTLY PROHIBITED.
 PROJECT No. 238061P



THE ABOVE NOTED LANDS ARE
 PART OF BLOCK D, REGISTERED PLAN 2460 AND
 PART OF BLOCK E, REGISTERED PLAN 344
 COUNTY OF HALDIMAND

METRIC:
 DISTANCES SHOWN ON THIS PLAN ARE IN METRES AND
 CAN BE CONVERTED TO FEET BY DIVIDING BY 0.3048.

NOTE:
 THE BOUNDARIES AND MEASUREMENTS SHOWN ON THIS SKETCH
 ARE BASED ON A PLAN OF SURVEY BY OUR OFFICE DATED APRIL
 12, 2024 (INDEX No. T-3573).

THIS SKETCH IS NOT VALID UNLESS IT IS
 AN EMBOSSED ORIGINAL COPY OR CERTIFIED
 DIGITAL COPY ISSUED BY THE SURVEYOR.

THIS SKETCH IS PREPARED TO ACCOMPANY AN APPLICATION
 TO THE LAND DIVISION COMMITTEE REQUESTING A GRANT
 OF SEVERANCE AND IS NOT INTENDED FOR REGISTRATION.

CONSENT SCHEDULE:

PART 1 (LANDS TO BE SEVERED)	AREA = 6,051.95m ²
PART 2 (LANDS TO BE SEVERED)	AREA = 6,080.24m ²
PART 3 (LANDS TO BE SEVERED)	AREA = 6,970.22m ²
PART 4 (LANDS TO BE SEVERED)	AREA = 6,957.67m ²
PART 5 (LANDS TO BE RETAINED)	AREA = 14,592.68m ²

CAUTION:
 THIS IS NOT A PLAN OF SUBDIVISION AND SHALL NOT BE
 USED FOR TRANSACTION OR MORTGAGE PURPOSES.

OCTOBER 28, 2024
 DATE
 NICHOLAS P. MUTH
 ONTARIO LAND SURVEYOR

A. J. Clarke and Associates Ltd.
 SURVEYORS • PLANNERS • ENGINEERS
 25 MAIN STREET WEST, SUITE 300
 HAMILTON, ONTARIO, L8P 1H1
 TEL. 905-528-8761 FAX 905-528-2289
 email: ajc@ajclarke.com

H:\1\18\2460\BlockD\146 Erie Street (238061P)\Current Work\SEVERANCE SKETCH.dwg