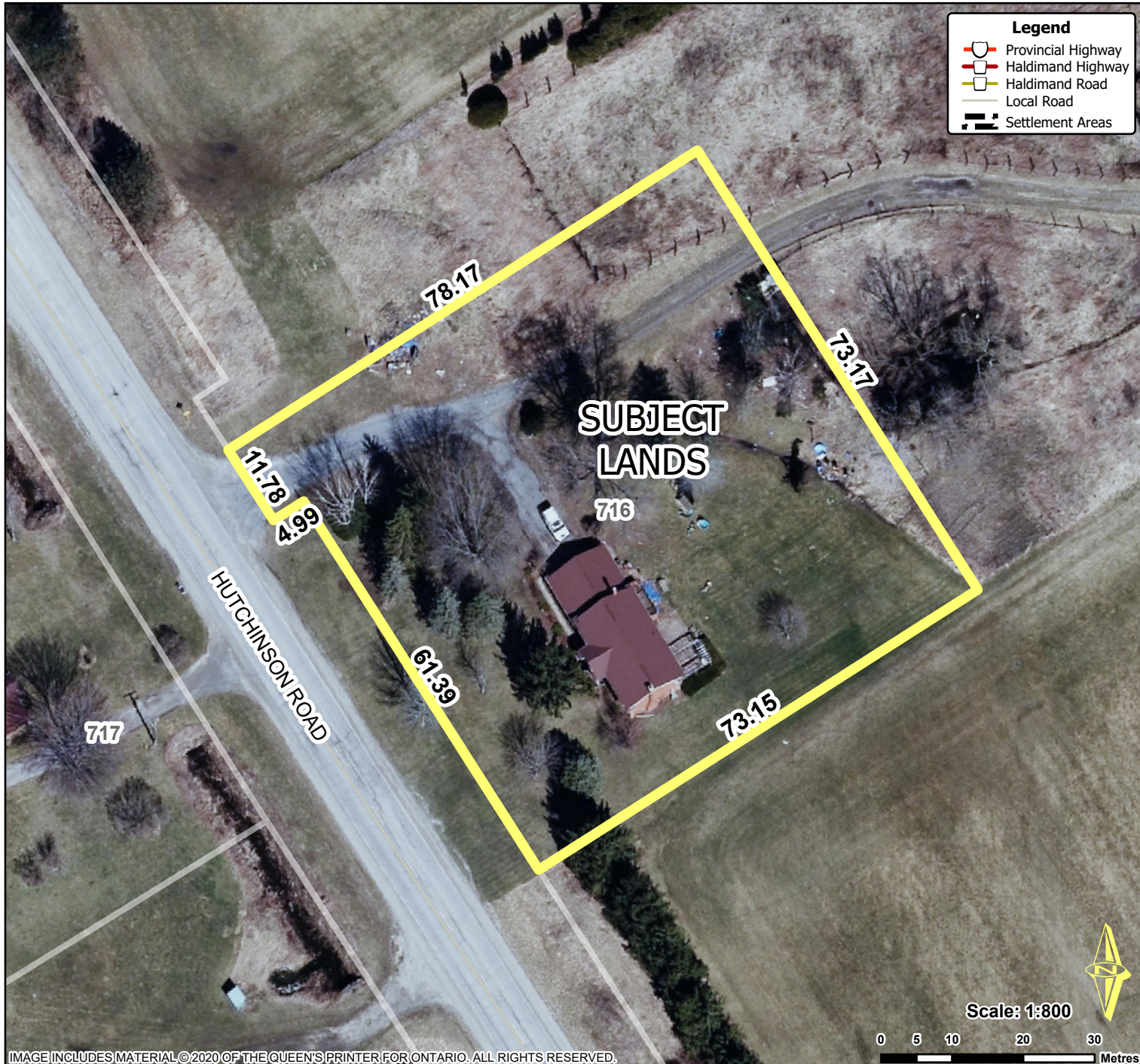


Location Map FILE #PLA-2024-211 APPLICANT: Vis



Legend

- Provincial Highway
- Haldimand Highway
- Haldimand Road
- Local Road
- Settlement Areas

Location:
716 HUTCHINSON ROAD
GEOGRAPHIC TOWNSHIP OF MOULTON
WARD 5

Legal Description:
MOULTON CON 3 LE PT LOT 8 RP 18R8061
PART 1

Property Assessment Number:
2810 023 004 13302 0000

Size:
0.542 Hectares

Zoning:
A (Agriculture)

HALDIMAND COUNTY, ITS EMPLOYEES, OFFICERS AND AGENTS ARE NOT RESPONSIBLE FOR ANY ERRORS, OMISSIONS OR INACCURACIES WHETHER DUE TO THEIR OWN NEGLIGENCE OR OTHERWISE. DO NOT USE FOR OPERATING MAP OR DESIGN PURPOSES. ALL INFORMATION TO BE VERIFIED.

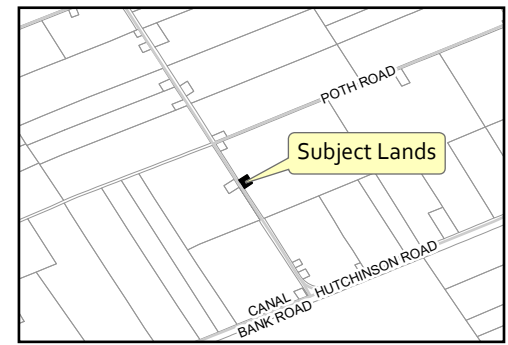


IMAGE INCLUDES MATERIAL © 2020 OF THE QUEEN'S PRINTER FOR ONTARIO. ALL RIGHTS RESERVED.