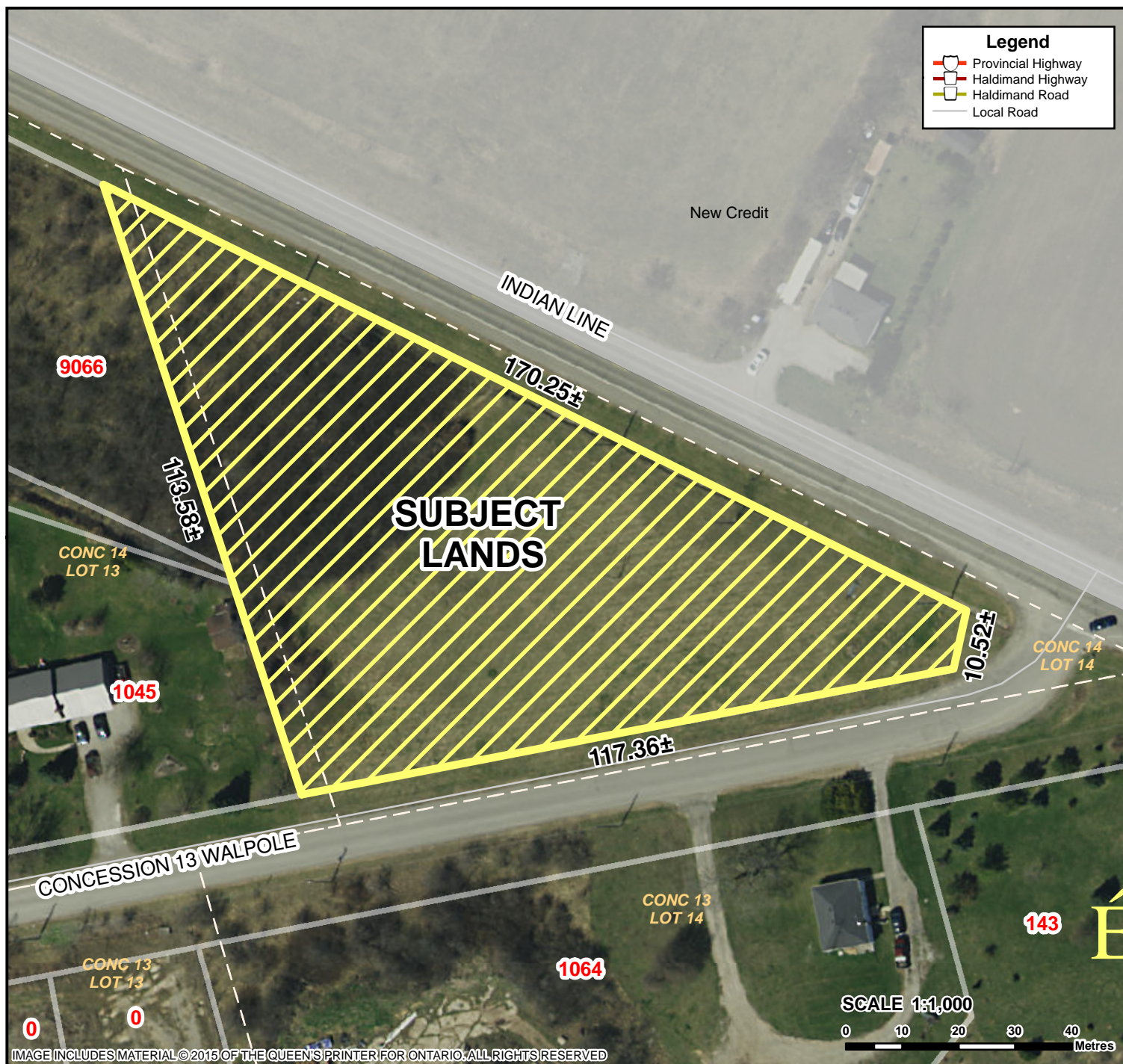


Concession 13 Walpole & Haldimand Road 20, Hagersville



Location:

**CORNER OF CONCESSION 13 WALPOLE
& HALDIMAND ROAD 20
GEOGRAPHIC TOWNSHIP OF WALPOLE**

Legal Description:

WAL CON 14 LOT 14

Property Assessment Number:

Unassigned

Size:

Approx 0.75 HECTARES (1.85 acres)

Property Code:

Unassigned

Zoning:

A (Agriculture)

HALDIMAND COUNTY, ITS EMPLOYEES, OFFICERS AND AGENTS ARE NOT RESPONSIBLE FOR ANY ERRORS, OMISSIONS OR INACCURACIES WHETHER DUE TO THEIR OWN NEGLIGENCE OR OTHERWISE. DO NOT USE FOR OPERATING MAP OR DESIGN PURPOSES. ALL INFORMATION TO BE VERIFIED.

