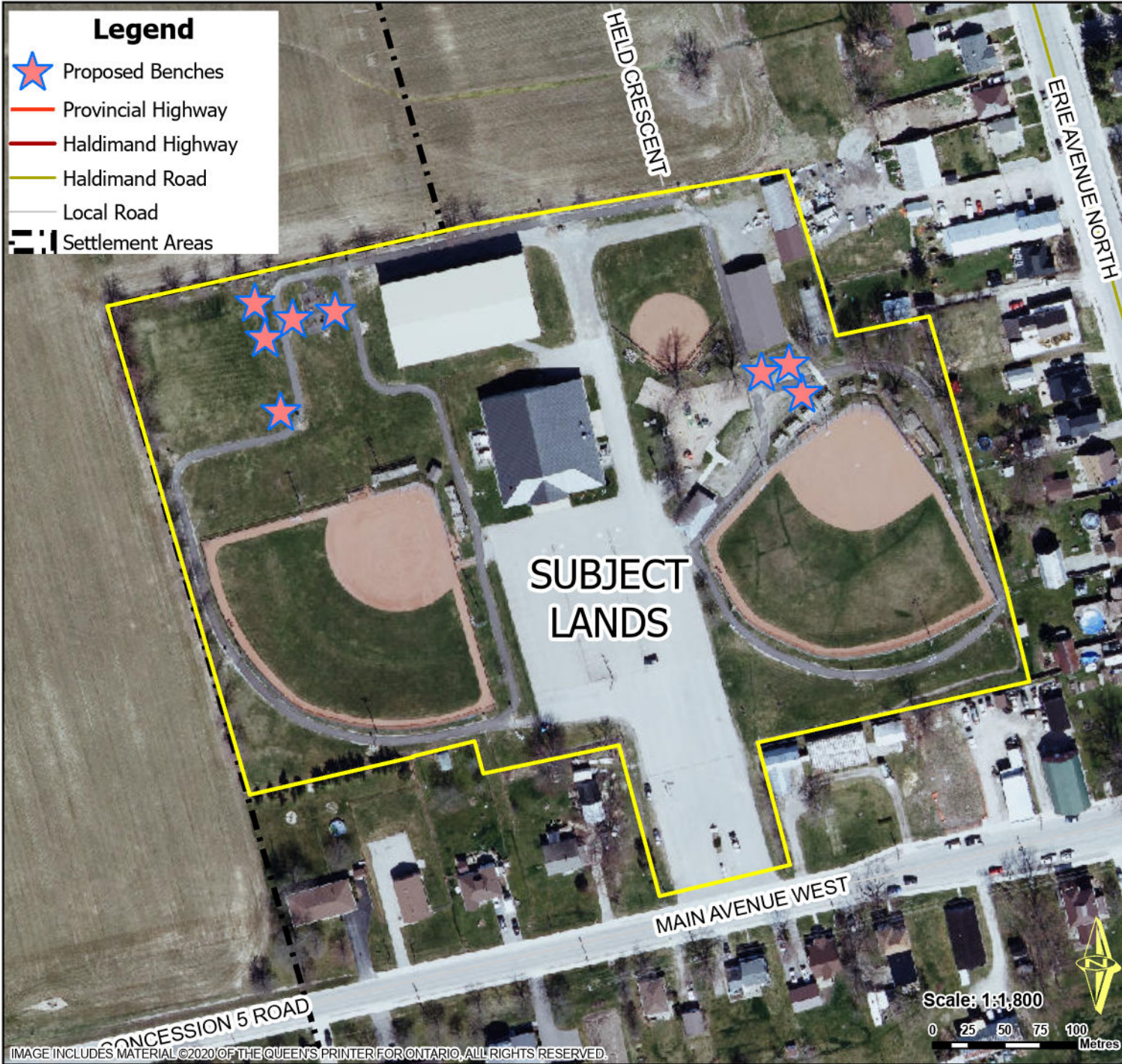


# Location Map: Fisherville Park



- Legend**
- Proposed Benches
  - Provincial Highway
  - Haldimand Highway
  - Haldimand Road
  - Local Road
  - Settlement Areas



Location:  
**16-18 MAIN AVENUE WEST**  
**GEOGRAPHIC TOWNSHIP OF RAINHAM**  
**WARD 2**

Legal Description:  
**RAINHAM CON 5 PT LOT 6**  
**AND RP 18R1949 PARTS 1 AND 2**

Property Assessment Number:  
**2810 158 003 10610 0000**

Size:  
**8.52 Acres**

Zoning:  
**IC (Community Institutional)**

HALDIMAND COUNTY, ITS EMPLOYEES, OFFICERS AND AGENTS ARE NOT RESPONSIBLE FOR ANY ERRORS, OMISSIONS OR INACCURACIES WHETHER DUE TO THEIR OWN NEGLIGENCE OR OTHERWISE. DO NOT USE FOR OPERATING MAP OR DESIGN PURPOSES. ALL INFORMATION TO BE VERIFIED.

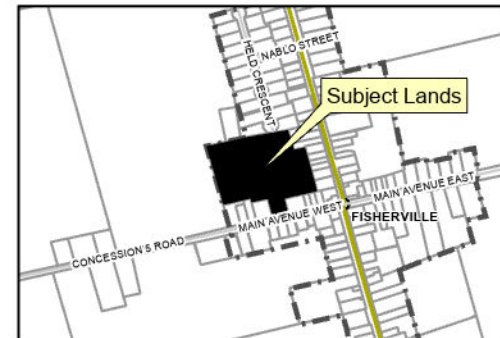


IMAGE INCLUDES MATERIAL ©2020 OF THE QUEEN'S PRINTER FOR ONTARIO. ALL RIGHTS RESERVED.