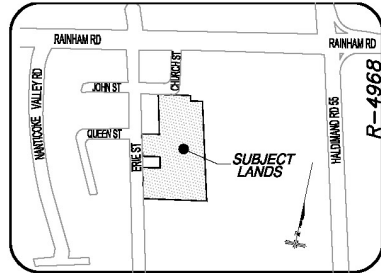
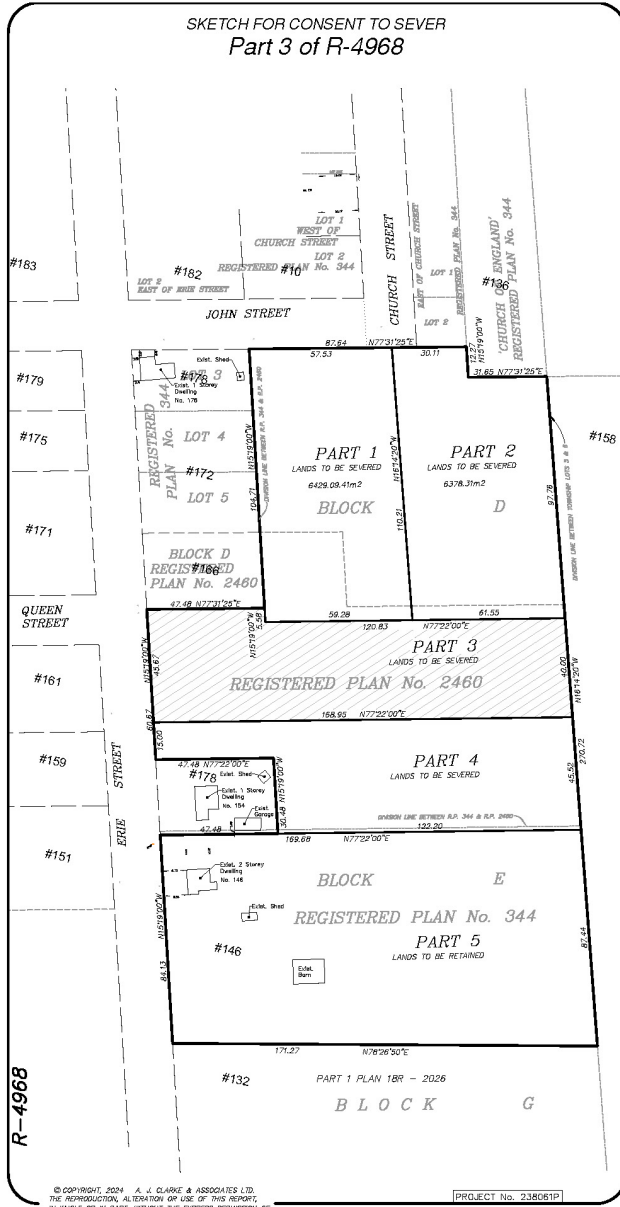


Owner's Sketch FILE #PLB-2024-184 APPLICANT: Jamieson & Monahan



THE ABOVE NOTED LANDS ARE
PART OF BLOCK D, REGISTERED PLAN 2460 AND
PART OF BLOCK E, REGISTERED PLAN 344
COUNTY OF HALDIMAND

METRIC:
DISTANCES SHOWN ON THIS PLAN ARE IN METRES AND
CAN BE CONVERTED TO FEET BY DIVIDING BY 0.3048.

NOTE:
THE BOUNDARIES AND MEASUREMENTS SHOWN ON THIS SKETCH
ARE BASED ON A PLAN OF SURVEY BY OUR OFFICE DATED APRIL
12, 2024 (INDEX No. T-3573).

THIS SKETCH IS NOT VALID UNLESS IT IS
AN ENCLOSED ORIGINAL COPY OR CERTIFIED
DIGITAL COPY ISSUED BY THE SURVEYOR

THIS SKETCH IS PREPARED TO ACCOMPANY AN APPLICATION
TO THE LAND DIVISION COMMITTEE REQUESTING A GRANT
OF SEVERANCE AND IS NOT INTENDED FOR REGISTRATION.

CONSENT SCHEDULE:

PART 1 (LANDS TO BE SEVERED)	AREA = 6,429.09m ²
PART 2 (LANDS TO BE SEVERED)	AREA = 6,378.31m ²
PART 3 (LANDS TO BE SEVERED)	AREA = 6,899.39m ²
PART 4 (LANDS TO BE SEVERED)	AREA = 6,246.33m ²
PART 5 (LANDS TO BE RETAINED)	AREA = 14,592.63m ²

CAUTION:
THIS IS NOT A PLAN OF SUBDIVISION AND SHALL NOT BE
USED FOR TRANSACTION OR MORTGAGE PURPOSES.

JULY 26, 2024
DATE
NICHOLAS P. MUTH
ONTARIO LAND SURVEYOR

A. J. Clarke and Associates Ltd.
SURVEYORS • PLANNERS • ENGINEERS
23 MAIN STREET WEST, SUITE 300
HAMILTON, ONTARIO, L8P 1H1
TEL. 905-528-8761 FAX 905-528-2289
email: a.jc@ajclarke.com

© COPYRIGHT, 2024 A. J. CLARKE & ASSOCIATES LTD.
THE REPRODUCTION, ALTERATION OR USE OF THIS REPORT,
IN WHOLE OR IN PART, WITHOUT THE EXPRESS PERMISSION OF
A. J. CLARKE & ASSOCIATES LTD. IS STRICTLY PROHIBITED
PROJECT No. 238081P