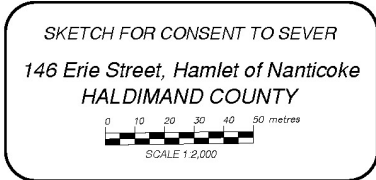
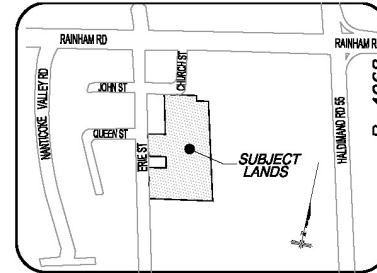
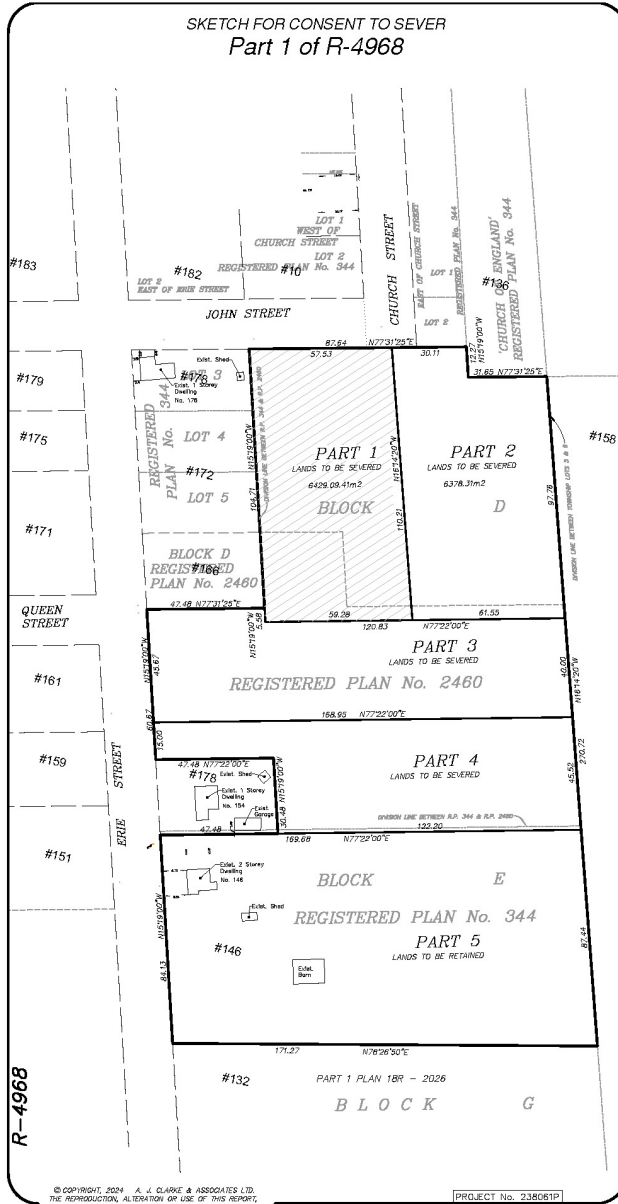


# Owner's Sketch FILE #PLB-2024-182 APPLICANT: Jamieson & Monahan



THE ABOVE NOTED LANDS ARE PART OF BLOCK D, REGISTERED PLAN 2460 AND PART OF BLOCK E, REGISTERED PLAN 344 COUNTY OF HALDIMAND

**METRIC:**  
DISTANCES SHOWN ON THIS PLAN ARE IN METRES AND CAN BE CONVERTED TO FEET BY DIVIDING BY 0.3048.

**NOTE:**  
THE BOUNDARIES AND MEASUREMENTS SHOWN ON THIS SKETCH ARE BASED ON A PLAN OF SURVEY BY OUR OFFICE DATED APRIL 12, 2024 (INDEX No. T-3573).

THIS SKETCH IS NOT VALID UNLESS IT IS AN ENCLOSED ORIGINAL COPY OR CERTIFIED DIGITAL COPY ISSUED BY THE SURVEYOR

THIS SKETCH IS PREPARED TO ACCOMPANY AN APPLICATION TO THE LAND DIVISION COMMITTEE REQUESTING A GRANT OF SEVERANCE AND IS NOT INTENDED FOR REGISTRATION.

**CONSENT SCHEDULE:**

PART 1 (LANDS TO BE SEVERED)	AREA = 6,429.09m <sup>2</sup>
PART 2 (LANDS TO BE SEVERED)	AREA = 6,378.31m <sup>2</sup>
PART 3 (LANDS TO BE SEVERED)	AREA = 6,899.39m <sup>2</sup>
PART 4 (LANDS TO BE SEVERED)	AREA = 6,246.33m <sup>2</sup>
PART 5 (LANDS TO BE RETAINED)	AREA = 14,592.63m <sup>2</sup>

**CAUTION:**  
THIS IS NOT A PLAN OF SUBDIVISION AND SHALL NOT BE USED FOR TRANSACTION OR MORTGAGE PURPOSES.

JULY 26, 2024  
DATE  
NICHOLAS P. MUTH  
ONTARIO LAND SURVEYOR

**A. J. Clarke and Associates Ltd.**  
SURVEYORS • PLANNERS • ENGINEERS  
23 MAIN STREET WEST, SUITE 300  
HAMILTON, ONTARIO, L8P 1H1  
TEL. 905-528-8761 FAX 905-528-2289  
email: ajc@ajclarke.com

© COPYRIGHT, 2024 A. J. CLARKE & ASSOCIATES LTD. THE REPRODUCTION, ALTERATION OR USE OF THIS REPORT, IN WHOLE OR IN PART, WITHOUT THE EXPRESS PERMISSION OF A. J. CLARKE & ASSOCIATES LTD. IS STRICTLY PROHIBITED. PROJECT No. 238081P