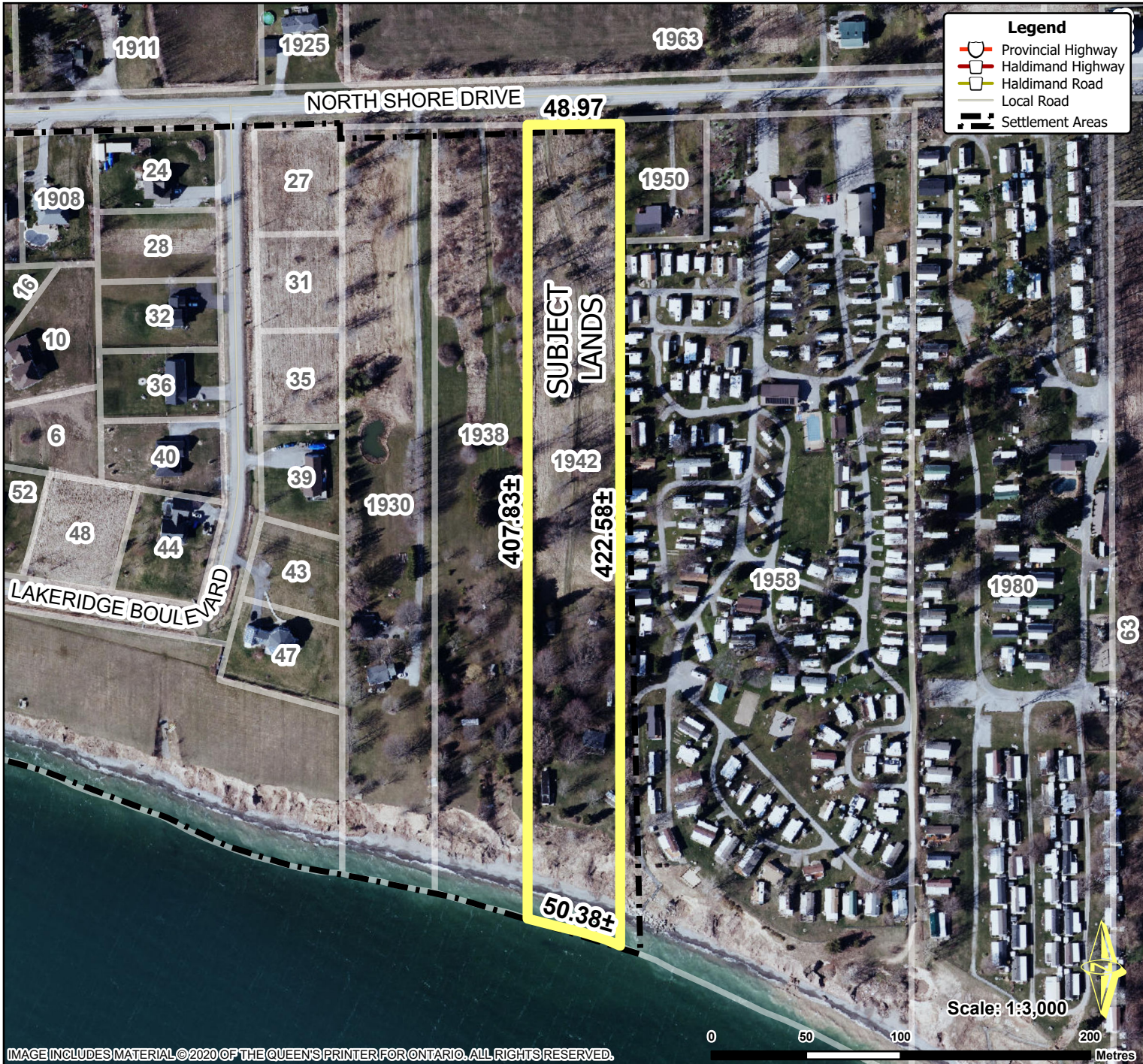


Location Map FILE #PLA-2024-170 APPLICANT: Rymarn Holdings Inc



Location:
1942 NORTH SHORE DRIVE
GEOGRAPHIC TOWNSHIP OF SHERBROOKE
WARD 5

Legal Description:
SHB CON 1 PT LOT 10 RP 18R2861 PART 3

Property Assessment Number:
2810 025 002 00520 0000

Size:
2.027 Hectares

Zoning:
OS (Open Space), HCOP Lakeshore Hazard
Lands, GRCA Regulated Lands

HALDIMAND COUNTY, ITS EMPLOYEES, OFFICERS AND AGENTS ARE NOT RESPONSIBLE FOR ANY ERRORS, OMISSIONS OR INACCURACIES WHETHER DUE TO THEIR OWN NEGLIGENCE OR OTHERWISE. DO NOT USE FOR OPERATING MAP OR DESIGN PURPOSES. ALL INFORMATION TO BE VERIFIED.

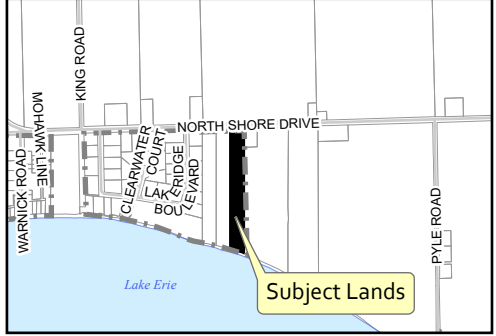


IMAGE INCLUDES MATERIAL ©2020 OF THE QUEEN'S PRINTER FOR ONTARIO. ALL RIGHTS RESERVED.