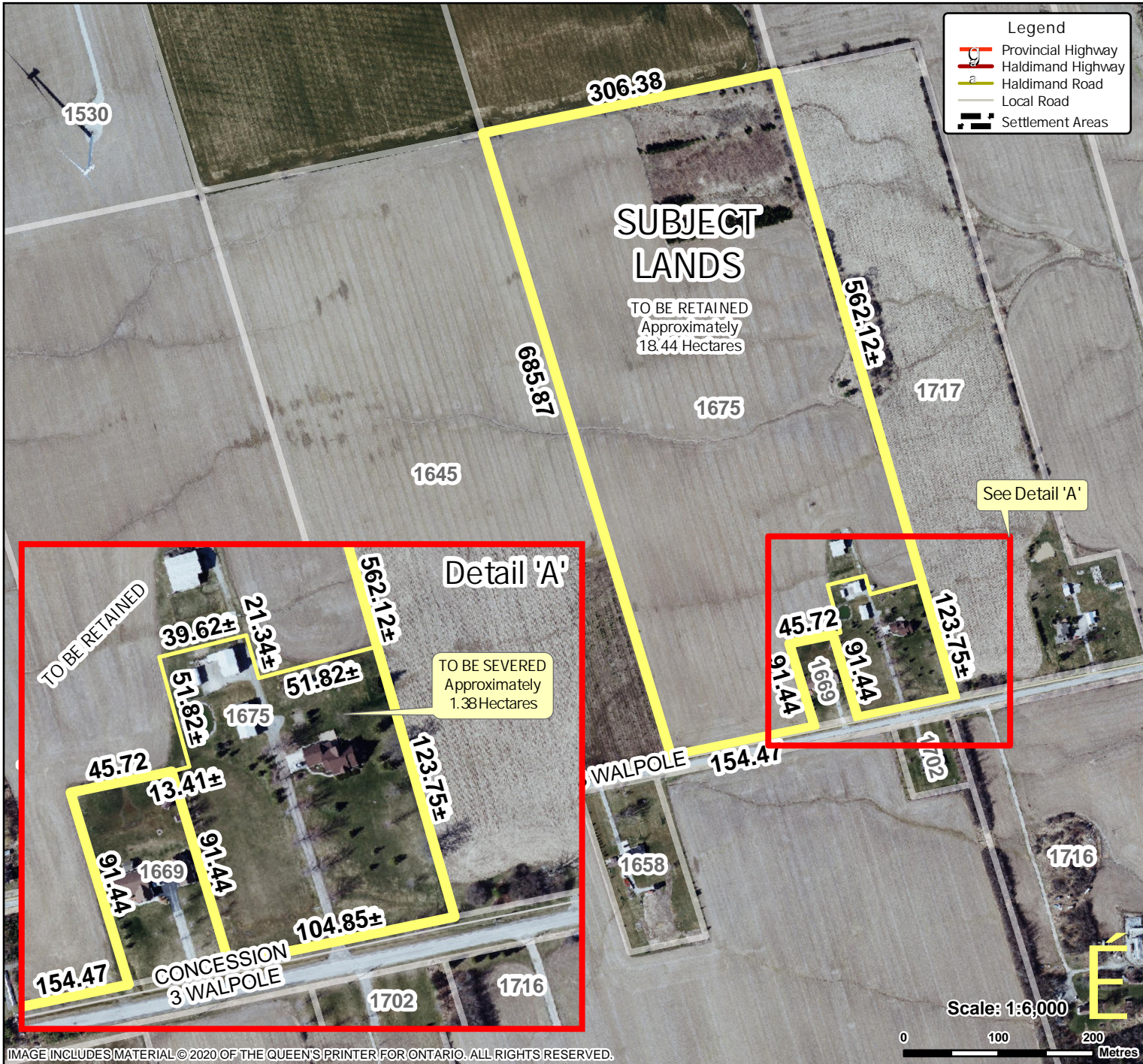


Location Map FILE #PLZ-HA-2024-039 APPLICANT: Shepland Farms Ltd



Location:
 1675 CONCESSION 3 WALPOLE
 GEOGRAPHIC TOWNSHIP OF WALPOLE
 WARD 1

Legal Description:
 WAL CON 4 PT LOT 21

Property Assessment Number:
 2810 332 002 82800 0000

Size:
 19.82 Hectares

Zoning:
 A (Agriculture)

HALDIMAND COUNTY, ITS EMPLOYEES, OFFICERS AND AGENTS ARE NOT RESPONSIBLE FOR ANY ERRORS, OMISSIONS OR INACCURACIES WHETHER DUE TO THEIR OWN NEGLIGENCE OR OTHERWISE. DO NOT USE FOR OPERATING MAP OR DESIGN PURPOSES. ALL INFORMATION TO BE VERIFIED.

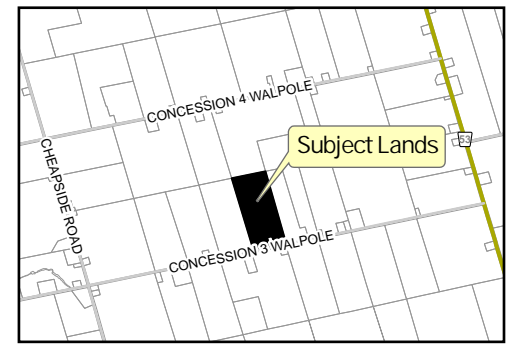


IMAGE INCLUDES MATERIAL © 2020 OF THE QUEEN'S PRINTER FOR ONTARIO. ALL RIGHTS RESERVED.