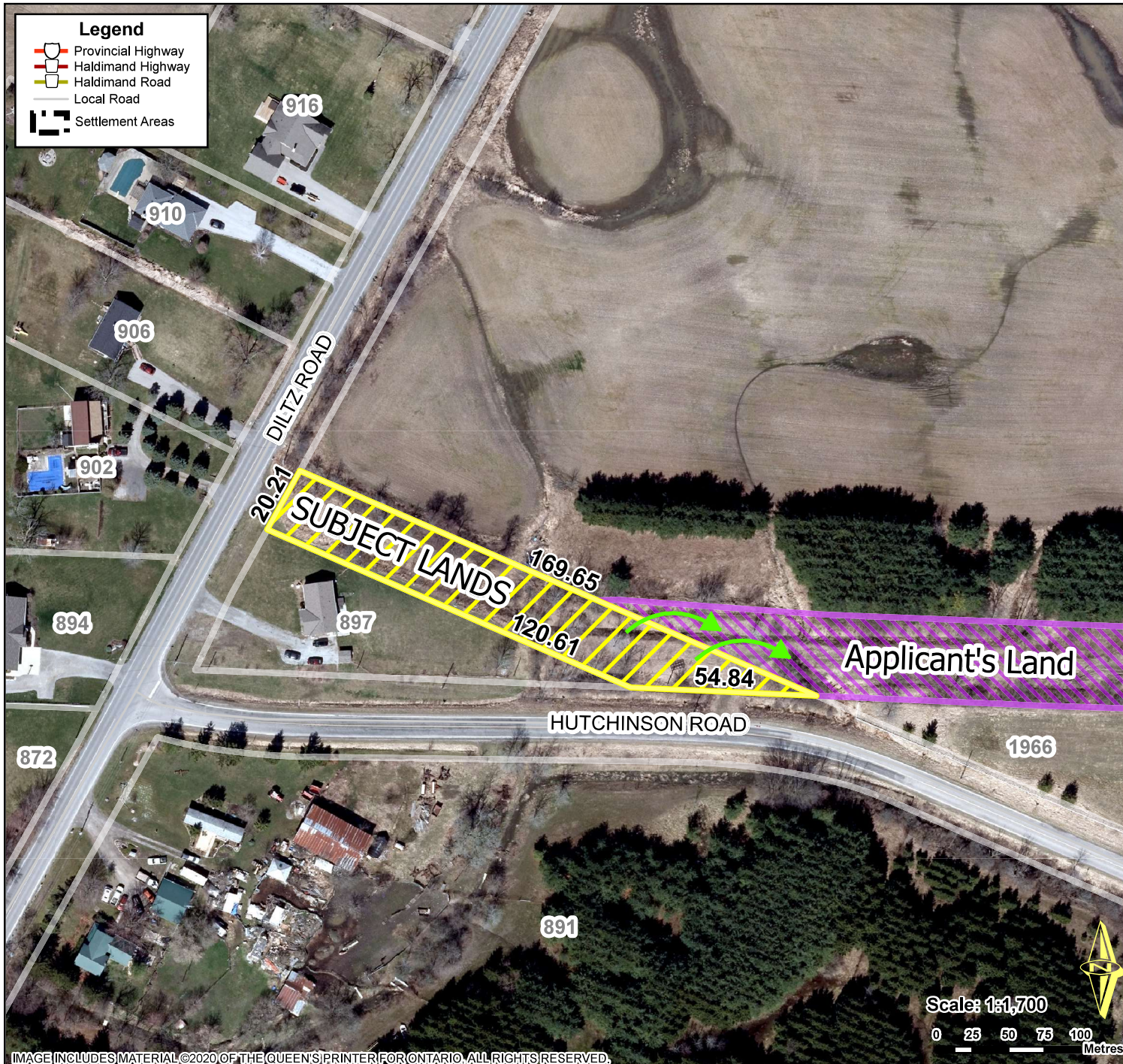


Location Map: Part of Diltz Station Road - Dunnville



Location:

**DILTZ STATION ROAD
GEOGRAPHIC TOWNSHIP OF MOULTON
WARD 5**

Legal Description:

**PART OF ROAD ALLOWANCE BETWEEN MLT
LOTS 15 & 16 CON 2 FROM CANBOROUGH
RP 181909 PTS 1-3**

Property Assessment Number:

N/A

Size:

0.72 Acres

Zoning:

RIGHT OF WAY

HALDIMAND COUNTY, ITS EMPLOYEES, OFFICERS AND AGENTS ARE NOT RESPONSIBLE FOR ANY ERRORS, OMISSIONS OR INACCURACIES WHETHER DUE TO THEIR OWN NEGLIGENCE OR OTHERWISE. DO NOT USE FOR OPERATING MAP OR DESIGN PURPOSES. ALL INFORMATION TO BE VERIFIED.

