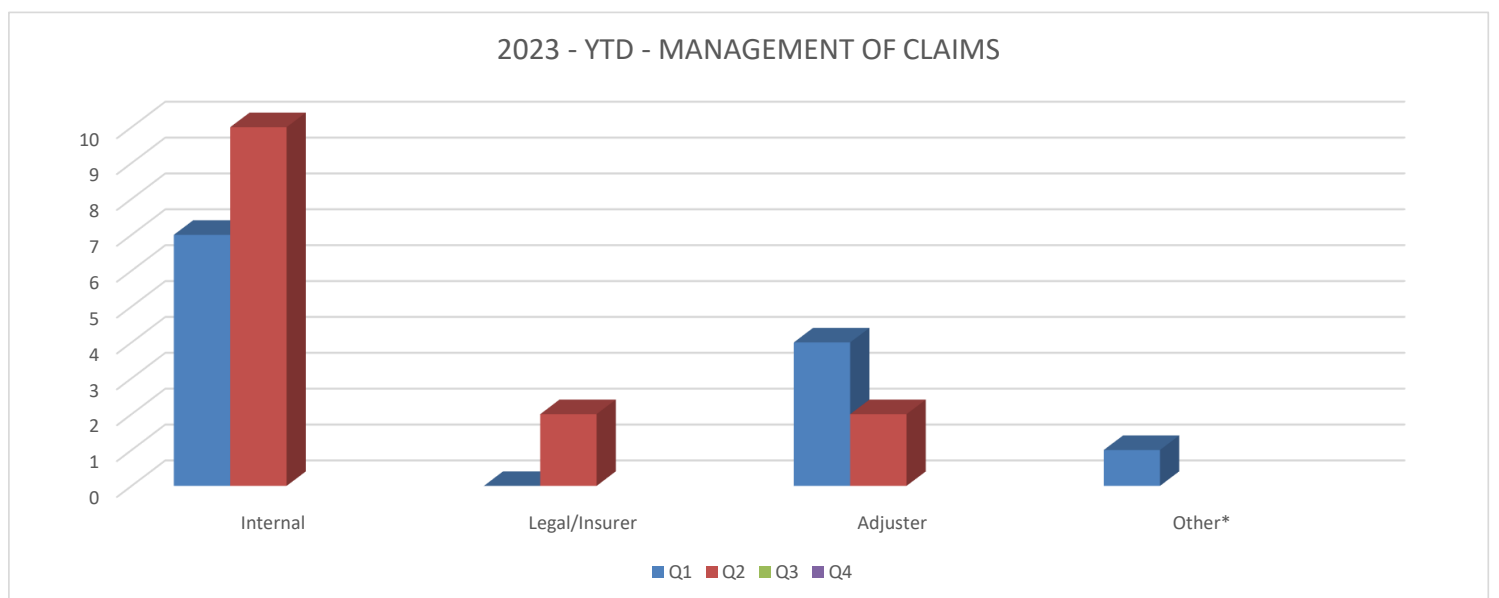
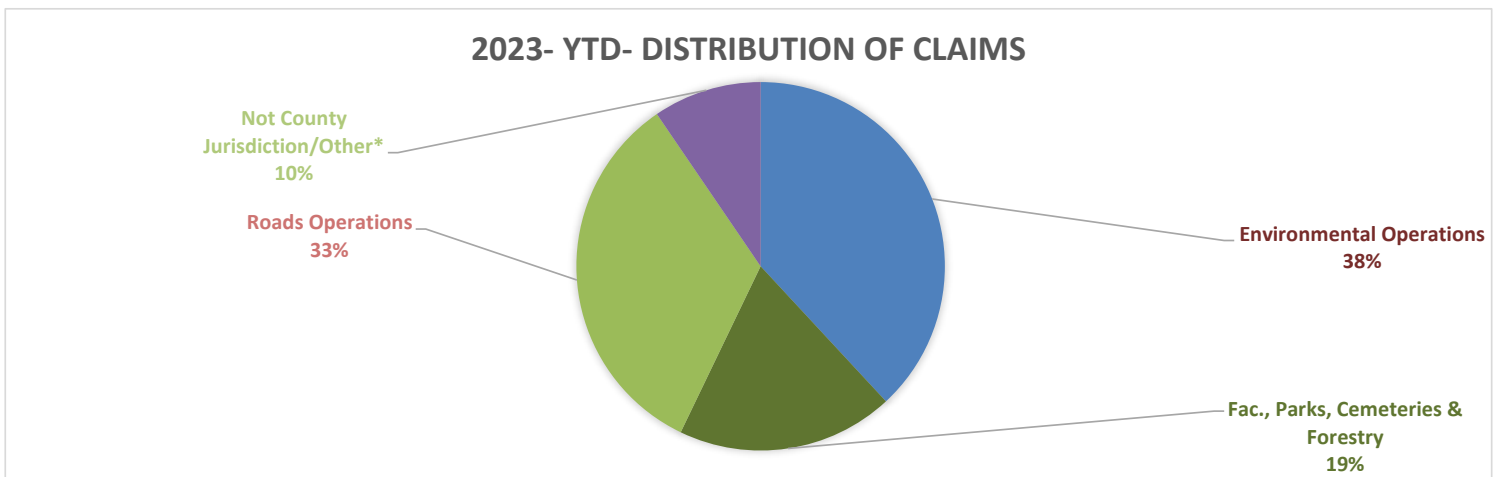
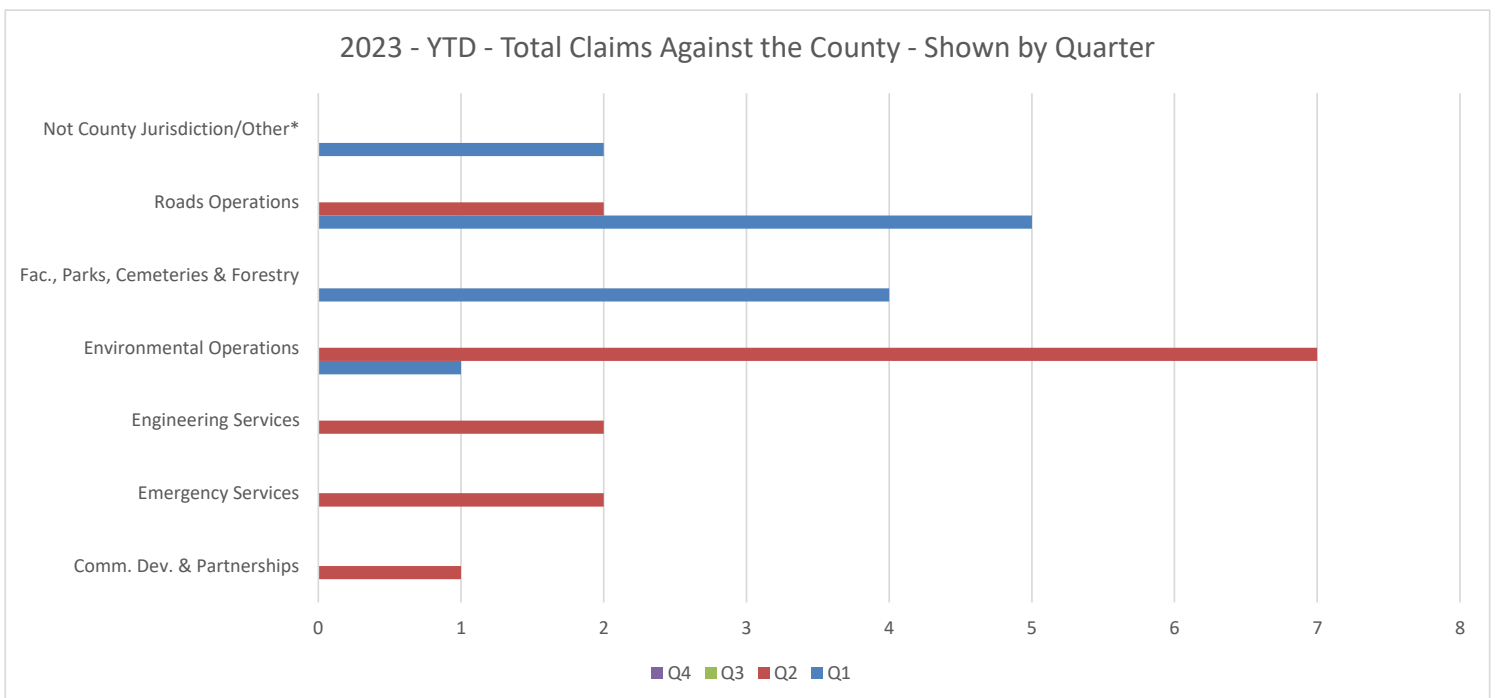
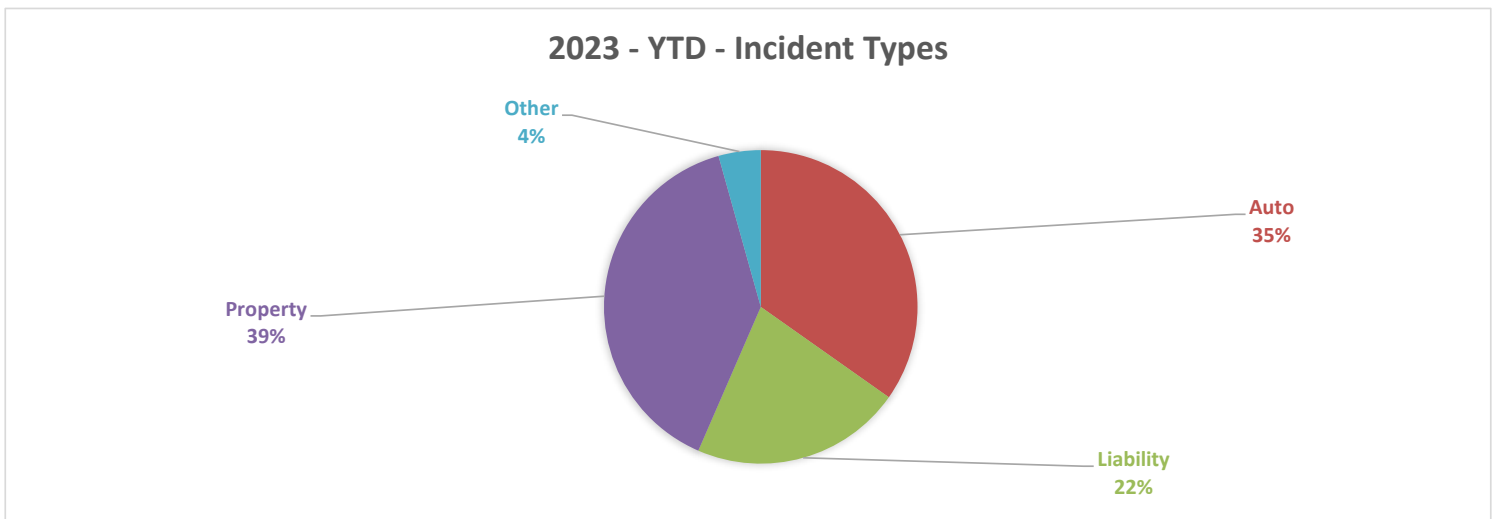


Haldimand County								
2023 - Q2 Claims Data - Total Claims against the County								
Dept./Division Affected	Q1	Q2	Q3	Q4	2020	2021	2022	2023 YTD
Building & Municipal Enforcement					1	4	2	0
Comm. Dev. & Partnerships		1			0	0	0	1
Corporate & Social Services					0	1	0	0
Council & Mayor's Office					1	0	0	0
Economic Dev. & Tourism					0	0	0	0
Emergency Services		2			1	0	2	2
Engineering Services		2			1	0	1	2
Environmental Operations	1	7			2	9	4	8
Fac., Parks, Cemeteries & Forestry	4				7	4	4	4
Financial & Data Services					0	0	0	0
Fleet Operations					0	0	0	0
Grandview Lodge					0	0	1	0
Libraries					0	0	0	0
Roads Operations	5	2			18	15	23	7
Not County Jurisdiction/Other*	2				10	5	15	2
<b>Total</b>	<b>12</b>	<b>14</b>	<b>0</b>	<b>0</b>	<b>41</b>	<b>38</b>	<b>52</b>	<b>26</b>



*\*Third Party/Contractor Responsibility*

*Data showing zero values have been removed from charts*



*Data showing zero values have been removed from charts*