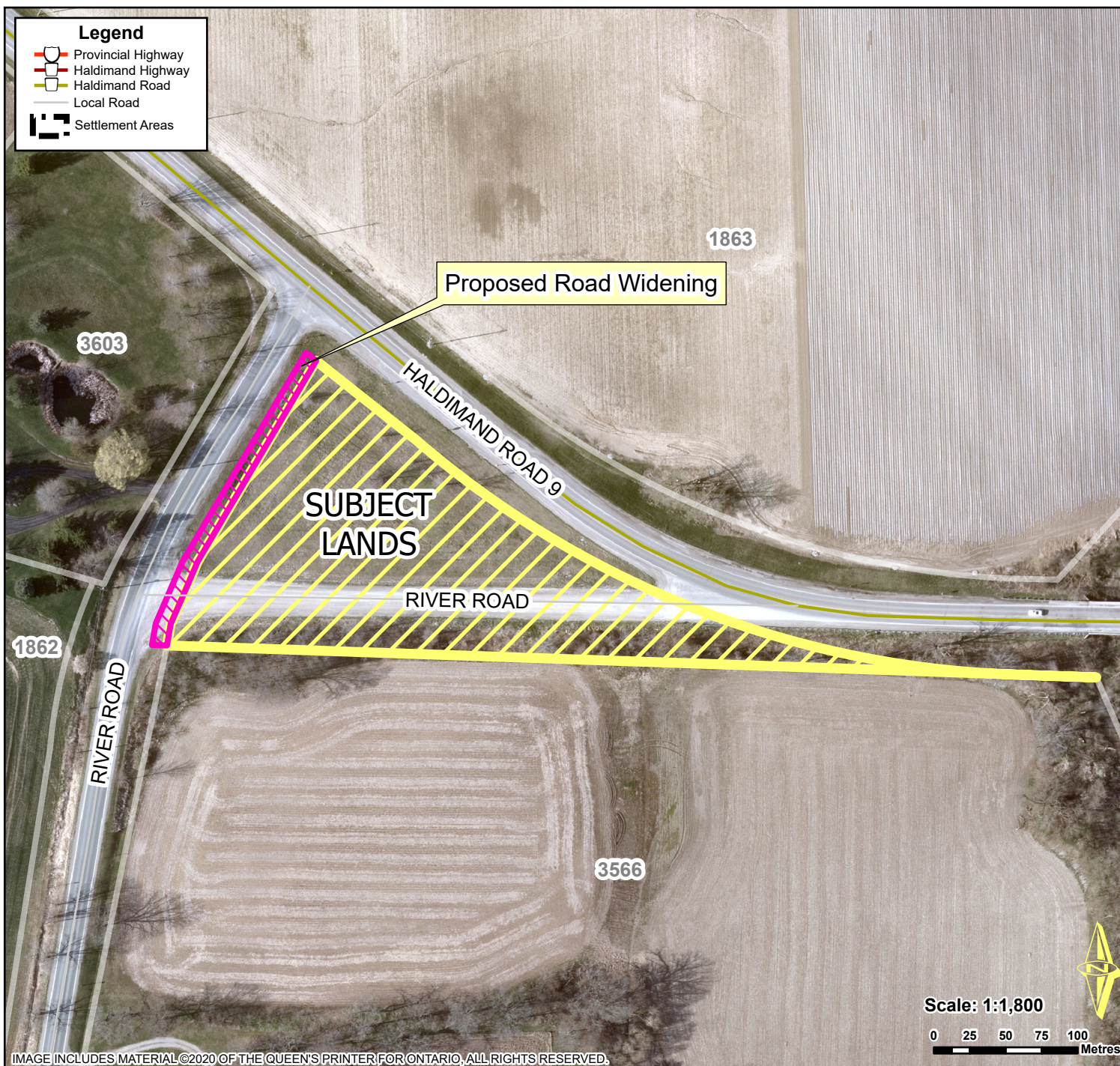


Location Map: Part of River Road (County Road 9) "Tiffany Block", York



Location:

Intersection of Haldimand Road 9 & River Road

Legal Description:

ONEIDA PT BLK TIFFANY RP 18R4459 PT OF PARTS 1, 2, 3, & 5

Property Assessment Number:

N/A

Size:

Approx 2.22 Acres

Zoning:

Right of Way

HALDIMAND COUNTY, ITS EMPLOYEES, OFFICERS AND AGENTS ARE NOT RESPONSIBLE FOR ANY ERRORS, OMISSIONS OR INACCURACIES WHETHER DUE TO THEIR OWN NEGLIGENCE OR OTHERWISE. DO NOT USE FOR OPERATING MAP OR DESIGN PURPOSES. ALL INFORMATION TO BE VERIFIED.

