

# Location Map - Springvale Park

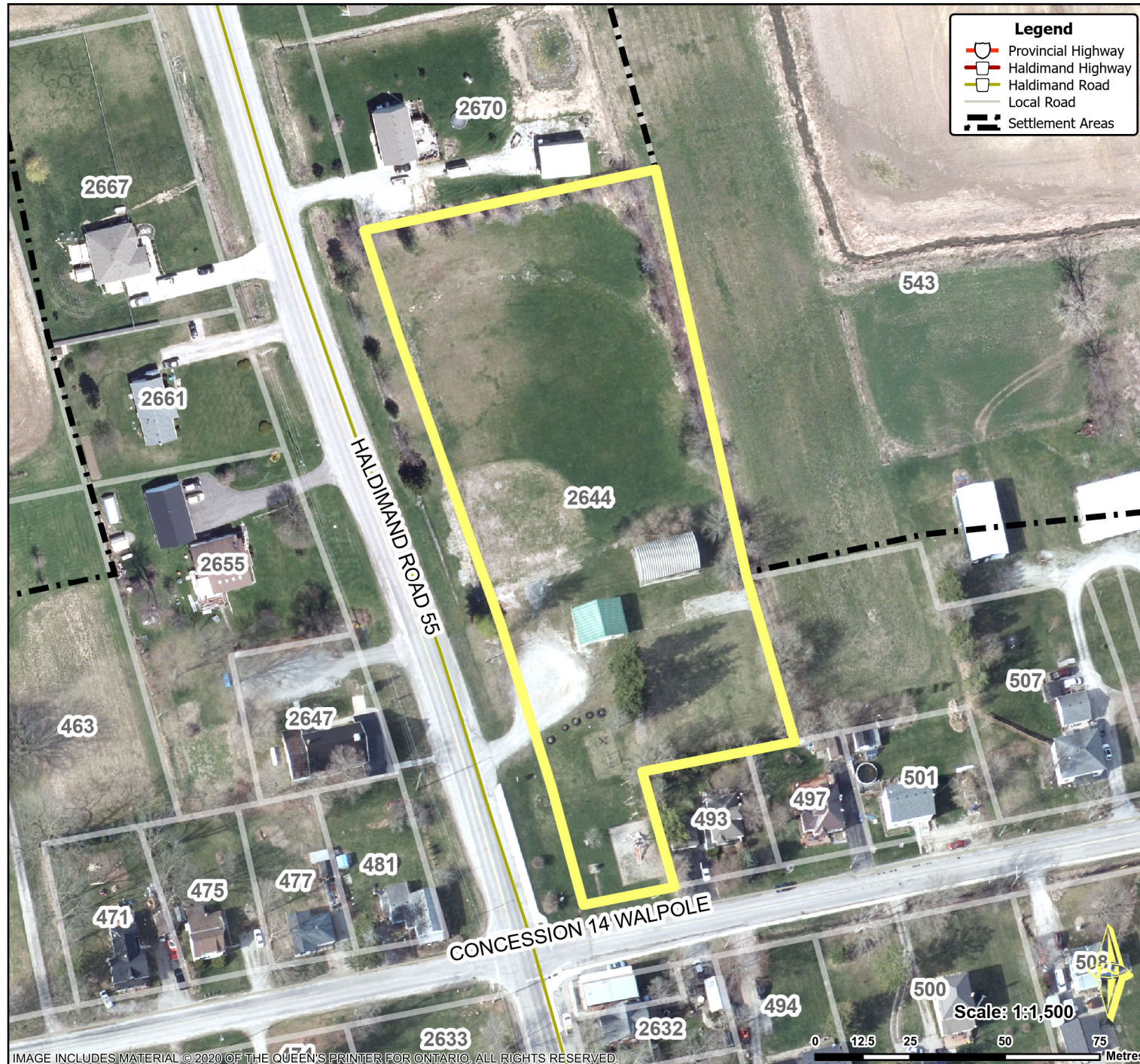


IMAGE INCLUDES MATERIAL © 2020 OF THE QUEEN'S PRINTER FOR ONTARIO. ALL RIGHTS RESERVED.

PREPARED BY HALDIMAND COUNTY PLANNING & ECONOMIC DEVELOPMENT DEPARTMENT,  
GIS & GRAPHICS SECTION, Feb 2023



## Location:

**2644 HALDIMAND ROAD 55  
GEOGRAPHIC TOWNSHIP OF WALPOLE  
WARD 1**

## Legal Description:

**WAL CON 15 PT LOT 7 RP 18R1319 PART 1**

## Property Assessment Number:

**2810 332 006 11010 0000**

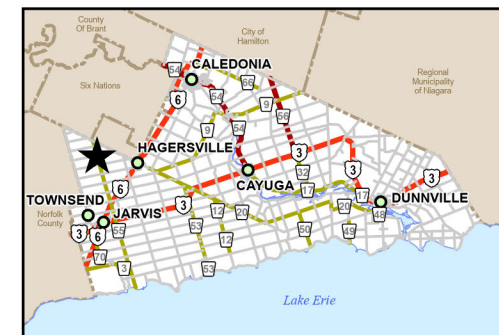
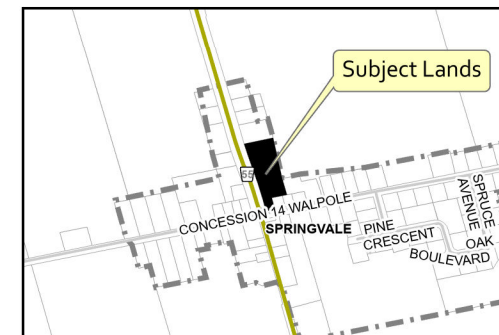
## Size:

**3.07 Acres**

## Zoning:

**IR (Rural Institutional)**

HALDIMAND COUNTY, ITS EMPLOYEES, OFFICERS AND AGENTS ARE NOT RESPONSIBLE FOR ANY ERRORS, OMISSIONS OR INACCURACIES WHETHER DUE TO THEIR OWN NEGLIGENCE OR OTHERWISE. DO NOT USE FOR OPERATING MAP OR DESIGN PURPOSES. ALL INFORMATION TO BE VERIFIED.



Path: P:\REQUEST\GIS\Tickets\Ticket5128\SpringvalePark\SpringvalePark.aprx