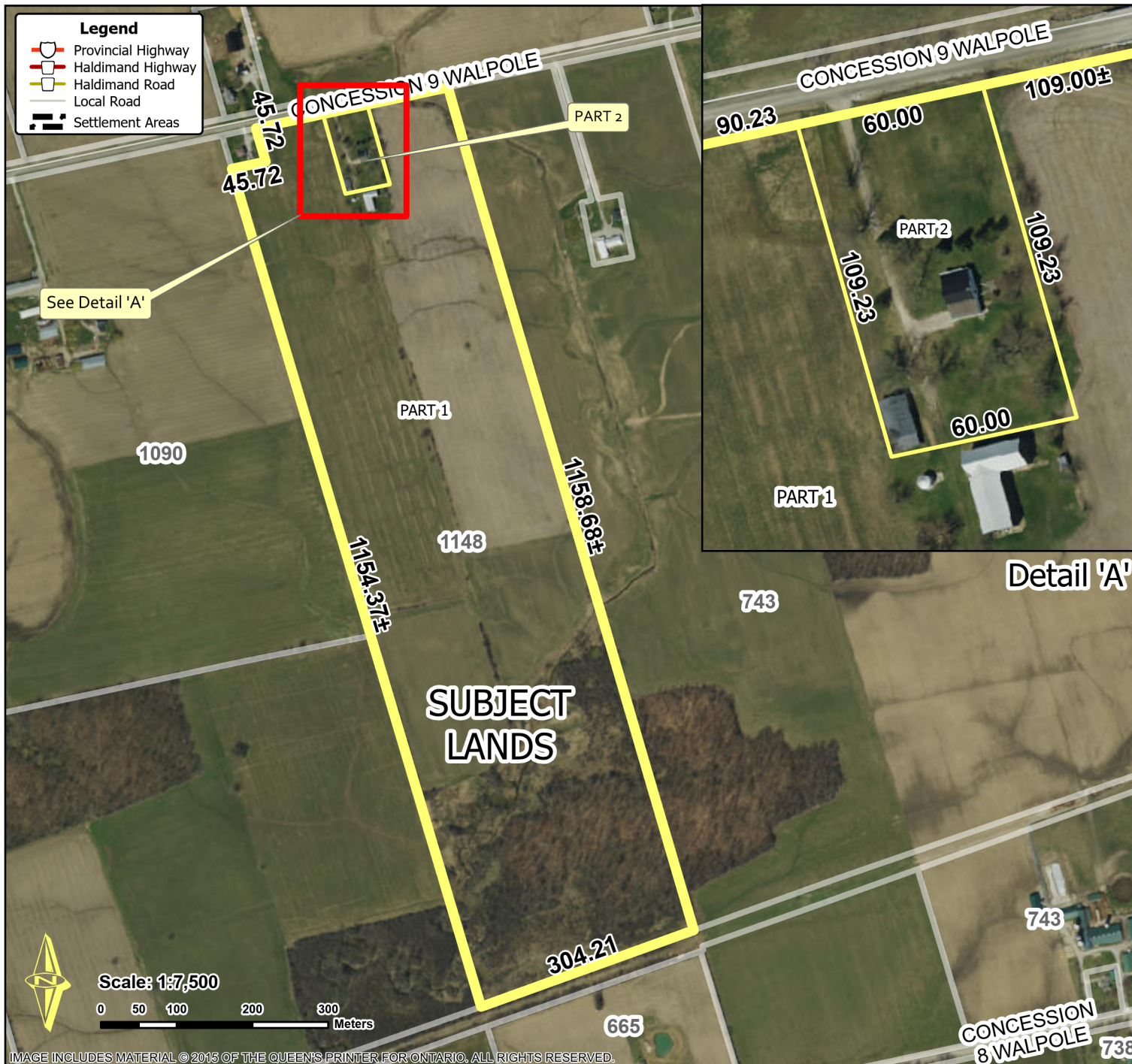


Location Map FILE #PLZ-HA-2022-100 APPLICANT: AG Strobosser Farms Inc.



Location:

**1148 CONCESSION 9 WALPOLE
GEOGRAPHIC TOWNSHIP OF WALPOLE
WARD 1**

Legal Description:

**WALPOLE CON 9 PT LOT 15 NORTH OF
RP 18R5429 PARTS 3 TO 5**

Property Assessment Number:

2810 332 004 13200 0000

Size:

83.62 Acres

Zoning:

A (Agricultural) & LPRCA Regulated Lands

HALDIMAND COUNTY, ITS EMPLOYEES, OFFICERS AND AGENTS ARE NOT RESPONSIBLE FOR ANY ERRORS, OMISSIONS OR INACCURACIES WHETHER DUE TO THEIR OWN NEGLIGENCE OR OTHERWISE. DO NOT USE FOR OPERATING MAP OR DESIGN PURPOSES. ALL INFORMATION TO BE VERIFIED.

