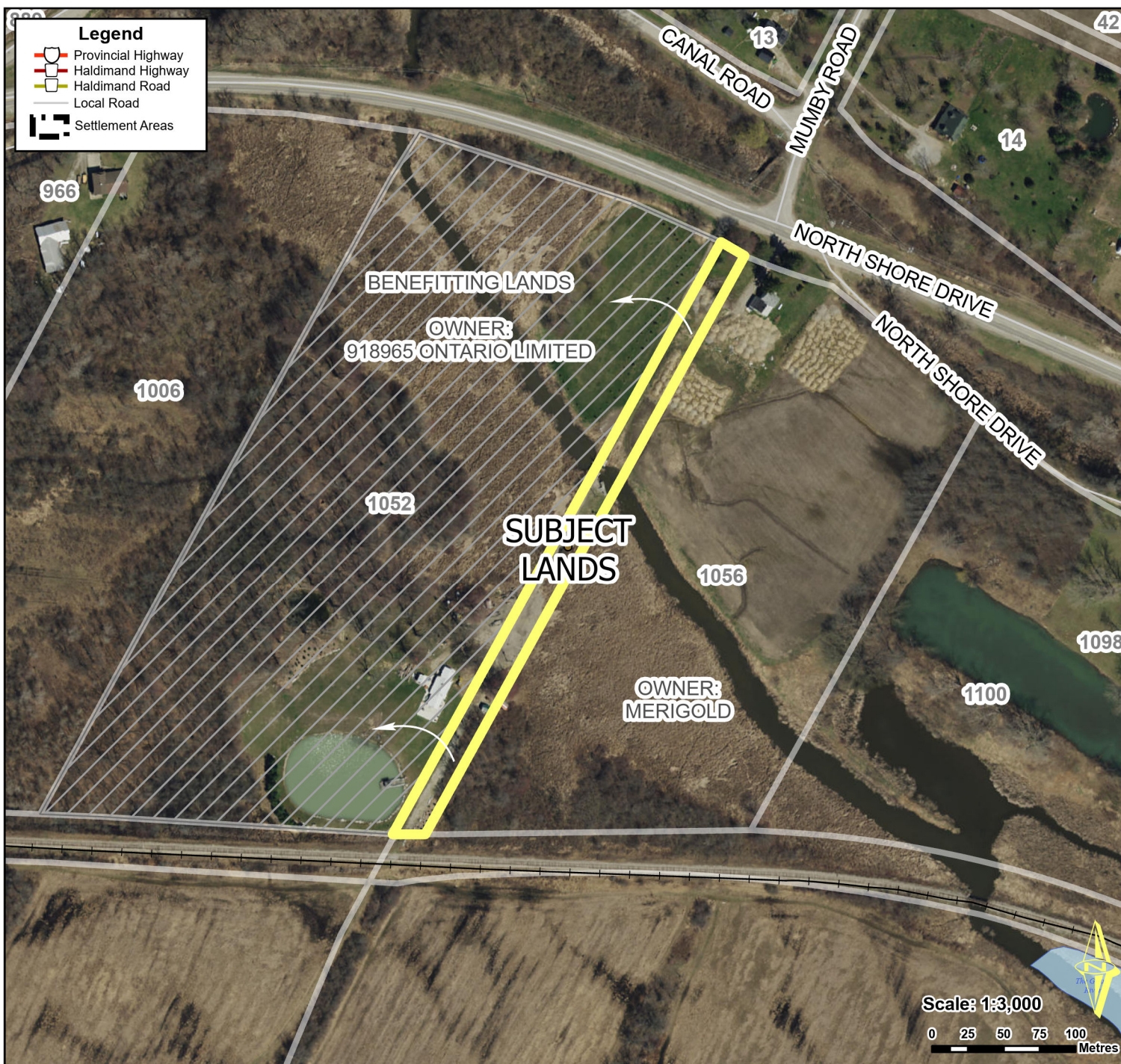


# Road Closure and Conveyance of Part of Military Road, Dunnville



## Location:

**NORTH SHORE DRIVE  
GEOGRAPHIC TOWNSHIP OF MOULTON  
WARD 5**

## Legal Description:

**THE ORIGINAL ROAD ALLOWANCE  
BETWEEN LOTS 12 AND 13, FRIST RANGE  
FROM GRAND RIVER (UNOPENED)**

HALDIMAND COUNTY, ITS EMPLOYEES, OFFICERS AND AGENTS ARE NOT RESPONSIBLE FOR ANY ERRORS, OMISSIONS OR INACCURACIES WHETHER DUE TO THEIR OWN NEGLIGENCE OR OTHERWISE. DO NOT USE FOR OPERATING MAP OR DESIGN PURPOSES. ALL INFORMATION TO BE VERIFIED.

