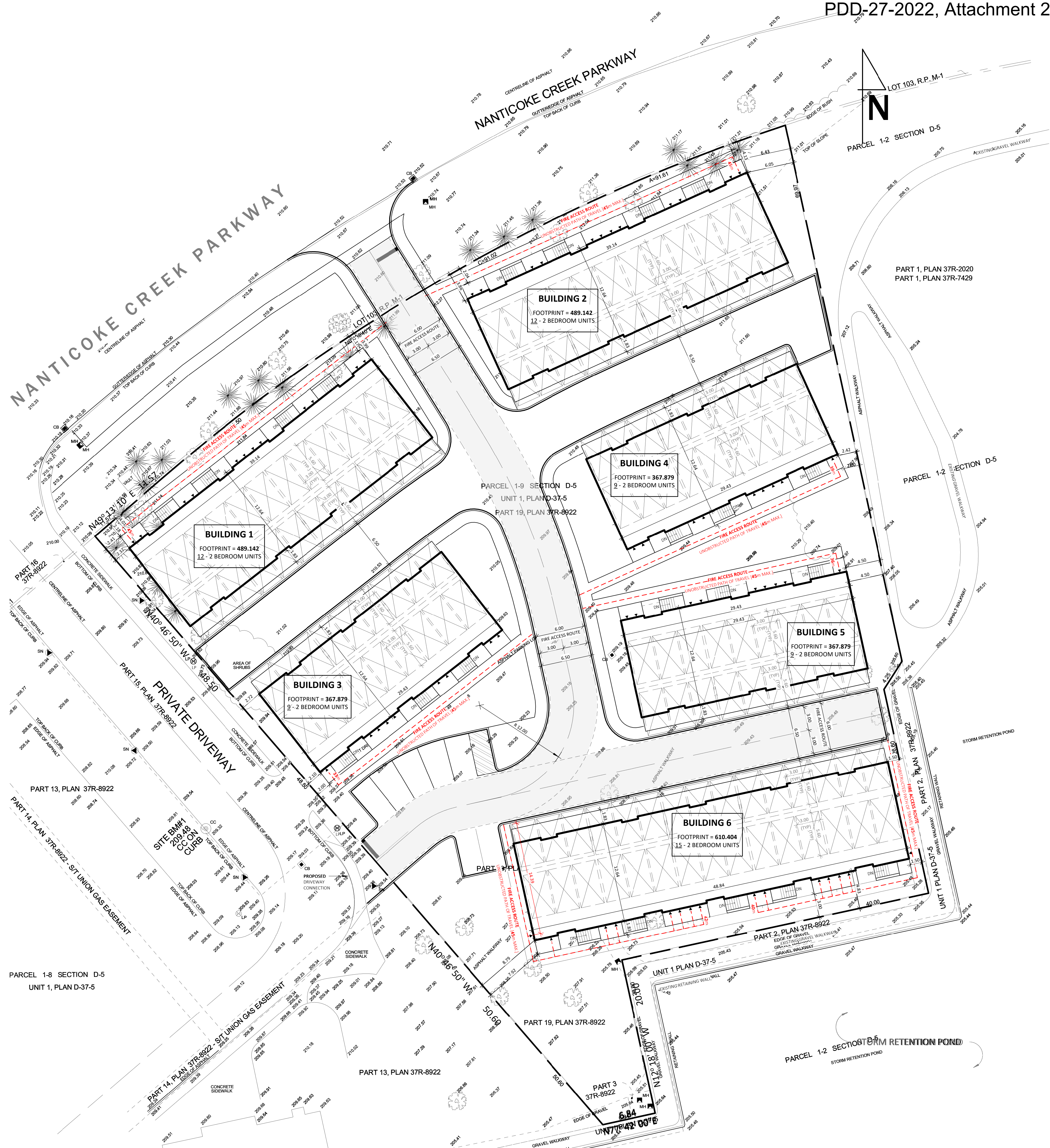


1	ZONING	
2	TOTAL LOT AREA	7,410.412 m²
3	TOTAL LOT FRONTAGE	103.2009 m
4	TOTAL LOT COVERAGE EXCLUDING PORCHES/BALCONIES	2,692.325 m² [36.33%]
5	BUILDING 1	489.142 m²
	BUILDING 2	489.142 m²
	BUILDING 3	367.879 m²
	BUILDING 4	367.879 m²
	BUILDING 5	367.879 m²
	BUILDING 6	610.404 m²
	TOTAL LOT COVERAGE INCLUDING PORCHES/BALCONIES	3,277.900 m² [44.23%]
6	BUILDING 1	595.644 m²
	BUILDING 2	595.644 m²
	BUILDING 3	447.799 m²
	BUILDING 4	447.799 m²
	BUILDING 5	447.799 m²
	BUILDING 6	743.215 m²
	TOTAL GROSS FLOOR AREA	7,747.658 m²
7	BUILDING 1	BASEMENT 46.686 m²
		1ST FLOOR 489.142 m²
		2ND FLOOR 442.464 m²
		3RD FLOOR 447.142 m²
	TOTAL	1,378.748 m²
8	BUILDING 2	BASEMENT 46.686 m²
		1ST FLOOR 489.142 m²
		2ND FLOOR 442.464 m²
		3RD FLOOR 447.142 m²
	TOTAL	1,378.748 m²
9	BUILDING 3	BASEMENT 35.014 m²
		1ST FLOOR 367.879 m²
		2ND FLOOR 331.848 m²
		3RD FLOOR 335.357 m²
	TOTAL	1,070.098 m²
10	BUILDING 4	BASEMENT 35.014 m²
		1ST FLOOR 367.879 m²
		2ND FLOOR 331.848 m²
		3RD FLOOR 335.357 m²
	TOTAL	1,070.098 m²
11	BUILDING 5	BASEMENT 35.014 m²
		1ST FLOOR 367.879 m²
		2ND FLOOR 331.848 m²
		3RD FLOOR 335.357 m²
	TOTAL	1,070.098 m²
12	BUILDING 6	BASEMENT 58.357 m²
		1ST FLOOR 610.404 m²
		2ND FLOOR 553.079 m²
		3RD FLOOR 558.028 m²
	TOTAL	1,779.868 m²
13	FLOOR SPACE INDEX	1.05
14	HARD SURFACE	2,657.264 m² [35.96%]
15	SOFT SURFACE (LANDSCAPED AREA)	1,475.248 m² [19.91%]
16	BUILDING HEIGHT	BUILDING 1 3 STOREYS
		BUILDING 2 3 STOREYS
		BUILDING 3 3 STOREYS
		BUILDING 4 3 STOREYS
		BUILDING 5 3 STOREYS
		BUILDING 6 3 STOREYS
	UNIT BREAKDOWN	66 UNITS
17	BUILDING 1	12
	BUILDING 2	12
	BUILDING 3	9
	BUILDING 4	9
	BUILDING 5	9
	BUILDING 6	15
	NUMBER OF PARKING SPACES	132 SPACES
18	BUILDING 1	2 SPACES PER UNIT = 2 X 12 UNITS
	BUILDING 2	2 SPACES PER UNIT = 2 X 12 UNITS
	BUILDING 3	2 SPACES PER UNIT = 2 X 9 UNITS
	BUILDING 4	2 SPACES PER UNIT = 2 X 9 UNITS
	BUILDING 5	2 SPACES PER UNIT = 2 X 9 UNITS
	BUILDING 6	2 SPACES PER UNIT = 2 X 15 UNITS
	NUMBER OF VISITOR SPACES	7 SPACES



PDD-27-2022, Attachment 2

STAMP&HAMMER

STAMP & HAMMER  
17-1100 GORHAM STREET  
NEWMARKET ON LEY 8Y8  
905-235-3933  
info@stampandhammer.com

NO.	DESCRIPTION	DATE	BY
1	ISSUED FOR CONSULTANT COORDINATION	FEB 07 2022	M.S.

TIME DATE STAMP: 2022-05-27 10:46:24 AM

REVISION SCHEDULE

PARKWAY STACKED TOWNS

NEW CONSTRUCTION | MULTIH-RESIDENTIAL | STACKED TOWNHOMES | 77 UNITS  
103 NANTICOKE CREEK PKWY  
TOWNSEND ON NOA 150  
HALDIMAND COUNTY

As indicated

DATE: FEBRUARY 2022

TITLE: SITE PLAN

A-002

NOTE: CONTRACTOR WILL CHECK AND VERIFY ALL DIMENSIONS AND CHECK ALL COORDINATES FOR THE JOB SITE BEFORE PROCEEDING WITH ANY WORK.