

Location Map - 118 Talbot Street East, Jarvis

LSS-16-2021, Attachment 1



Location:

**118 TALBOT STREET EAST
URBAN AREA OF JARVIS
WARD 1**

Legal Description:

JAR CON 8 PT LOT 5

Property Assessment Number:

2810 331 004 11500 0000

Size:

0.21 Acres

Zoning:

IC (Community Institutional)

HALDIMAND COUNTY, ITS EMPLOYEES, OFFICERS AND AGENTS ARE NOT RESPONSIBLE FOR ANY ERRORS, OMISSIONS OR INACCURACIES WHETHER DUE TO THEIR OWN NEGLIGENCE OR OTHERWISE. DO NOT USE FOR OPERATING MAP OR DESIGN PURPOSES. ALL INFORMATION TO BE VERIFIED.

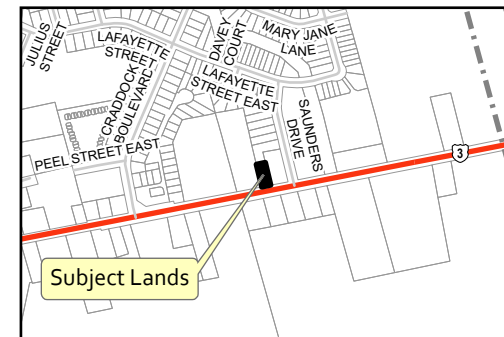


IMAGE INCLUDES MATERIAL © 2015 OF THE QUEEN'S PRINTER FOR ONTARIO. ALL RIGHTS RESERVED.