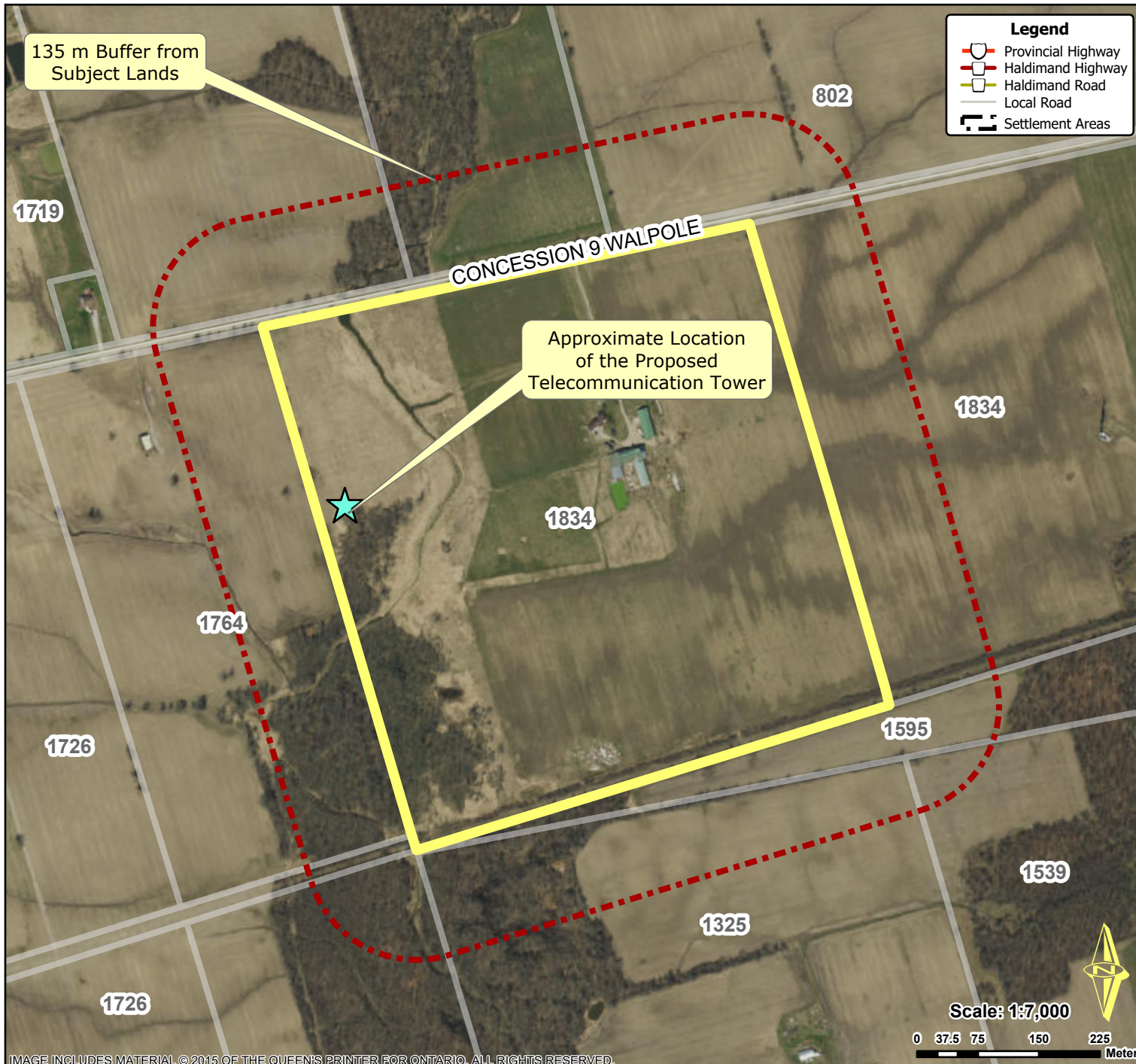


# Location Map - Telecommunication Tower - 1834 Concession 9 Walpole

PDD-32-2021, Attachment 1



## Location:

**1834 CONCESSION 9 WALPOLE  
GEOGRAPHIC TOWNSHIP OF WALPOLE  
WARD 1**

## Legal Description:

**WAL CON 9 PT LOTS 23,24 RP 18R5375  
PARTS 1 TO 3 RP 18R5614 PART 4**

## Property Assessment Number:

**2810 332 004 14150 0000**

## Size:

**96.37 Acres**

HALDIMAND COUNTY, ITS EMPLOYEES, OFFICERS AND AGENTS ARE NOT RESPONSIBLE FOR ANY ERRORS, OMISSIONS OR INACCURACIES WHETHER DUE TO THEIR OWN NEGLIGENCE OR OTHERWISE. DO NOT USE FOR OPERATING MAP OR DESIGN PURPOSES. ALL INFORMATION TO BE VERIFIED.

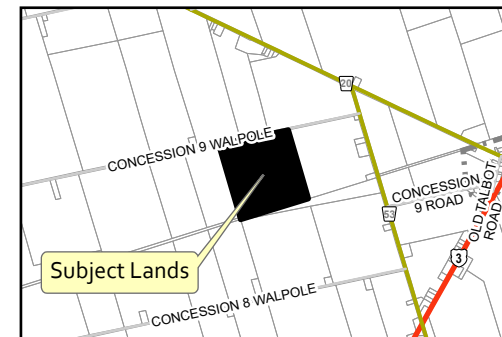


IMAGE INCLUDES MATERIAL © 2015 OF THE QUEEN'S PRINTER FOR ONTARIO. ALL RIGHTS RESERVED.

PREPARED BY HALDIMAND COUNTY PLANNING & ECONOMIC DEVELOPMENT DEPARTMENT,  
GIS & GRAPHICS SECTION. May 2021

Path: P:\REQUEST\GIS\Tickets\Ticket3708\1834Conc9Walpole\1834Conc9Walpole.aprx