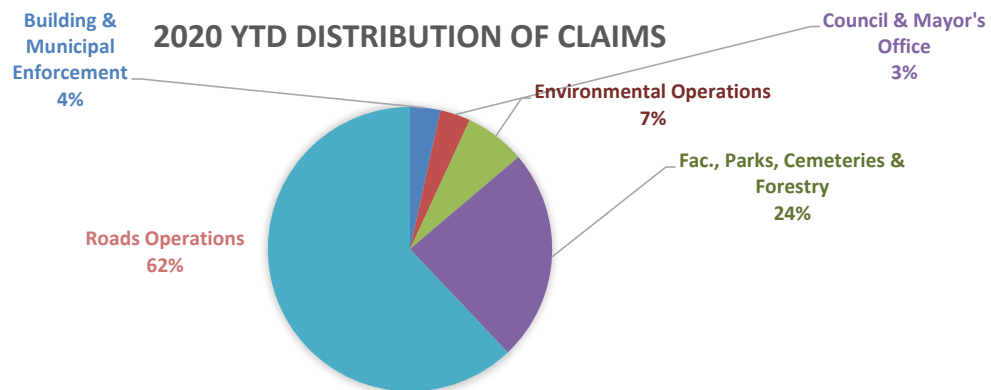
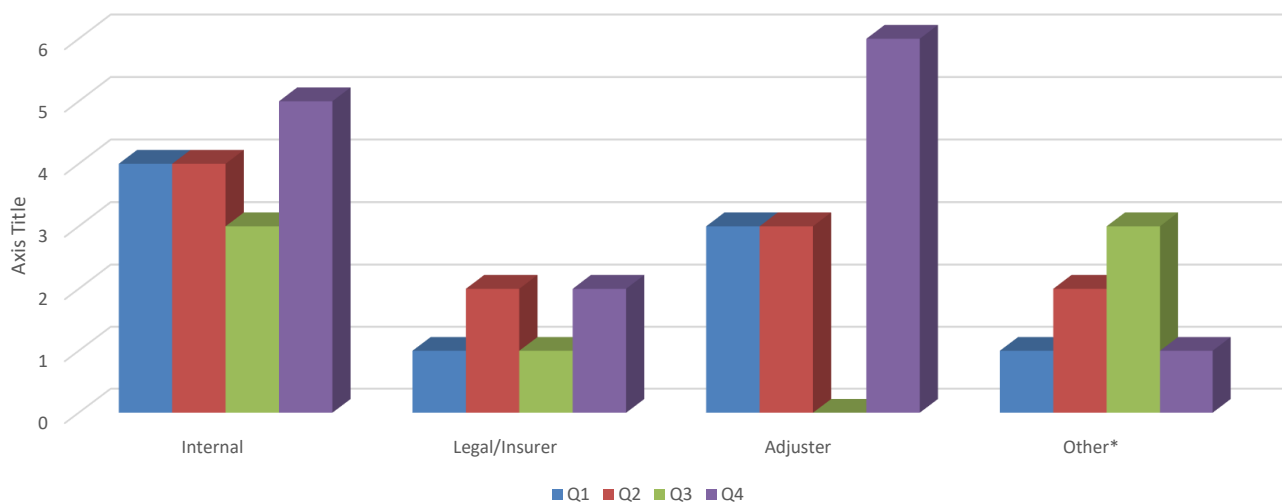


Haldimand County							
2020 Insurance Loss Experience - Total Number of Claims							
Dept./Division Affected	Q1	Q2	Q3	Q4	2018 YTD	2019 YTD	2020 YTD
Building & Municipal Enforcement	0	1	0	0	6	0	1
Comm. Dev. & Partnerships	0	0	0	0	0	1	0
Corporate & Social Services	0	0	0	0	3	0	0
Council & Mayor's Office	1	0	0	0	0	1	1
Economic Dev. & Tourism	0	0	0	0	0	0	0
Emergency Services	0	0	1	0	0	2	1
Engineering Services	0	0	0	1	2	2	1
Environmental Operations	1	0	0	1	0	8	2
Fac., Parks, Cemeteries & Forestry	1	2	1	3	5	10	7
Financial & Data Services	0	0	0	0	1	1	0
Fleet Operations	0	0	0	0	0	0	0
Grandview Lodge	0	0	0	0	0	1	0
Libraries	0	0	0	0	0	0	0
Roads Operations	4	4	2	8	22	19	18
Not County Jurisdiction/Other*	1	4	4	1	0	0	10
<b>Total</b>	<b>8</b>	<b>11</b>	<b>8</b>	<b>14</b>	<b>39</b>	<b>45</b>	<b>41</b>



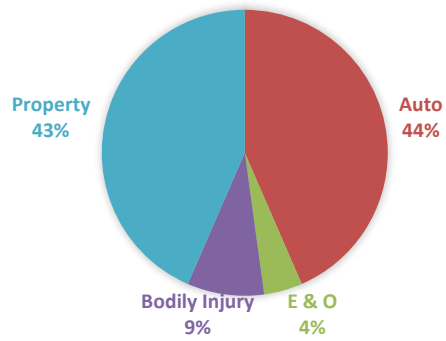
### Management of Claims - 2020



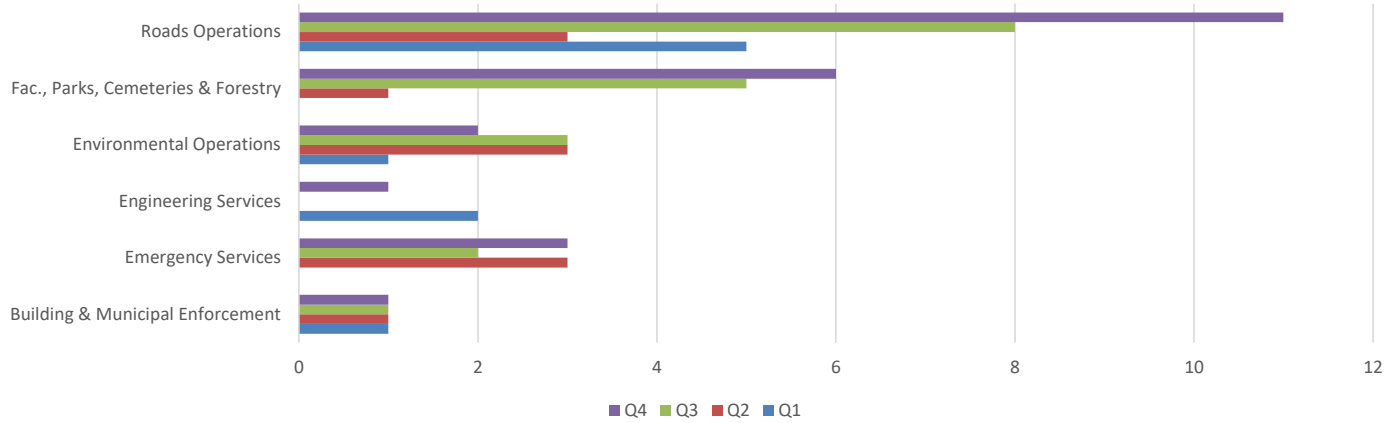
\*Third Party/Contractor Responsibility

Data showing zero values have been removed from charts

YTD - Incident Types



YTD - Incidents by Division



Data showing zero values have been removed from charts