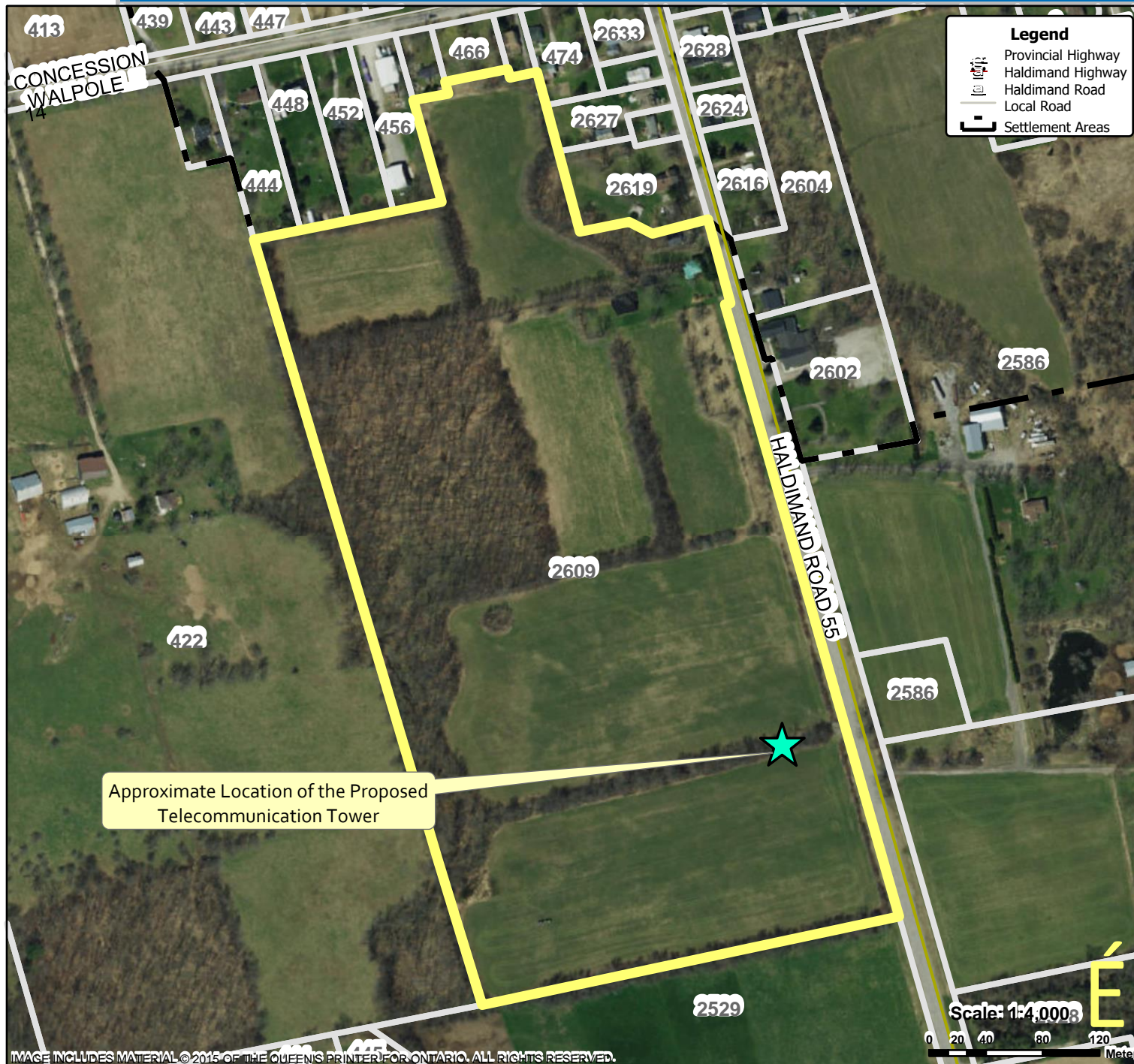


Location Map - Telecommunication Tower - 2609 Haldimand Road 55



Location:

**2609 HALDIMAND ROAD 55
GEOGRAPHIC TOWNSHIP OF WALPOLE
WARD 1**

Legal Description:

WAL CON 14 PT LOT 6 RP18R1848 PART 1

Property Assessment Number:

2810 332 006 06000 0000

Size:

41.41 Acres

HALDIMAND COUNTY, ITS EMPLOYEES, OFFICERS AND AGENTS ARE NOT RESPONSIBLE FOR ANY ERRORS, OMISSIONS OR INACCURACIES WHETHER DUE TO THEIR OWN NEGLIGENCE OR OTHERWISE. DO NOT USE FOR OPERATING MAP OR DESIGN PURPOSES. ALL INFORMATION TO BE VERIFIED.

