

## **HALDIMAND HEALTH TEAM MEMORANDUM OF UNDERSTANDING**

### Statement of Commitment

We the partner organizations of Haldimand Health Team, an emerging Ontario Health Team in development, are committed to providing high quality, fiscally responsible, integrated health care services to the residents of Haldimand County and any others who travel to our municipality for health care. We will work as one coordinated team that is centered around patients, clients, families, and care providers.

We are committed to achieving the “Quadruple Aim” of better patient and population outcomes; better patient, family and caregiver experience; better provider experience; and better value. We will work with patients, families, community members and all care providers to ensure that we are successful.

### Principles

The partner organizations of Haldimand Health Team will adhere to the following principles:

- (a) Strengthening shared leadership, teamwork and accountability across partner organizations;
- (b) Building on existing evidence-based approaches and innovative care models;
- (c) Engaging patients, clients, families, community members, and care providers to ensure an integrated continuum of care that is effective, sustainable, and achieves the Quadruple Aim;
- (d) Adopting and living Ontario’s “Patient Declaration of Values;”
- (e) Engaging and supporting primary care in such a way as to create enthusiastic participation;
- (f) Measuring performance and promoting continuous quality improvement
- (g) Communicating regularly with all stakeholders with transparency and respect;
- (h) Abiding and upholding principles and approaches to designing systems of care as defined by Ontario Health;
- (i) Providing culturally sensitive and appropriate care to diverse communities within a safe space.

### Membership

Chief Executive Officers and Executive Directors (the “Executive Leaders”) of partner organizations serve as the core group of an “Executive Leadership Team” (ELT). Consistent attendance of Executive Leaders at meetings of the ELT is required. Delegates are permitted to attend should an Executive Leader be unavailable but these delegates must have the authority to vote on behalf of their partner organization. Voting is restricted to one vote per organization in the spirit of equality. The ELT will use a consensus approach to decision-making but where consensus cannot be achieved on a timely basis a majority vote of two-thirds of Executive Leaders will be final.

The Executive Leadership Team will appoint two Executive Leaders to serve as Co-Chairs of the ELT. These two individuals will meet regularly, jointly plan meetings, and ensure that necessary work is completed. A quorum of greater than 50% of Executive Leaders is required for all meetings and a two-thirds majority vote is required for decision-making. Executive Leaders may assign a delegate to participate in and vote during a meeting.

Partner organizations as of September 2019 are as follows:

- Alzheimer Society of Brant, Haldimand, Norfolk, Hamilton, Halton
- Canadian Mental Health Association, Brant-Haldimand-Norfolk Branch
- Edgewater Gardens Long-term Care
- Haldimand Family Health Team
- Haldimand War Memorial Hospital
- Midwives of East Erie
- Thrive Group (Capability Support Services)
- True Experience Supportive Housing & Community Work Program

Other individuals who may be content matter experts, community partners, support staff from within partner organizations, etc. may attend ELT meetings as required and as agreed by Executive Leaders.

Membership is subject to change. Flexibility will be required as more information on Ontario Health Teams are provided by the Ontario Government and as Haldimand Health Team continues to develop. Where possible, the ELT will maintain a preference for stability in structure until year 1 expectations of Haldimand Health Team have been achieved. In future, organizations may be added or deleted with a majority vote of two-thirds of partner organizations.

Haldimand Health Team is inclusive and welcomes new partners and remains open to “Letters of Support” during the “Full Application Stage”. We welcome all participants who are committed to our “Principles” and committed to an Ontario Health Team and our “Defined Patient Population” based on all residents of Haldimand County.

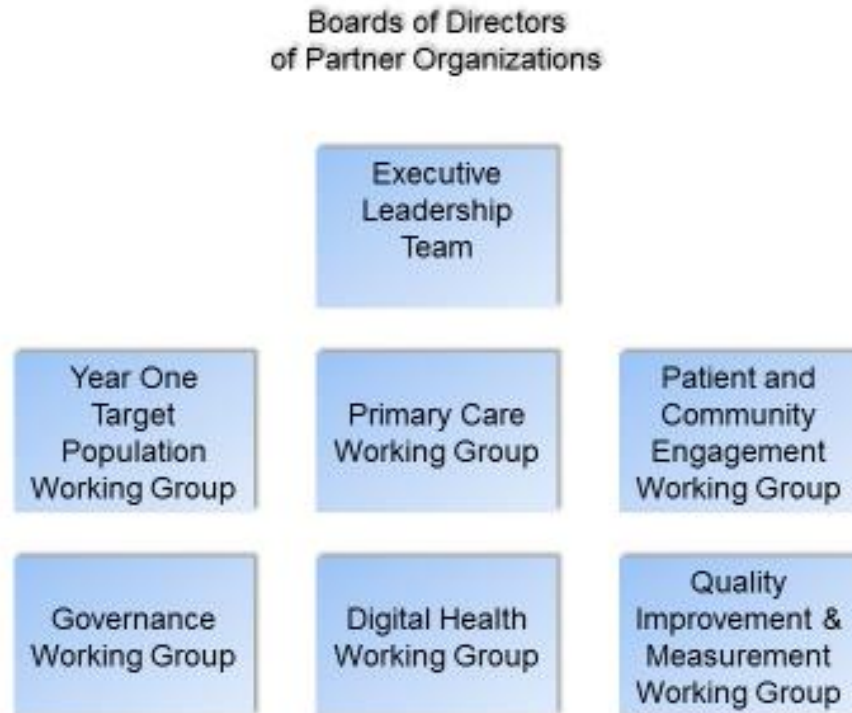
### Roles and Responsibilities

The ELT will:

- (a) Provide overall strategic direction and leadership necessary for a successful application and implementation of Haldimand Health Team;
- (b) Work collaboratively, and in accordance with the Principles, to identify solutions necessary to provide a full continuum of care;
- (c) Lead community engagement to ensure the direction of Haldimand Health Team is consistent with community needs and priorities;
- (d) To create, support, and oversee working groups necessary to fulfill the Statement of Commitment;
- (e) Jointly and equally share the available resources that are necessary to ensure the success of Haldimand Health Team;
- (f) Provide updates and obtain necessary approvals from partner Boards of Directors in a timely fashion.

### Haldimand Health Team Structure

The following is the structure of Haldimand Health Team that is designed to successfully lead us through the various phases leading to the implementation of our Ontario Health Team.



Approvals

We the undersigned Executive Leaders who represent partner organizations approve and agree to this Memorandum of Understanding in every respect.

---

Cathy Case  
General Manager - Corporate & Social Services  
Haldimand County

---

Mike Evers  
General Manager – Community & Development Services  
Haldimand County