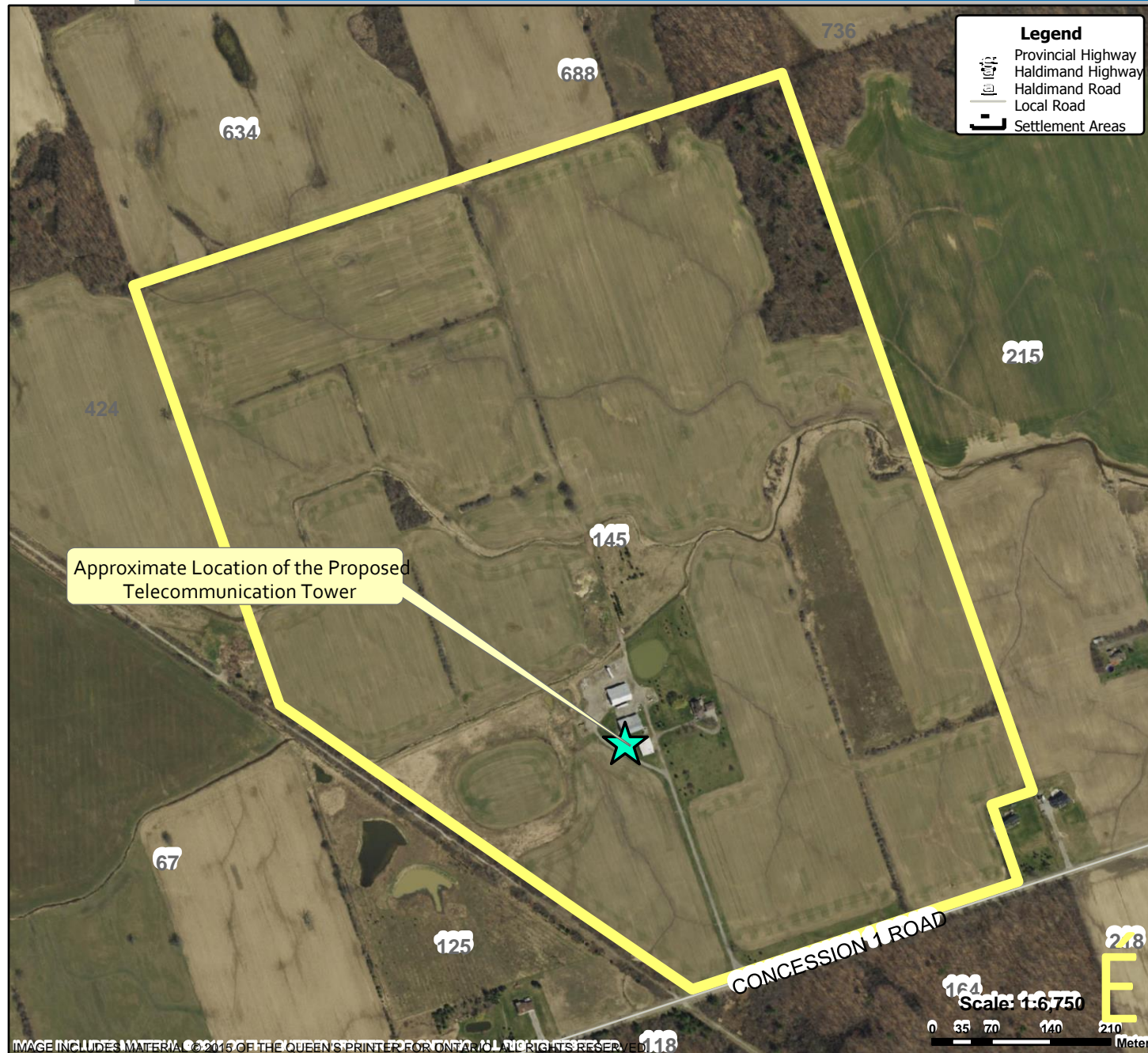


Location Map - Telecommunication Tower - 145 Concession 1 Road



Location

**145 CONCESSION 1 ROAD
GEOGRAPHIC TOWNSHIP OF SENECA
WARD 4**

Legal Description

SEN CON 2 SESC PT LOTS 15 AND 16

Property Assessment Number

2810 152 001 07700 0000

Size

178.52 Acres

HALDIMAND COUNTY, ITS EMPLOYEES, OFFICERS AND AGENTS ARE NOT RESPONSIBLE FOR ANY ERRORS, OMISSIONS OR INACCURACIES WHETHER DUE TO THEIR OWN NEGLIGENCE OR OTHERWISE. DO NOT USE FOR OPERATING MAP OR DESIGN PURPOSES. ALL INFORMATION TO BE VERIFIED.

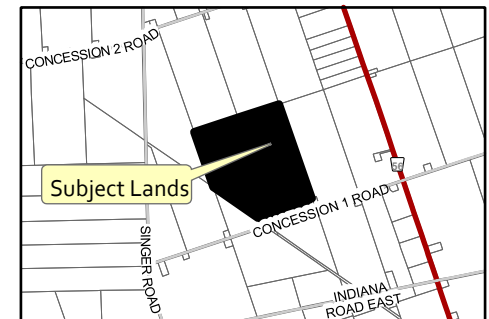


IMAGE INCLUDES MATERIAL © 2016 OF THE QUEEN'S PRINTER FOR ONTARIO. ALL RIGHTS RESERVED.