

Closed Roads In Cayuga: Proposed Outcome

LSS-07-2020, Attachment 2



**Haldimand
County**

Location:

10 & 400 HALDIMAND HWY 54, CLOSED PORTIONS OF COLBORNE, WINNIET, HEPBURN, AND WINNIET STREET
GEOGRAPHIC TOWNSHIP OF SENECA, Ward 4

Legal Description:

SEN PLAN 217 LOTS 56 TO 58 RP 18R2154 PARTS 1 & 2
SEN PLAN 217 LOTS 56 TO 58 PLAN 217 LOTS 44 TO 52
60 TO 64 77 TO 84 89 TO 98 RP 18R7191 PARTS 1 TO 4

Property Assessment Number:

2810 152 002 06150 00000 & 2810 152 002 06100 0000

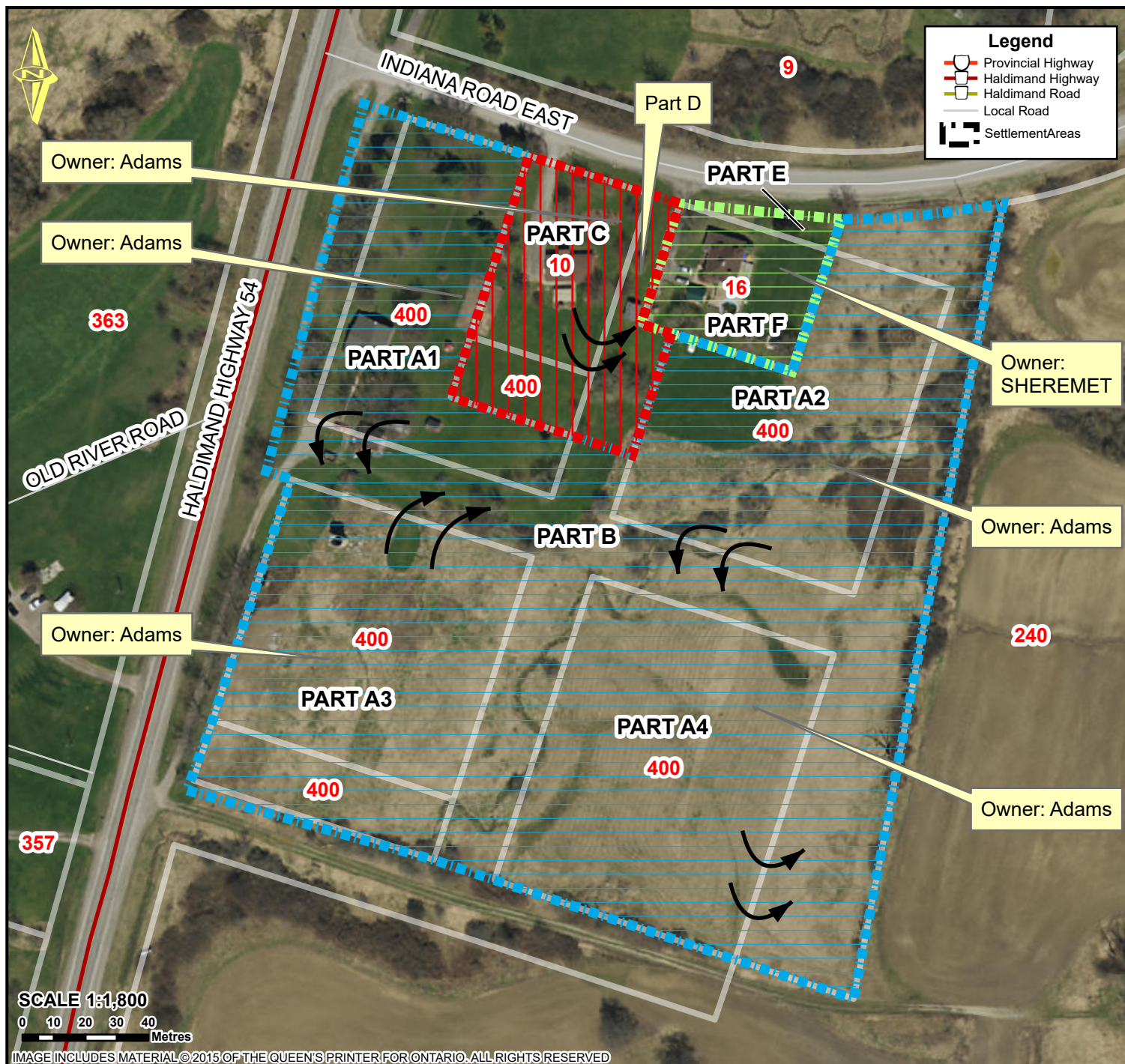
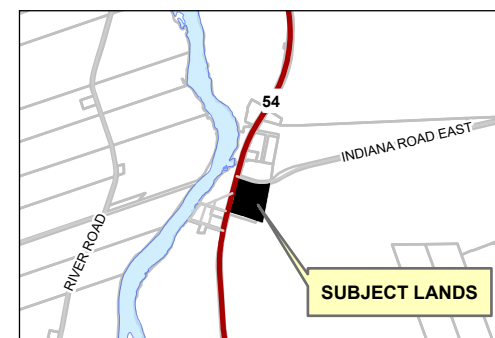
Size:

0.60 Acres, Approximately 6.45 Acres,
Approximately 3.50 Acres, & Approximately 0.30 Acres

Zoning:

A (Agriculture)

HALDIMAND COUNTY, ITS EMPLOYEES, OFFICERS AND AGENTS ARE NOT RESPONSIBLE FOR ANY ERRORS, OMISSIONS OR INACCURACIES WHETHER DUE TO THEIR OWN NEGLIGENCE OR OTHERWISE. DO NOT USE FOR OPERATING MAP OR DESIGN PURPOSES. ALL INFORMATION TO BE VERIFIED.



SCALE 1:1,800

0 10 20 30 40
Metres

IMAGE INCLUDES MATERIAL © 2015 OF THE QUEEN'S PRINTER FOR ONTARIO. ALL RIGHTS RESERVED

PREPARED BY HALDIMAND COUNTY PLANNING & ECONOMIC DEVELOPMENT DEPARTMENT,
GIS & GRAPHICS SECTION. Feb 2020

P:\REQUEST\GIS\Tickets\Ticket1430\ClosedRoads2020\ClosedRoads2020.aprx