

**Location Map FILE #PL28T-2019-007 & PLZ-HA-2019-010
 APPLICANT: Black Tower Investments Ltd.**

PDD-33-2019, Attachment 1



Location:
 ERIE AVENUE NORTH
 GEOGRAPHIC TOWNSHIP OF RAINHAM
 WARD 2

Legal Description:
 RNH CON 5 PT LOT 6

Property Assessment Number:
 2810 158 003 10200 0000

Size:
 Approximately 72.66 Acres

Zoning:
 A (Agricultural) & CHA (Hamlet Commercial)

HALDIMAND COUNTY, ITS EMPLOYEES, OFFICERS AND AGENTS ARE NOT RESPONSIBLE FOR ANY ERRORS, OMISSIONS OR INACCURACIES WHETHER DUE TO THEIR OWN NEGLIGENCE OR OTHERWISE. DO NOT USE FOR OPERATING MAP OR DESIGN PURPOSES. ALL INFORMATION TO BE VERIFIED.

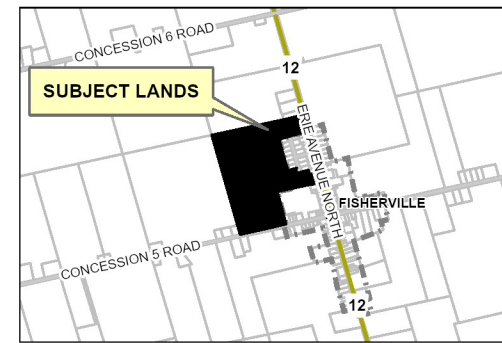


IMAGE INCLUDES MATERIAL © 2015 OF THE QUEEN'S PRINTER FOR ONTARIO. ALL RIGHTS RESERVED