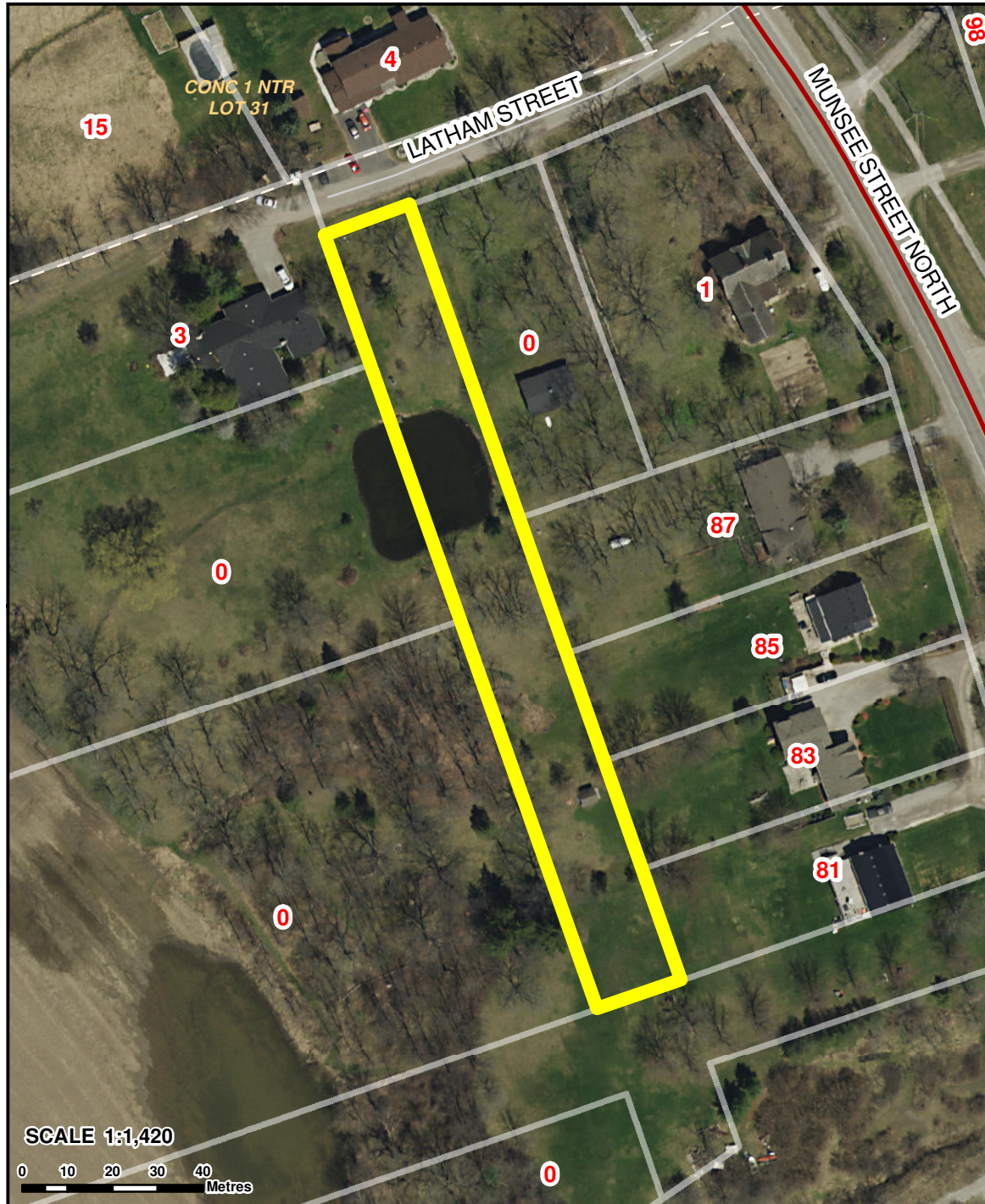


# SURPLUS PROPERTY



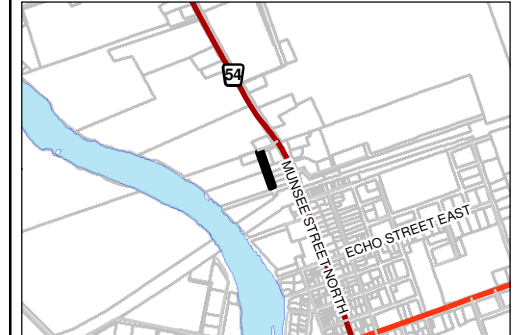
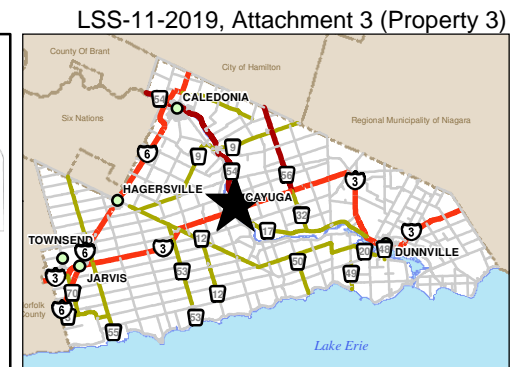
## Legend

- Provincial Highway
- Haldimand Highway
- Haldimand Road
- Local Road

- Surplus Lands
- Surplus Lands
- Surplus Lands

The aerial photos were taken in the Spring of 2015. The boundary may not line up exactly with the photo and it may be a current representation as shown in the image. Photographs are for convenience only. The municipality cannot guarantee accuracy.

Includes material © 2015 of the Queen's Printer for Ontario. All rights reserved.



## Location:

**Ottawa St, Cayuga, Closed between Indian St and Latham St**

## Description:

**Vacant Land, PIN #38224-0243(LT)**

## Lot Size:

**0.89 Acres**

## Current Zoning:

**R1, Urban Residential Type 1**

## MPAC Assessment:

## Roll Number: