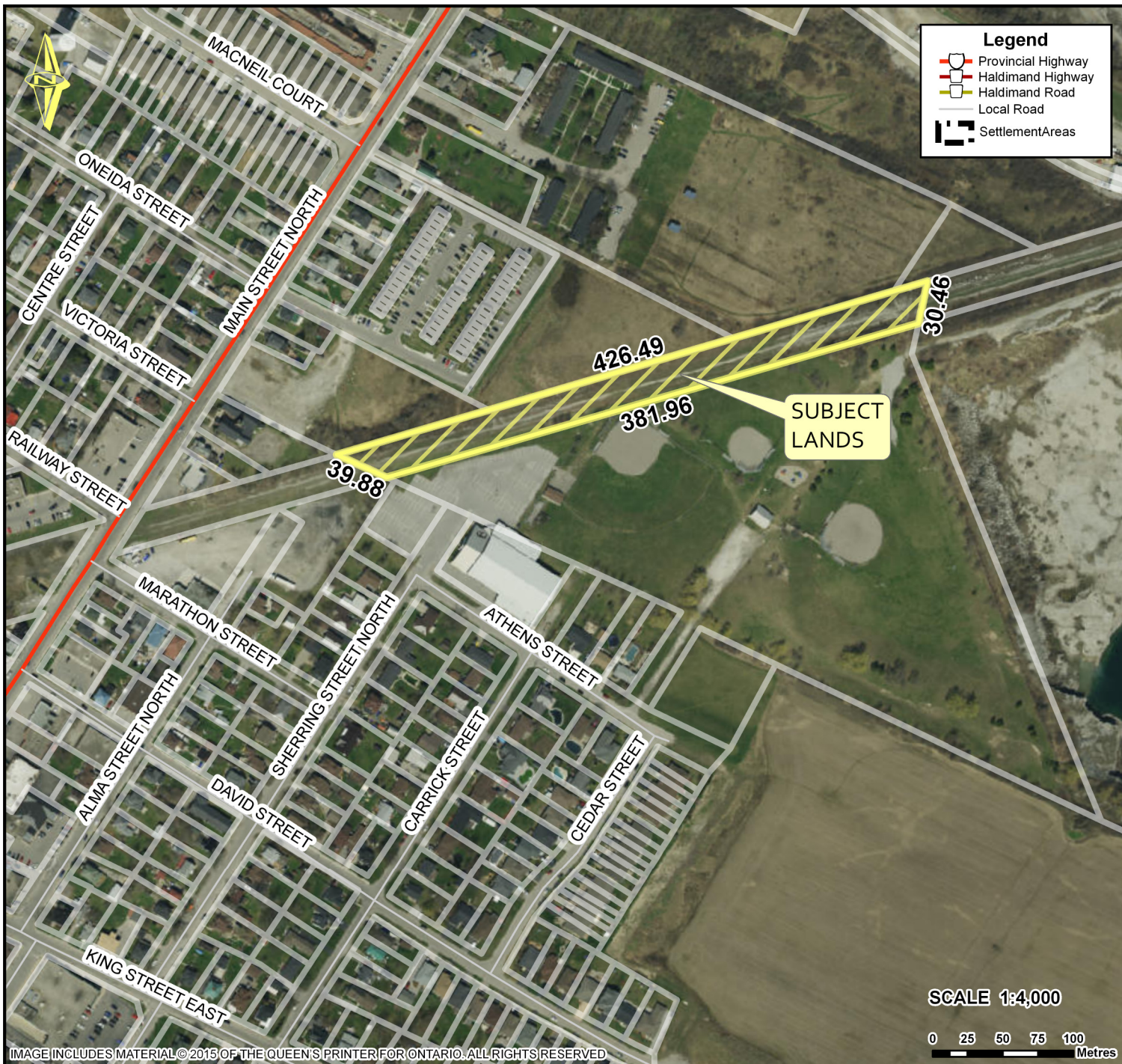


Former Rail Line in Hagersville

LSS-12-2019, Attachment 1



Location:

URBAN AREA OF HAGERSVILLE

Legal Description:

**PIN # 38183-0511 (LT)
Part of Block 46, Plan 905;
Part Lot 29 East of Plank Road Oneida,
Part 3 on 18R-6353 and Part 1 on 18R-6234**

Size:

2.60 Acres

Zoning:

IC (Community Institutional)

HALDIMAND COUNTY, ITS EMPLOYEES, OFFICERS AND AGENTS ARE NOT RESPONSIBLE FOR ANY ERRORS, OMISSIONS OR INACCURACIES WHETHER DUE TO THEIR OWN NEGLIGENCE OR OTHERWISE. DO NOT USE FOR OPERATING MAP OR DESIGN PURPOSES. ALL INFORMATION TO BE VERIFIED.

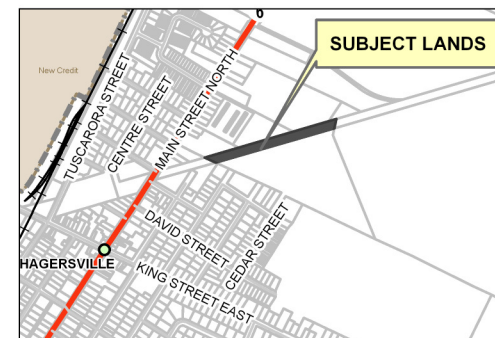


IMAGE INCLUDES MATERIAL © 2015 OF THE QUEEN'S PRINTER FOR ONTARIO. ALL RIGHTS RESERVED

PREPARED BY HALDIMAND COUNTY PLANNING & ECONOMIC DEVELOPMENT DEPARTMENT, GIS & GRAPHICS SECTION, Mar 2019

P:\REQUEST\GIS\Tickets\Ticket2192\FormerRailLine\FormerRailLine.aprx