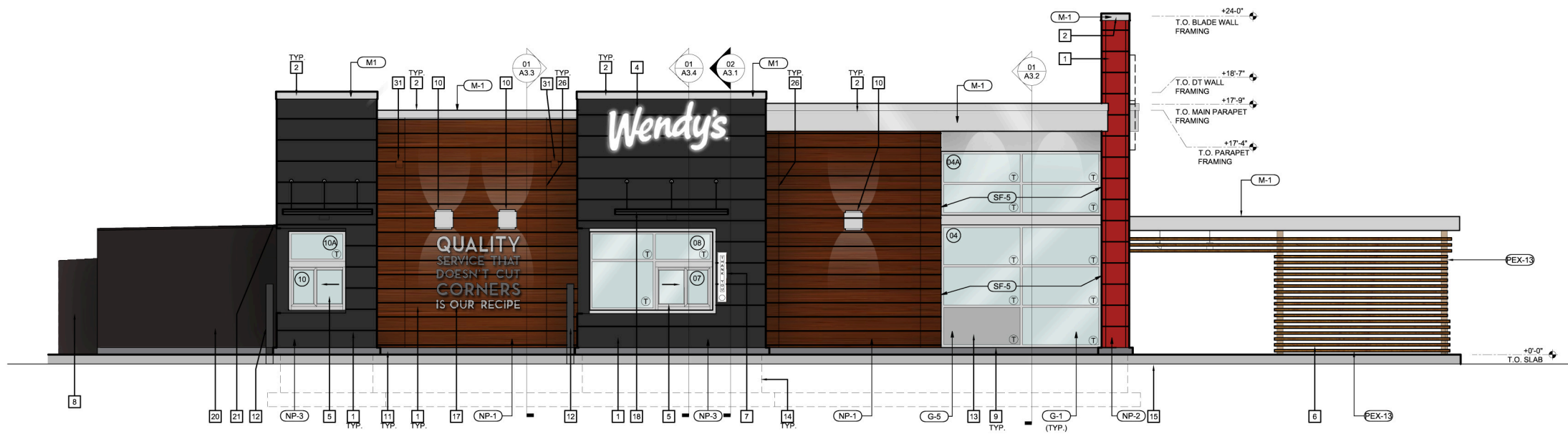


**01 RIGHT ELEVATION**  
SCALE: 1/4" = 1'-0"



**02 LEFT ELEVATION**  
SCALE: 1/4" = 1'-0"

**EXTERIOR ELEVATION NOTES**

- 1 VICWEST EXTERIOR CLADDING PANEL SYSTEM. REFER TO A6 FINISH SCHEDULE FOR SIZE AND COLOUR.
- 2 PREFINISHED METAL PARAPET CAP W/ DRIP EDGE (BEYOND). ENSURE METAL FLASHING OVER LAP 6" MIN. ON VICWEST FINISHES.
- 3 ACCESS HATCH AND VENTS FOR BLADE WALL SUPPLIED AND INSTALLED BY G.C. REFER TO DETAIL 08/A4.4 FOR SPEC.
- 4 WENDY'S ILLUMINATED SIGNAGE (WHITE LETTERS) TO BE PROVIDED AND INSTALLED BY SIGNAGE SUPPLIER. G.C. TO PROVIDE WOOD BLOCKING, FINAL ELEC. CONNECTION AND PLATFORM SERVING TRANSFORMER. CONFIRM SIGNAGE SIZES, STYLE, MOUNTING HEIGHT AND LOCATION W/ APPROVED SIGNAGE DWGS.
- 5 NEW DRIVE-THRU PICK UP WINDOW. REFER TO WINDOW SCHEDULE ON DRAWING A6.3.
- 6 N/A.
- 7 NEW "THANK YOU" SIGN. SUPPLIED AND INSTALLED BY SIGN SUPPLIER.
- 8 CO2 TANKS CAGE. REFER TO MECHANICAL DRAWINGS.
- 9 PROVIDED ANODIZED ALUMINUM FRAME. REFER TO SHEET A6.3 FOR WINDOW SCHEDULE.
- 10 WALL MOUNTED LIGHT. REFER TO ELECTRICAL DRAWINGS. (TYP.) LIGHT FIXTURE MOUNTED TO RECESSED JUNCTION BOX. COLOUR TO BE CLEAR ANODIZED.
- 11 EXPOSED CUSTOM 6" CONCRETE BLOCK. REFER TO STRUCTURAL DRAWINGS.
- 12 NEW CONCRETE FILLED BOLLARD C/W PLASTIC SLEEVE PROVIDED AND INSTALLED BY G.C. REFER TO DETAIL 3/A52.1 AND GENERAL NOTES.
- 13 FROSTED GLASS (G-5) AT BOTTOM PANE OF GLAZING SYSTEM. PLACE ON INSIDE FACE OF GLASS. SUPPLIED AND INSTALLED BY G.C.
- 14 FOUNDATION WALL AND FOOTING. REFER TO STRUCTURAL DRAWINGS FOR SIZES AND DEPTH.
- 15 CONCRETE SIDEWALK. REFER TO SHEET A5.1 FOR SITE PLAN.
- 16 SECURITY GATE. REFER TO DETAIL 13/A4.4.
- 17 WENDY'S NON-ILLUMINATED SIGNAGE TO BE SUPPLIED BY OWNER AND INSTALL BY G.C. G.C. TO PROVIDE WOOD BLOCKING BEHIND VICWEST PRODUCT (REFER TO VICWEST INSTALLATION GUIDE). CONFIRM SIGNAGE SIZES, STYLE, MOUNTING HEIGHT AND LOCATION W/ APPROVED SIGNAGE DWGS.
- 18 PRE-ENGINEERED DRIVE-THRU CANOPY SUPPLIED BY OWNER AND INSTALLED BY G.C.
- 19 DOOR HARDWARE TO BE INCLUDED WITH WALK-IN COOLER/FREEZER BOX. REFER TO DOOR SCHEDULE ON SHEET A6.3.
- 20 PANELIZED COOLER/ FREEZER/ STORAGE MODULE TO BE SUPPLIED AND INSTALLED BY OWNER.
- 21 METAL FLASHING TO MATCH COOLER/ FREEZER/ STORAGE MODULE.
- 22 LIGHT FIXTURE TO CENTER ON DOOR OPENING. REFER TO ELECTRICAL DRAWINGS.
- 23 BARRIER FREE POWER DOOR OPERATORS. MOUNTING HEIGHT OF 3'-0" MIN. TO 3'-6" MAX. A.F.F. CENTERLINE.
- 24 ROOF LADDER C/W LADDER COVER. REFER TO DETAIL ON A4.4.
- 25 BRAKE METAL PANELS (M-1). REFER TO FINISHES SCHEDULE.
- 26 EXPANSION JOINT. REFER TO VICWEST MANUFACTURER SPEC.
- 27 REMOTE SUCTION FOR GREASE INTERCEPTOR. REFER TO MECHANICAL DRAWINGS.
- 28 ILLUMINATED CORNICE W/ LED DOWNLIGHTS BY SIGN SUPPLIER.
- 29 ILLUMINATED RACEWAY W/ LED DOWNLIGHTS PROVIDED BY SIGN SUPPLIER.
- 30 END OF ILLUMINATED RACEWAY W/ LED DOWNLIGHTS TO BE CLOSED ON EACH END AS INDICATED. PROVIDED BY SIGN SUPPLIER.
- 31 OVERFLOW SCUPPER. REFER TO DETAIL 10/A4.4.

**EXTERIOR FINISHES  
LEGEND**

- NOTE: REFER TO SHEET A6.1 FOR SPECIFICATIONS OF EXTERIOR MATERIALS AND FINISHES.
- (BL-1) PLASTIC BOLLARD SLEEVE (YELLOW)
  - (NP-1) VICWEST EXTERIOR CLADDING SYSTEM (AD300R - FINISH : 18-9875 DARK CEDAR PVDF)
  - (NP-2) VICWEST EXTERIOR CLADDING SYSTEM (AD300SR - FINISH : 56084 DARK RED WXL)
  - (NP-3) VICWEST EXTERIOR CLADDING SYSTEM (AD300SR - FINISH : 56072 CHARCOAL WXL)
  - (M-1) PARAPET CAP AND BRAKE METAL PANEL (ANODIC CLEAR)
  - (SF-5) ALUMINUM STOREFRONT SYSTEM
  - (G-1) 1" INSULATED GLASS
  - (G-5) 1" INSULATED FROSTED GLASS
  - (PEX-1) WENDY'S DARK BRONZE
  - (PEX-2) PAINT (COLOUR: WENDY'S EXTERIOR RED)
  - (PEX-6) PAINT (COLOUR: WENDY'S DARK BRONZE - COOLER BOX ONLY)
  - (PEX-13) PAINT - TAN
  - (KW-1) KNOTWOOD PRE-FINISHED ALUMINUM SIDING MATERIAL "LIGHT OAK". ALTERNATE VICWEST, COLOUR TBD.

**GENERAL NOTES:**

1. ALL PENETRATIONS THRU WALLS AND CEILINGS MUST NOT HAVE GAPS MORE THAN 1/4"