

# Location Map FILE # PLOP-HA-2018-151 & PLZ-HA-2018-152 APPLICANT: Bulk

PDD-03-2019, Attachment 3



## Location:

**52 WEATHERBURN LINE  
GEOGRAPHIC TOWNSHIP OF DUNN, WARD 5**

## Legal Description:

**DUNN CON 4 AND 5 SDR PT LOTS  
19 AND 20 AND RP 18R6942  
PARTS 1 TO 3 5 7 AND 9**

## Property Assessment Number:

**2810 021 003 00250 0000**

## Size:

**Approximately 20.25 Acres**

## Zoning:

**A (Agricultural) & HL (Hazard Land)**

HALDIMAND COUNTY, ITS EMPLOYEES, OFFICERS AND AGENTS ARE NOT RESPONSIBLE FOR ANY ERRORS, OMISSIONS OR INACCURACIES WHETHER DUE TO THEIR OWN NEGLIGENCE OR OTHERWISE. DO NOT USE FOR OPERATING MAP OR DESIGN PURPOSES. ALL INFORMATION TO BE VERIFIED.

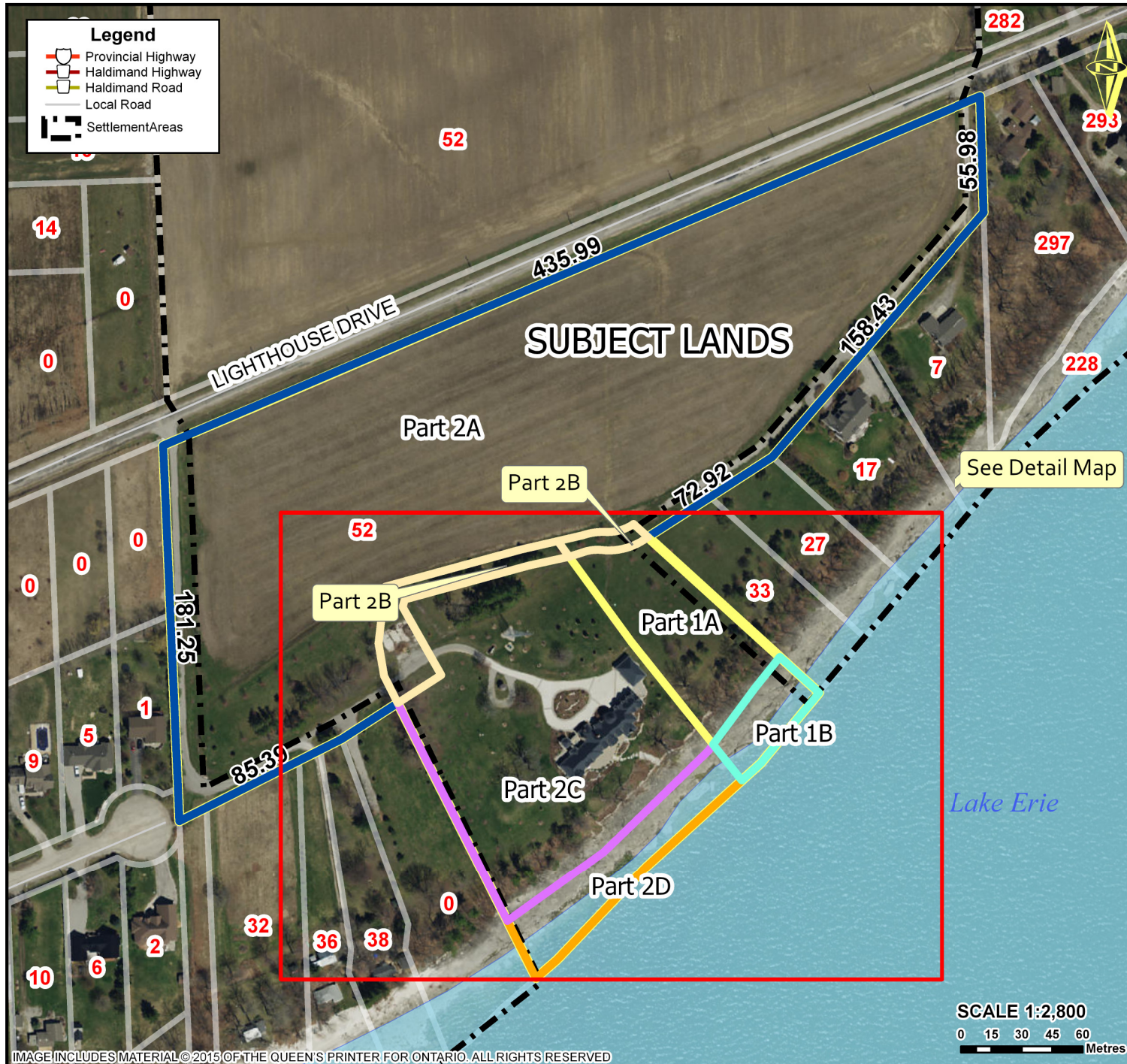
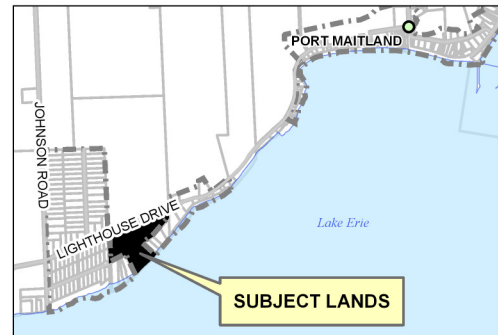


IMAGE INCLUDES MATERIAL © 2015 OF THE QUEEN'S PRINTER FOR ONTARIO. ALL RIGHTS RESERVED