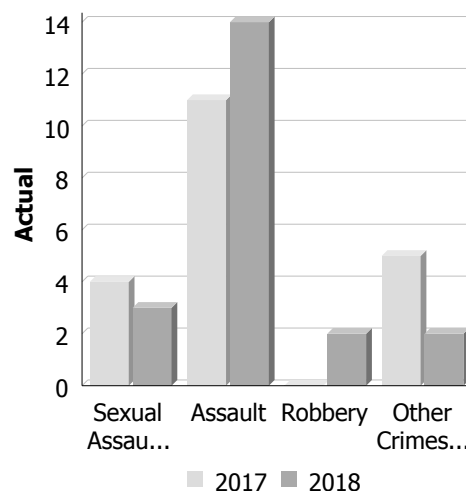


**Police Services Board Report for Haldimand County**  
**Records Management System**  
**July - 2018**

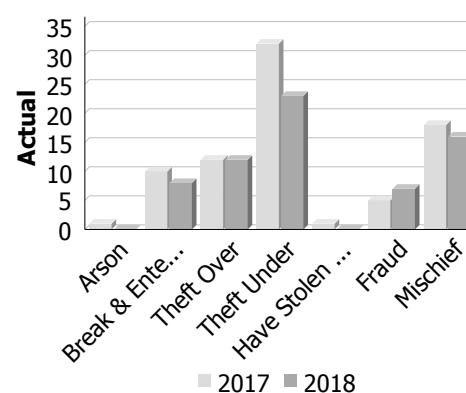
**Violent Crime**

Actual	July			Year to Date - July		
	2017	2018	% Change	2017	2018	% Change
Murder	0	0	--	0	0	--
Other Offences Causing Death	0	0	--	0	0	--
Attempted Murder	0	0	--	0	0	--
Sexual Assault	4	3	-25.0%	21	20	-4.8%
Assault	11	14	27.3%	80	76	-5.0%
Abduction	0	0	--	0	0	--
Robbery	0	2	--	2	4	100.0%
Other Crimes Against a Person	5	2	-60.0%	28	28	0.0%
<b>Total</b>	<b>20</b>	<b>21</b>	<b>5.0%</b>	<b>131</b>	<b>128</b>	<b>-2.3%</b>



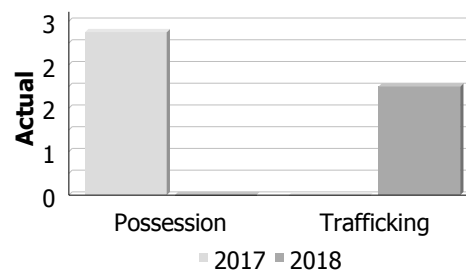
**Property Crime**

Actual	July			Year to Date - July		
	2017	2018	% Change	2017	2018	% Change
Arson	1	0	-100.0%	3	1	-66.7%
Break & Enter	10	8	-20.0%	91	54	-40.7%
Theft Over	12	12	0.0%	92	112	21.7%
Theft Under	32	23	-28.1%	184	152	-17.4%
Have Stolen Goods	1	0	-100.0%	11	12	9.1%
Fraud	5	7	40.0%	71	80	12.7%
Mischief	18	16	-11.1%	162	111	-31.5%
<b>Total</b>	<b>79</b>	<b>66</b>	<b>-16.5%</b>	<b>614</b>	<b>522</b>	<b>-15.0%</b>



**Drug Crime**

Actual	July			Year to Date - July		
	2017	2018	% Change	2017	2018	% Change
Possession	3	0	-100.0%	37	12	-67.6%
Trafficking	0	2	--	5	7	40.0%
Importation and Production	0	0	--	0	1	--
<b>Total</b>	<b>3</b>	<b>2</b>	<b>-33.3%</b>	<b>42</b>	<b>20</b>	<b>-52.4%</b>



**Clearance Rate**

**Detachment:** 6C - HALDIMAND COUNTY  
**Location code(s):** 6C00 - HALDIMAND COUNTY

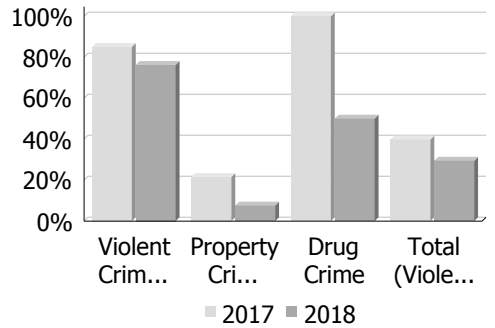
**Data source date:**  
2018/08/11

**Report Generated by:**  
Robins, James

**Report Generated on:**  
Aug 13, 2018 9:34:14 AM  
PP-CSC-Operational Planning-4300

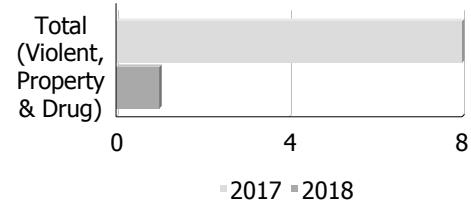
**Police Services Board Report for Haldimand County**  
**Records Management System**  
**July - 2018**

Clearance Rate	July			Year to Date - July		
	2017	2018	Difference	2017	2018	Difference
Violent Crime	85.0%	76.2%	-8.8%	92.4%	82.8%	-9.6%
Property Crime	21.5%	7.6%	-13.9%	18.6%	15.9%	-2.7%
Drug Crime	100.0%	50.0%	-50.0%	83.3%	80.0%	-3.3%
<b>Total (Violent, Property &amp; Drug)</b>	<b>39.8%</b>	<b>29.5%</b>	<b>-10.3%</b>	<b>36.6%</b>	<b>33.0%</b>	<b>-3.6%</b>



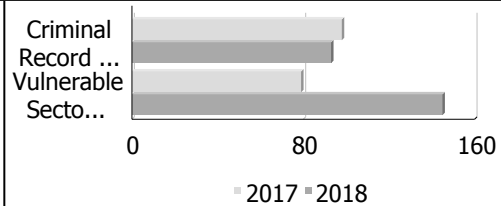
### Unfounded

Unfounded	July			Year to Date - July		
	2017	2018	% Change	2017	2018	% Change
Total (Violent, Property & Drug)	8	1	-87.5%	42	19	-54.8%



### Criminal Record and Vulnerable Sector Screening Checks

Actual	July			Year to Date - July		
	2017	2018	% Change	2017	2018	% Change
Criminal Record Checks	98	93	-5.1%	1,235	760	-38.5%
Vulnerable Sector Screening Checks	79	145	83.5%	241	937	288.8%



Data contained within this report is dynamic in nature and numbers will change over time as the Ontario Provincial Police continue to investigate and solve crime.

#### Data Utilized

- Major Crimes
- Niche RMS All Offence Level Business Intelligence Cube

**Detachment:** 6C - HALDIMAND COUNTY

**Location code(s):** 6C00 - HALDIMAND COUNTY

**Data source date:**

2018/08/11

**Report Generated by:**

Robins, James

**Report Generated on:**

Aug 13, 2018 9:34:14 AM

PP-CSC-Operational Planning-4300

**Police Services Board Report for Haldimand County  
2018/Jul**

<b>Public Complaints</b>	
Policy	0
Service	0
Conduct	0

**Date information collected from Professional Standards Bureau Commander Reports:** 2018-08-13

**Data Source**

Ontario Provincial Police, Professional Standards Bureau Commander Reports

- Includes all public policy, service and conduct complaints submitted to the Office of the Independent Police Review Director (OIPRD)

<b>Secondary Employment</b>
-----------------------------

<b>Intelligence Led Policing - Crime Abatement Strategy</b>	
Number of Offenders in Program	6
Number of Offenders Charged	0
Number of Charges Laid	0
Number of Checks Performed	3

**Date information was collected from Records Management System:** 2018-08-13

<b>Daily Activity Reporting Patrol Hours</b>	
<b>Total Hours</b>	<b>2018/Jul</b>
Number of Cruiser Patrol Hours	289.25
Number of Motorcycle Patrol Hours	2.00
Number of Marine Patrol Hours	188.25
Number of ATV Patrol Hours	0.00
Number of Snowmobile Patrol Hours	0.00
Number of Bicycle Patrol Hours	0.00
Number of Foot Patrol Hours	74.50
Number of School Patrol Hours	0.00

**Data source (Daily Activity Reporting System) date:** 2018/08/16

**Detachment:** 6C - HALDIMAND COUNTY

**Location code(s):** 6C00 - HALDIMAND COUNTY

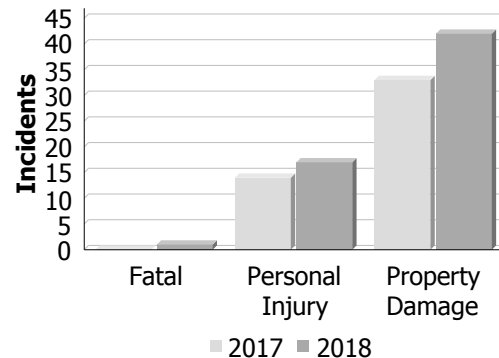
**Report Generated by:**  
Robins, James

**Report Generated on:**  
Aug 13, 2018 9:25:27 AM  
PP-CSC-Operational Planning-4300

**Police Services Board Report for Haldimand County**  
**Collision Reporting System**  
**July - 2018**

**Motor Vehicle Collisions by Type**

Incidents	July			Year to Date - July		
	2017	2018	% Change	2017	2018	% Change
Fatal	0	1	--	5	5	0.0%
Personal Injury	14	17	21.4%	85	85	0.0%
Property Damage	33	42	27.3%	282	345	22.3%
<b>Total</b>	<b>47</b>	<b>60</b>	<b>27.7%</b>	<b>372</b>	<b>435</b>	<b>16.9%</b>



**Fatalities in Detachment Area**

Incidents		July			Year to Date - July		
		2017	2018	% Change	2017	2018	% Change
Motor Vehicle Collision	Fatal Incidents	0	1	--	5	5	0.0%
	Alcohol Related	0	0	--	1	0	-100.0%
Off-Road Vehicle	Fatal Incidents	0	0	--	0	0	--
	Alcohol Related	0	0	--	0	0	--
Motorized Snow Vehicle	Fatal Incidents	0	0	--	0	0	--
	Alcohol Related	0	0	--	0	0	--

Persons Killed	July			Year to Date - July		
	2017	2018	% Change	2017	2018	% Change
Motor Vehicle Collision	0	1	--	7	5	-28.6%
Off-Road Vehicle	0	0	--	0	0	--
Motorized Snow Vehicle	0	0	--	0	0	--

**Detachment:** 6C - HALDIMAND COUNTY  
**Location code(s):** 6C00-HALDIMAND COUNTY

**Data source date:** 2018/08/12  
**Report Generated by:** Robins, James

**Report Generated on:**  
Aug 13, 2018 9:30:33 AM  
PP-CSC-Operational Planning-4300

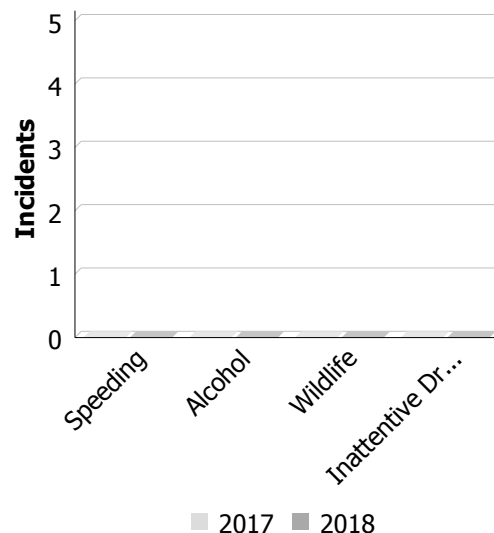
**Police Services Board Report for Haldimand County**  
**Collision Reporting System**  
**July - 2018**

**Primary Causal Factors in Fatal Motor Vehicle Collisions**

Incidents	July			Year to Date - July		
	2017	2018	% Change	2017	2018	% Change
Speeding as a contributing factor	0	0	0	1	0	-100.00%
Where alcohol is involved	0	0	0	0	0	0
Wildlife as a contributing factor	0	0	0	0	0	0
Inattentive driver as a contributing factor	0	0	0	1	1	0.00%

Persons Killed	July			Year to Date - July		
	2017	2018	% Change	2017	2018	% Change
Seatbelt as a contributing factor	0	0	0	2	0	-100.00%



**Data Utilized**

- SQL online application reporting system – OPP CRS 2.3.09
- Collision Reporting System Business Intelligence Cube

**Detachment:** 6C - HALDIMAND COUNTY

**Location code(s):** 6C00-HALDIMAND COUNTY

**Data source date:**  
2018/08/12

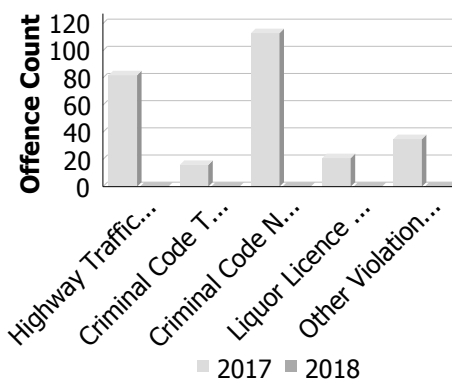
**Report Generated by:**  
Robins, James

**Report Generated on:**  
Aug 13, 2018 9:30:33 AM  
PP-CSC-Operational Planning-4300

**Police Services Board Report for Haldimand County**  
**Integrated Court Offence Network**  
**July - 2018**

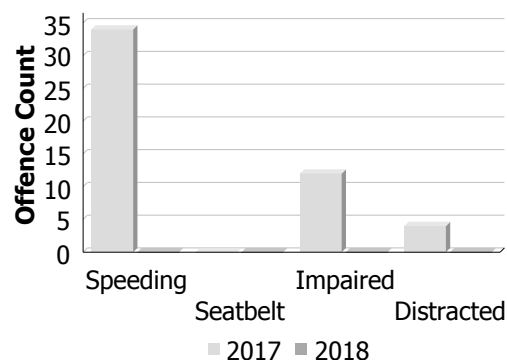
**Criminal Code and Provincial Statute Charges Laid**

Offence Count	July			Year to Date - July		
	2017	2018	% Change	2017	2018	% Change
Highway Traffic Act	82	0	-100.0%	926	1,188	28.3%
Criminal Code Traffic	16	0	-100.0%	74	45	-39.2%
Criminal Code Non-Traffic	113	0	-100.0%	597	245	-59.0%
Liquor Licence Act	21	0	-100.0%	57	47	-17.5%
Other Violations	35	0	-100.0%	245	162	-33.9%
<b>All Violations</b>	<b>267</b>	<b>0</b>	<b>-100.0%</b>	<b>1,899</b>	<b>1,687</b>	<b>-11.2%</b>



**Traffic Related Charges**

Offence Count	July			Year to Date - July		
	2017	2018	% Change	2017	2018	% Change
Speeding	34	0	-100.0%	369	586	58.8%
Seatbelt	0	0	--	34	43	26.5%
Impaired	12	0	-100.0%	51	28	-45.1%
Distracted	4	0	-100.0%	39	39	0.0%



Integrated Court Offence Network data is updated on a monthly basis: Data could be as much as a month and a half behind.

**Data Utilized**

- Ministry of Attorney General, Integrated Court Offence Network
- Integrated Court Offence Network Charge Business Intelligence Cube

**Detachment:** 6C - HALDIMAND COUNTY

**Location code(s):** 6C00 - HALDIMAND COUNTY

**Data source date:**  
Jul 17, 2018 1:40:46 PM

**Report Generated by:**  
Robins, James

**Report Generated on:**  
Aug 13, 2018 9:33:01 AM  
PP-CSC-Operational Planning-4300

## 2018 - Foot Patrol Hours - Haldimand County



2018	Caledonia	Cayuga	Dunnville	Hagersville	Jarvis	Selkirk	Provincial Parks	Total
January	16.25	41.25	49.25	6	2.5	5.25	1	121.5
February	7	26	38.5	12.25	1.25	2	0	87
March	13.25	14.5	40	13	2.5	2.25	0	85.5
April	10	11.25	37.75	15.75	1.75	3	0	79.5
May	7.25	20	39.25	6.25	1.5	2	1	77.25
June	5.25	6.75	31.5	8.25	3.75	2.5	3	61
July	6.25	18	30.75	12.5	1.25	2.75	3	74.5