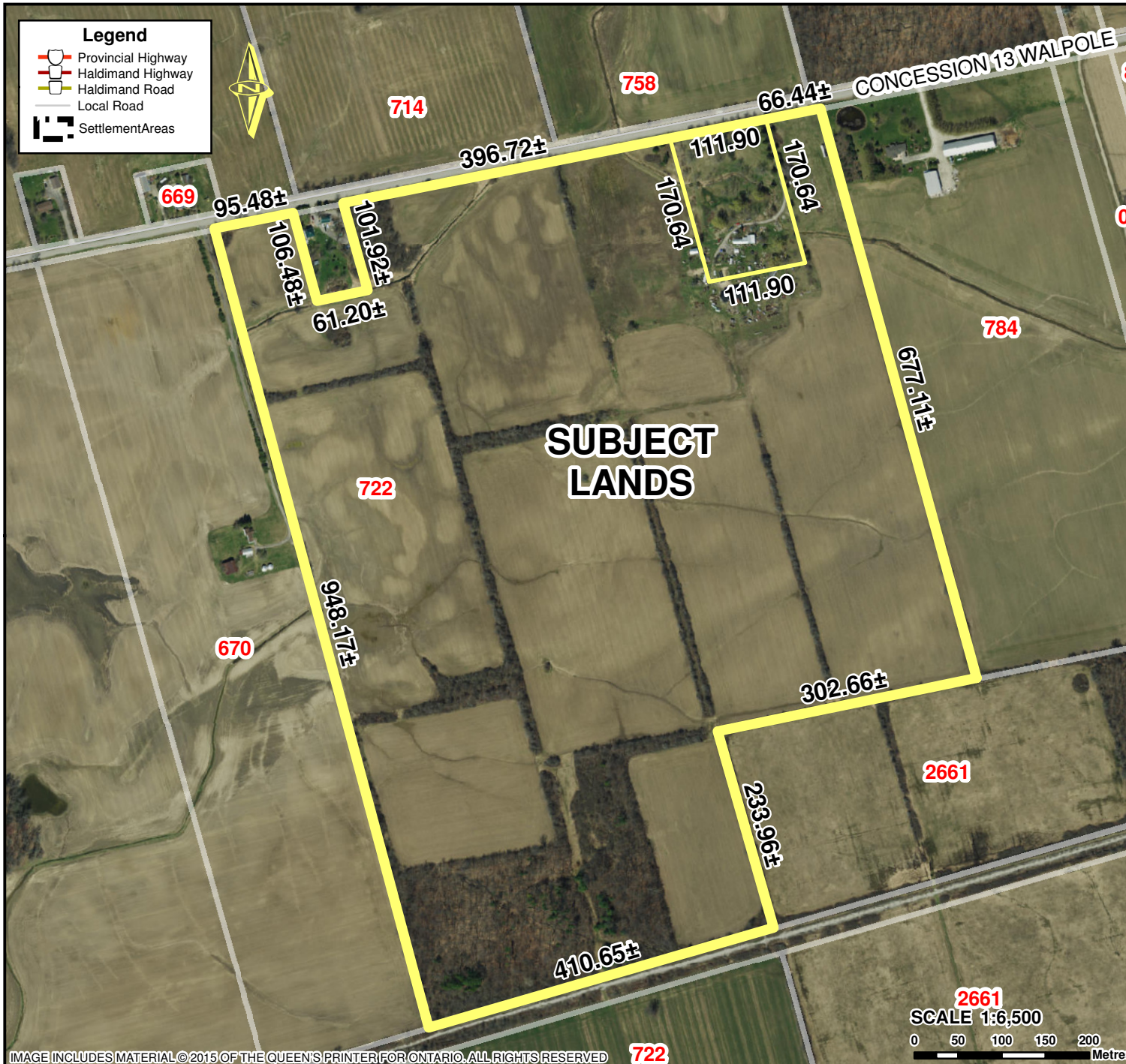


Location Map FILE # PLZ-2018-055 APPLICANT: Mattice

PED-PD-32-2018, Attachment 1



Location:

**722 CONCESSION 13 WALPOLE
GEOGRAPHIC TOWNSHIP OF
WALPOLE, WARD 1**

Legal Description:

WAL CON 13 PT LOT 9 PT LOT 10

Property Assessment Number:

2810 332 006 01400 0000

Size:

194.34 Acres

Zoning:

A (Agriculture)

HALDIMAND COUNTY, ITS EMPLOYEES, OFFICERS AND AGENTS ARE NOT RESPONSIBLE FOR ANY ERRORS, OMISSIONS OR INACCURACIES WHETHER DUE TO THEIR OWN NEGLIGENCE OR OTHERWISE. DO NOT USE FOR OPERATING MAP OR DESIGN PURPOSES. ALL INFORMATION TO BE VERIFIED.

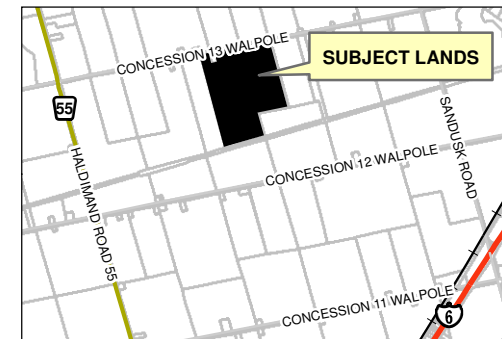


IMAGE INCLUDES MATERIAL © 2015 OF THE QUEEN'S PRINTER FOR ONTARIO. ALL RIGHTS RESERVED