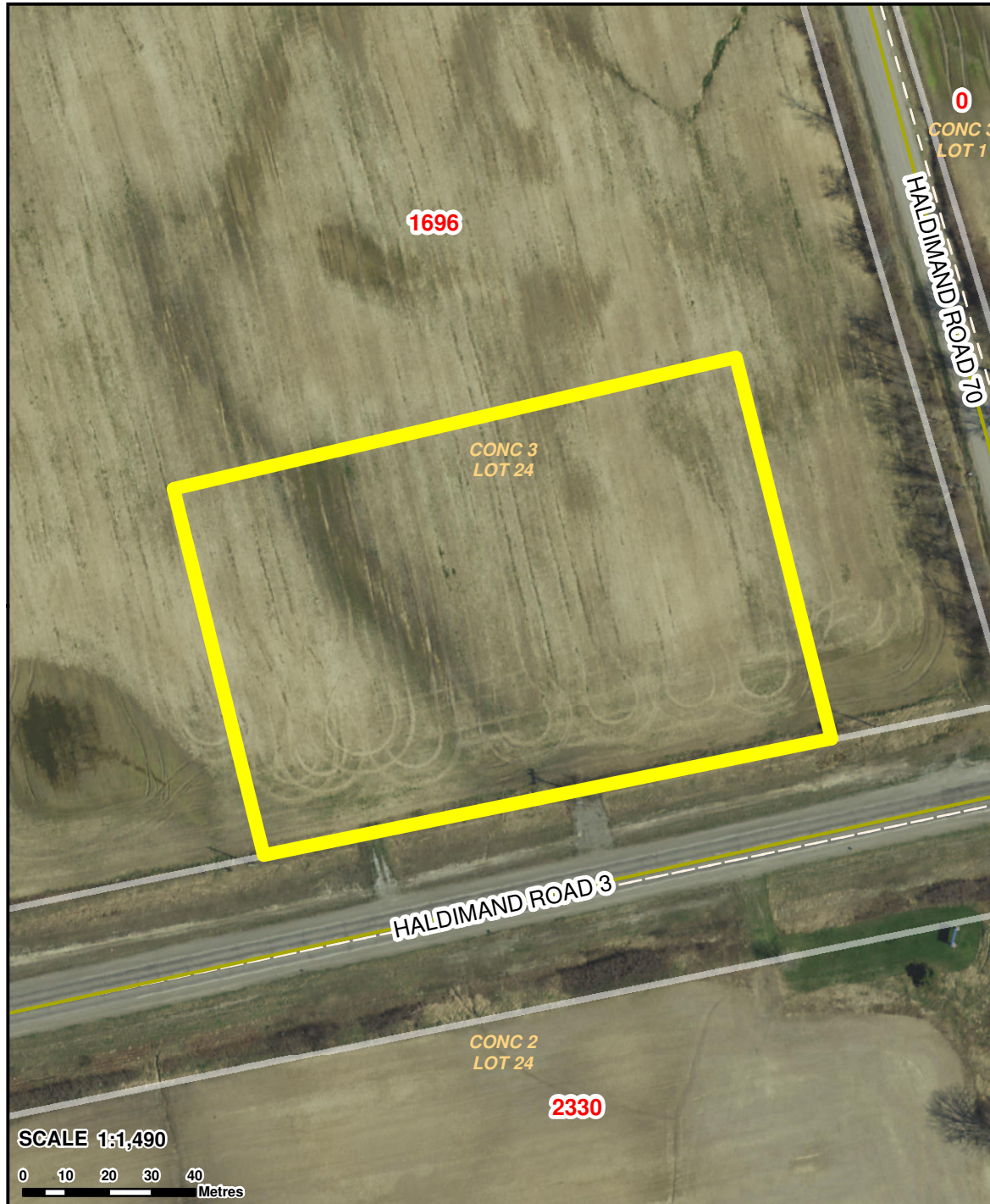


SURPLUS PROPERTY



Legend

- Provincial Highway
- Haldimand Highway
- Haldimand Road
- Local Road

- Surplus Lands
- Surplus Lands
- Surplus Lands

The aerial photos were taken in the Spring of 2015. The boundary may not line up exactly with the photo and it may be a current representation as shown in the image. Photographs are for convenience only. The municipality cannot guarantee accuracy.

Includes material © 2015 of the Queen's Printer for Ontario. All rights reserved.



Location:

Concession 3, Part Lot 24, Nanticoke

Description:

Vacant Land, PIN # 50258-0195(LT)

Lot Size:

2.94 Acres (437.56' Frontage)

Current Zoning:

MP, Prestige Industrial

MPAC Assessment:

\$70,000

Roll Number:

28-10-330-020-29500-0000