

PROTECTED A



Ontario Provincial Police

West Region

Haldimand County Detachment

72 Highway 54, Cayuga, ON, ON N0A 1E0

Tel.: 905-772-3322 Fax: 905-772-5815

Occurrence: N/A Intelligence File: 2018-222-WRDAP Date: 19-Mar-18

Analytical Report Number: 2018-222-WRDAP

Analyst: PC James Robins

Service Requested: Speed Monitoring sign location recommendations

Detachment/Unit Requesting: Sgt. Warner

Report Date: 19-Mar-2018

Executive Summary

The Following is a completed analysis of traffic complaints where the primary cause was speeding in Haldimand County between 2013 and 2017. The Analysis will assist in identifying the most efficient locations to install speed monitoring signage for the county of Haldimand.

Key Findings

Traffic complaints by area will be ranked below.

Area	Percentage of Complaints
Caledonia	15%
Dunnville Rural	14%
Selkirk and Rural	12%
Cayuga Rural	11%
Hagersville rural	10%
Hagersville	9%
Caledonia Rural	9%
Dunnville	7%
Cayuga	5%
Lakeshore	4%
Jarvis	2%
Townsend	1%

Speeding complaint areas in **Caledonia** are ranked below.

Caledonia	
Street	Percentage of complaints
Argyle N	18%
Argyle S	14%
Caithness E	8%
Orkney E	8%
Aberdeen	4%
Haddington	4%
Mcclung	4%
River	4%
Ross	4%
Scottacres	4%
Banff	2%
Braemar	2%
Caithness W	2%
Celtic	2%
Claymore	2%
Fife	2%
Hyslop	2%
Lanark	2%
Maccrae	2%
Mckenzie	2%
Stirling	2%
Wigton	2%
Williamson	2%

Speeding complaint areas in **Dunnville Rural** are ranked below.

Dunnville Rural	
Street	Percentage of complaints
Port Maitland Rd	17%
Rainham at Haldimand TL	15%
Robinson at Bartlett	12%
Road 17 at Burke	5%
Road 20 (4000 Series)	5%
Diltz Rd	5%
Northshore (1000 Series)	5%
Younge at Hines	5%
Mohawk Point	2%
Canal Bank	2%
Johnson Rd	2%
Caistorville Rd	2%
Hart Rd	2%
Derner	2%
Beckley Li	2%
Marshagen	2%
Hutchinson at Diltz	2%
Jenny Jump at Crown	2%
Niece Rd	2%
James Rd	2%

Speeding complaint areas in **Selkirk and Rural** are ranked below.

Selkirk and Rural	
Street	Percentage of complaints
Erie Av N	23%
Main St W at Erie	15%
Kohler at Irish	9%
Cheapside at Conc 4	8%
Erie Av S	6%
Road 20 at Conc 6	6%
Main St E	6%
Rainham Rd (5000 Series)	3%
Road 12 at Conc 4	3%
Decewsville at 3 Hy	3%
Road 20 at Wilson	3%
Rainham at Main	3%
Haldimand 20 at Conc 6	3%
Haldimand 20 at Kohler	3%
Road 55 at Conc 6	3%
Road 53 at Conc 4	3%
Road 12 at Irish	3%

Speeding complaint areas in **Cayuga rural** are ranked below.

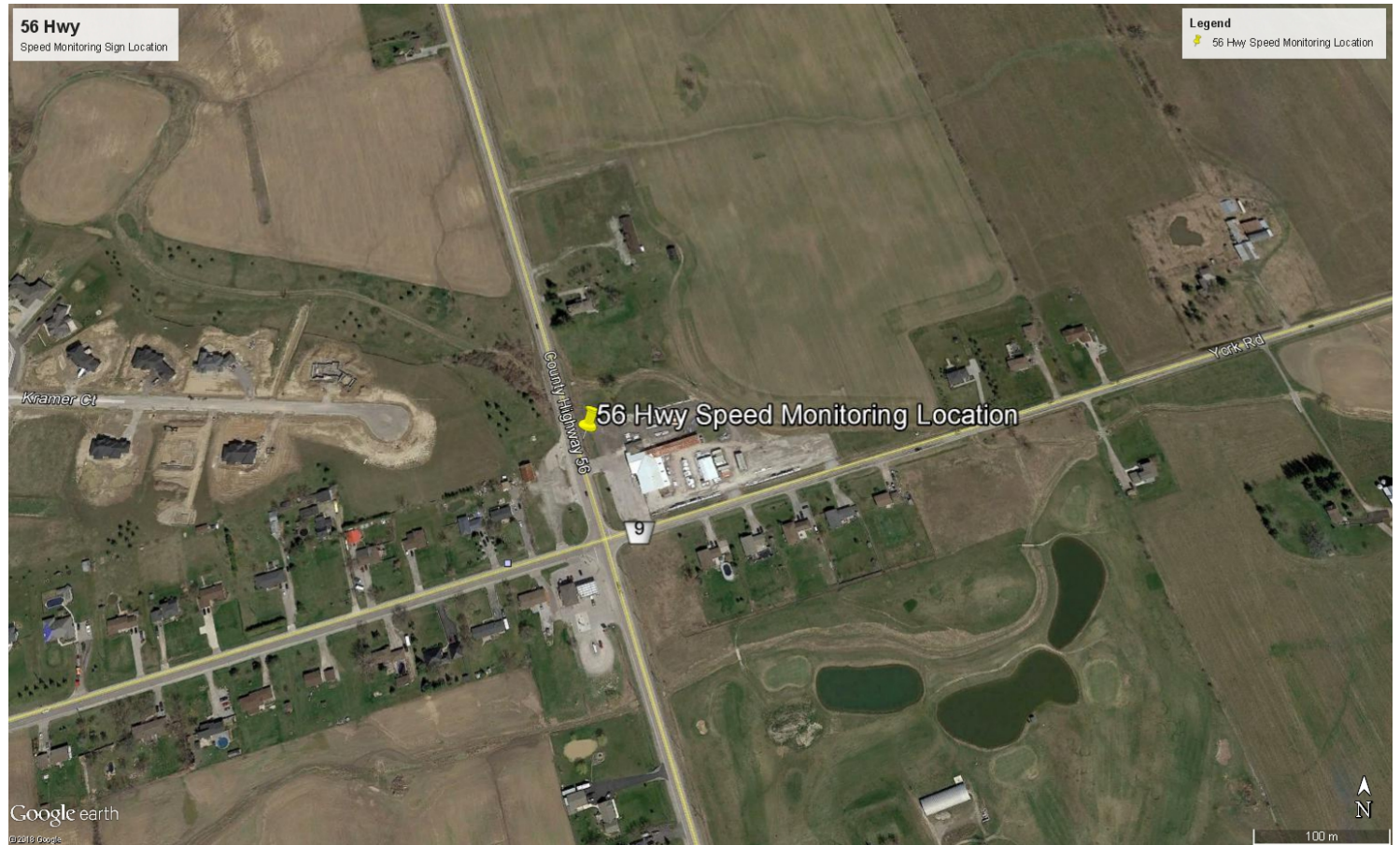
Cayuga Rural	
Street	Percentage of complaints
56 Hy at Road 9	46%
54 Hy at Indiana	14%
Canfield	14%
Road 9 at Gowland	7%
Windecker rd	7%
Conc 1 (900 Series)	4%
Junction Rd (600 Series)	4%
Conc 2 at Road 32	4%
Road 9 at Irvine	4%
Front St S at Mill St E	4%
Road 17 at Junction	4%
Road 17 at Road 32	4%

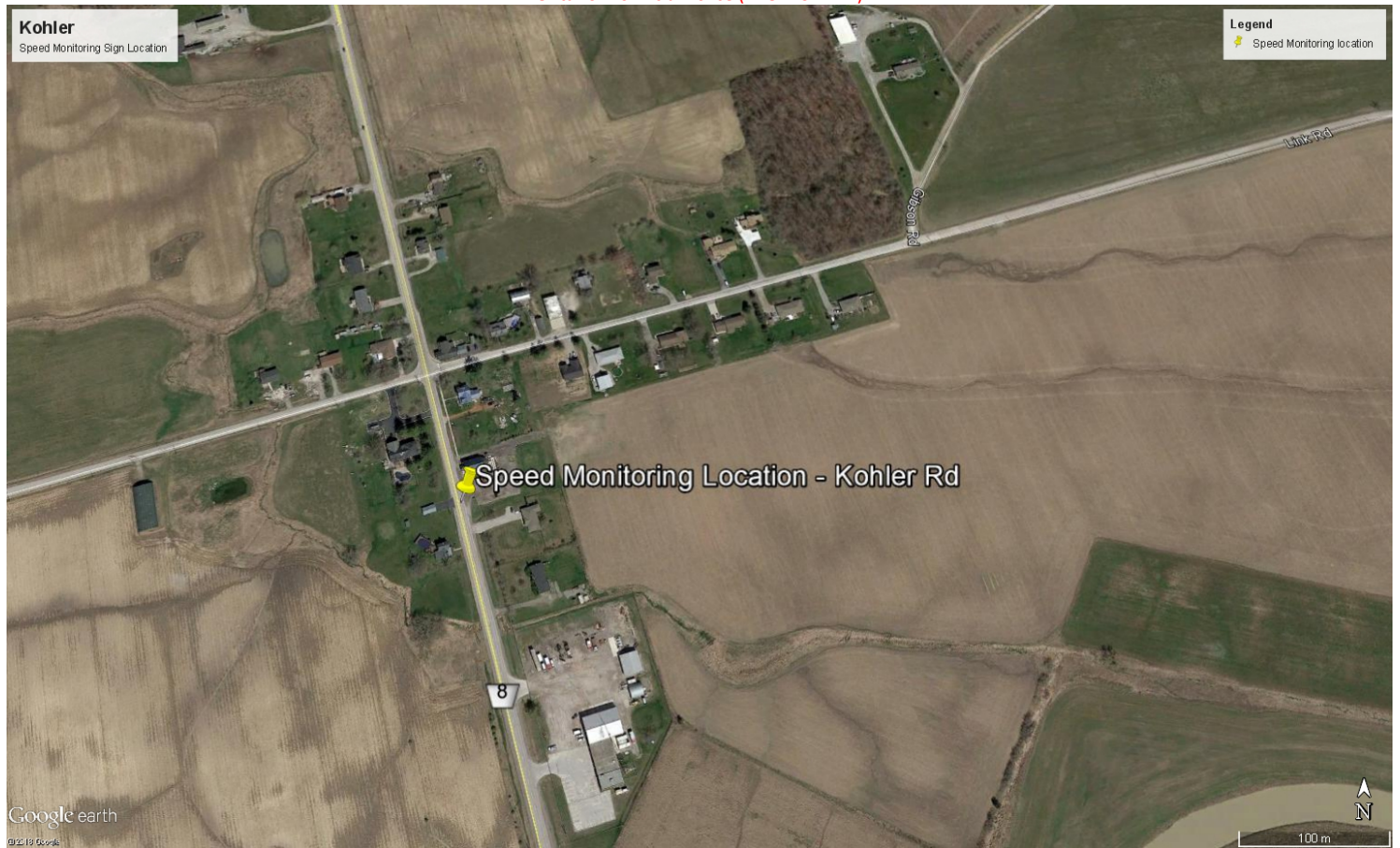
Recommendations

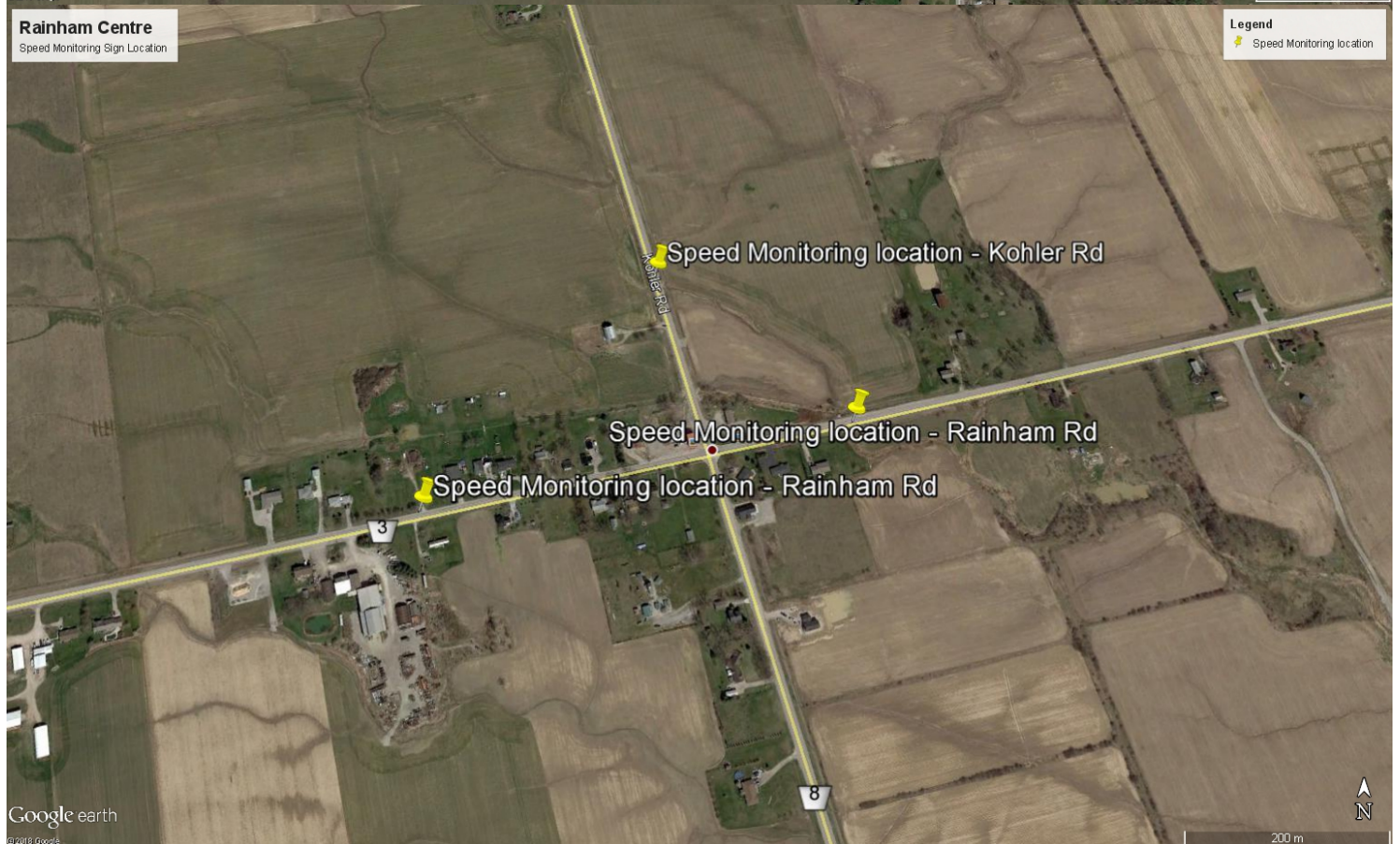
Speed monitoring sign placement requires 2 signs at each location facing in opposite directions to be efficient. Depending on sign type and power source requirements the deployment locations can vary. If solar powered units are deployed then the only issue that can arise will be space or secure placement locations. The maps provided below will be the most efficient for the initial sign placement.

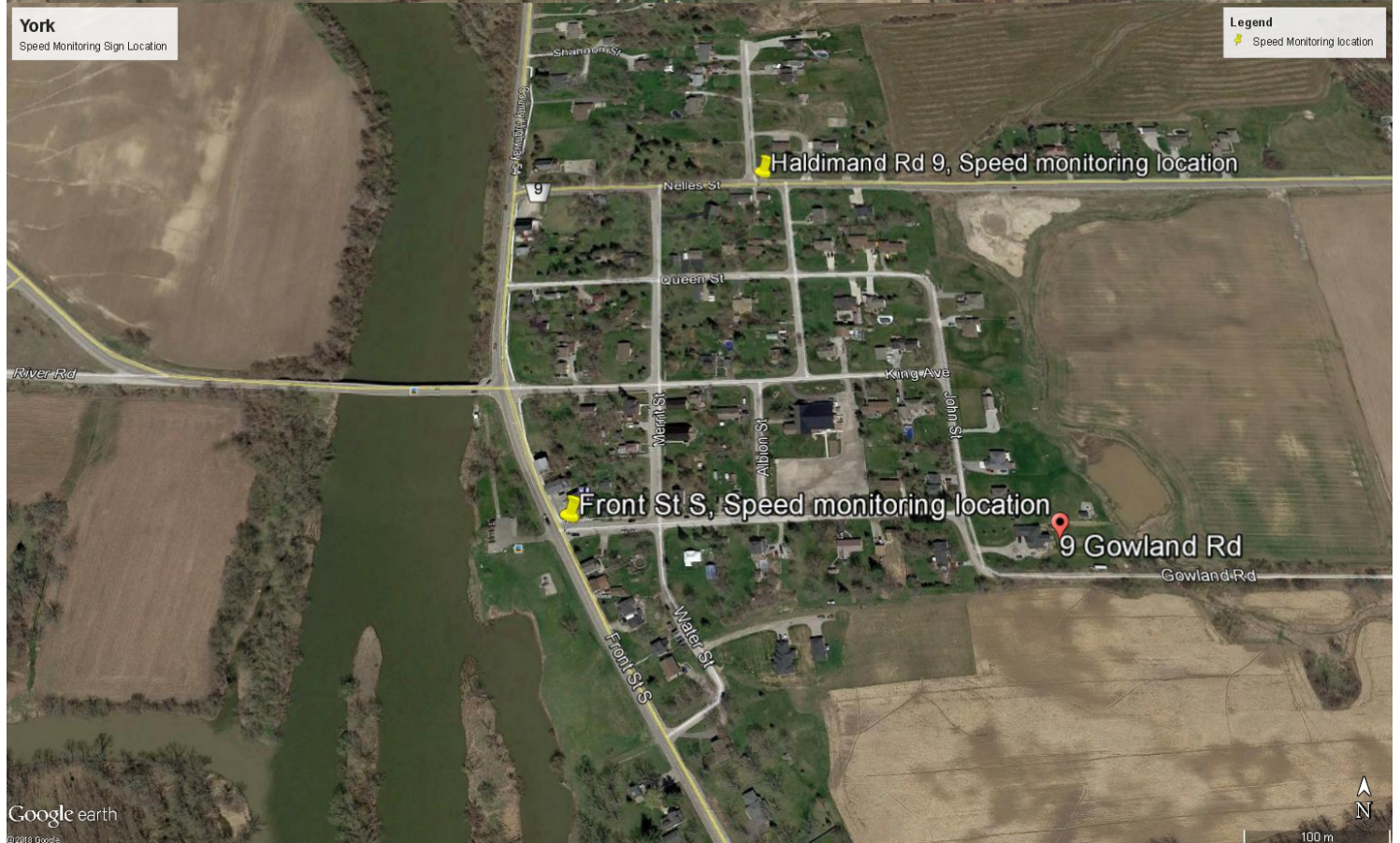
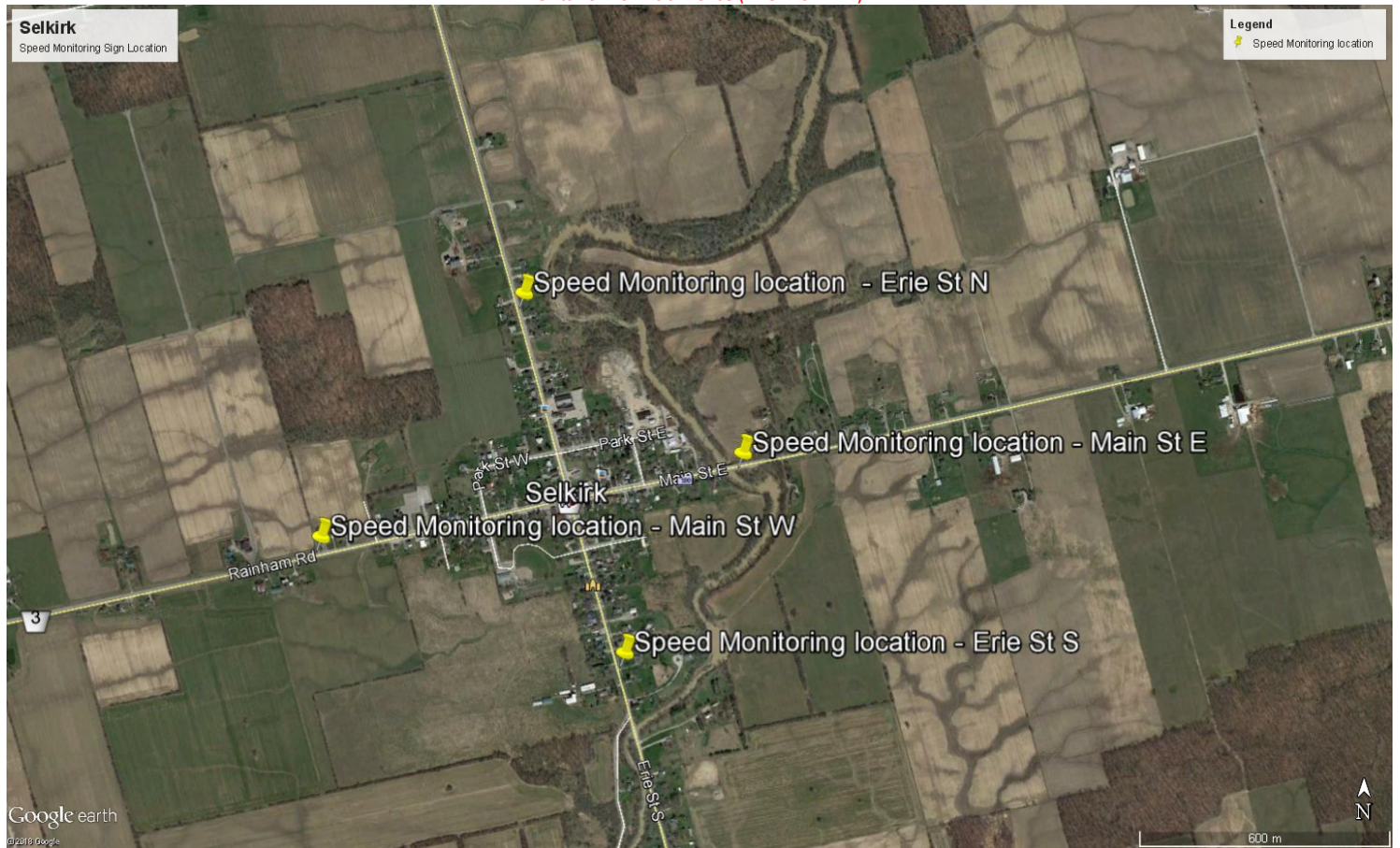


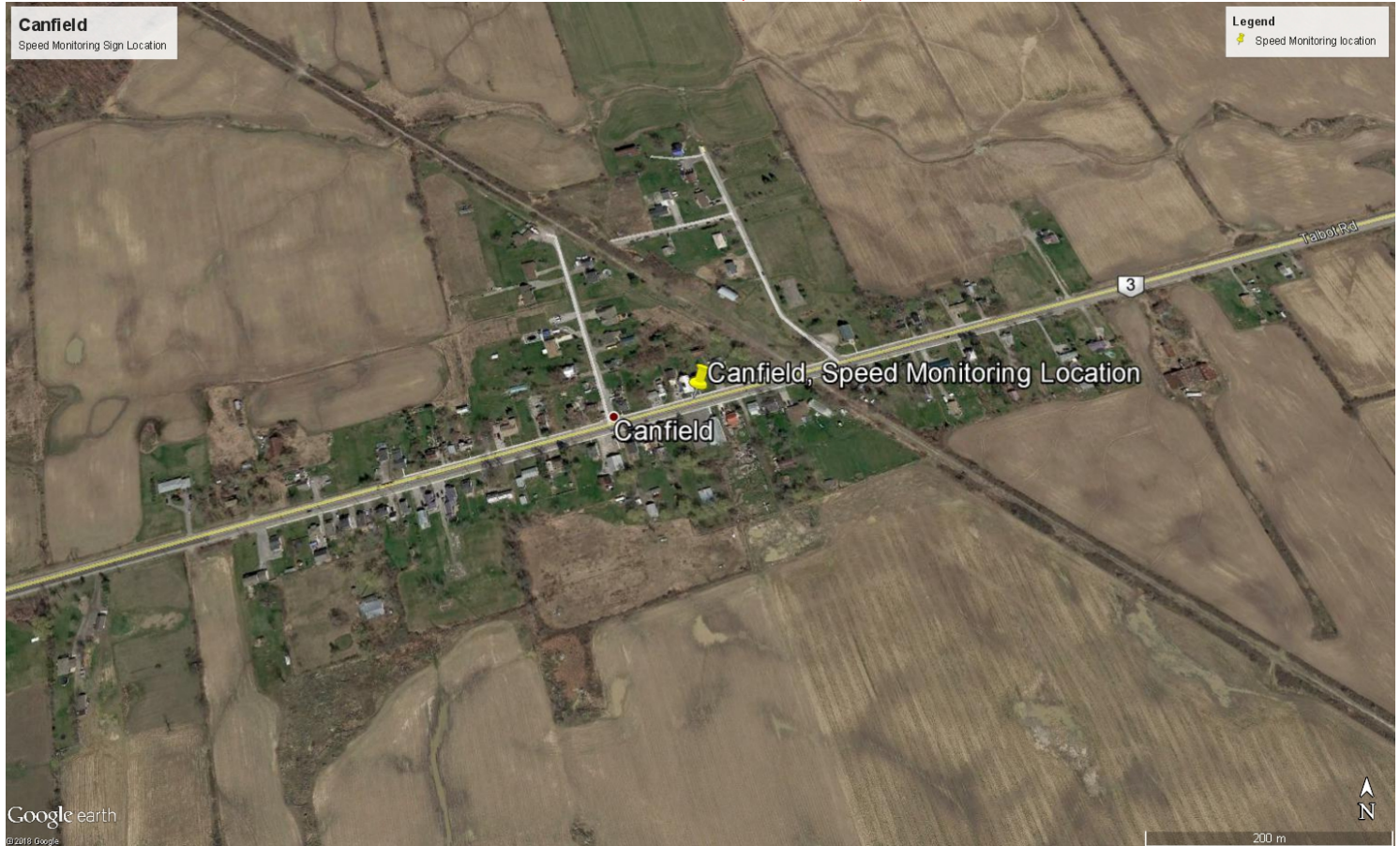
See the maps below for initial placement locations.











Analysis

Analytical Concerns/Limitations

The accuracy address data for the complaints is limited to officer input if the address is not exact in relation to the complaint the results for the area will appear skewed.

Conclusions

See recommendations

Sources

Niche RMS, ECRS database.

James Robins, Provincial Constable #13436
Haldimand County